

Closed Gloving



Disclaimer

A series of booklets has been developed by the Clinical Skills Lab team (staff, recent graduates and students) from the School of Veterinary Sciences, University of Bristol, UK. Please note:

- Each booklet illustrates one way to perform a skill and it is acknowledged that there are often other approaches. Before using the booklets students should check with their university or college whether the approach illustrated is acceptable in their context or whether an alternative method should be used.
- The booklets are made available in good faith and may be subject to changes.
- In using these booklets you must adopt safe working procedures and take your own risk assessments, checked by your university, college etc. The University of Bristol will not be liable for any loss or damage resulting from failure to adhere to such practices.

This work is under the Creative Commons Attribution-NonCommercial-NoDerivatives 4.0 International License.



© The University of Bristol, 2021



University of
BRISTOL

Year Group: BVSc3 +



Equipment for this station:

- Gown (you should already be wearing this)
- Gloves of correct size
- Hand measurement scale - for correct glove size
- An assistant – (an assistant would normally open the glove packaging for you)



Considerations for this station:

- We re-use gloves in the Clinical Skills Lab (CSL)
- Please re-pack the gloves (see 'Resetting the open gloving station' towards the end of this booklet)

Anyone working in the Clinical Skills Lab must read the 'CSL_I01 Induction' and agree to abide by the 'CSL_I00 House Rules' & 'CSL_I02 Lab Area Rules'

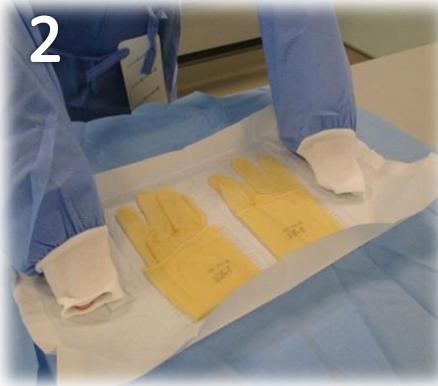
Please inform a member of staff if equipment is damaged or about to run out.



Clinical Skills: Closed Gloving



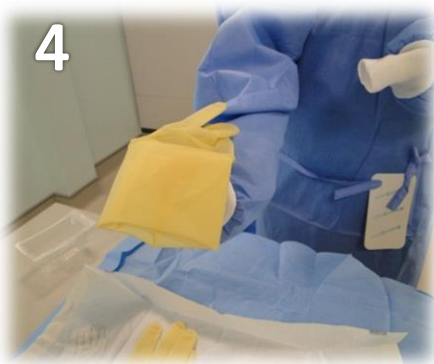
1
When closed gloving, keep your hands inside the gown cuffs before gloving. Ask an assistant to open the outer packet of the gloves. If you don't have an assistant then it is important to open the outer packet yourself without touching the contents before scrubbing up.



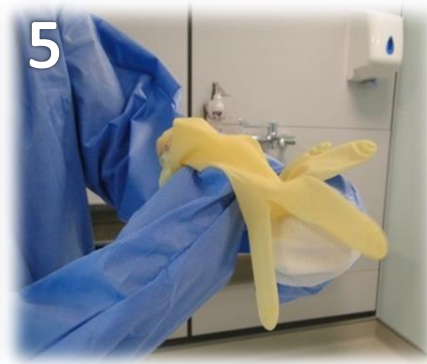
2
Spread the packet open onto a sterile surface and turn (ensure) the fingers are pointing down (towards you). Some glove edges may be stuck to the paper packet – it can be helpful to free the edges first.



3
Use your right hand to pick up the right glove : with the glove fingers pointing towards you, this will be the glove on the left of the packet. Hold the inner lining of the cuff.



4
Turn your hand over so that the glove is lying on top of your palm, with the thumb of the glove over the thumb of your hand.



5
Grasp the uppermost rim of the glove with the other covered hand and in one movement, pull the glove over the first hand.



6
Ensure the glove 'entrap' (completely covers) the cuff of the gown.



Clinical Skills: Closed Gloving



7
Work your fingers into the fingers of the glove.



8
Pick up the remaining glove by the rim with your other covered hand.



9
Turn the hand so the glove lies on your palm.



10
Pick up the uppermost rim of the glove with the other gloved hand.



11
In one movement, pull the glove over the second hand



12
Ensure the rim of the glove "entraps" (completely covers) the cuff of the gown. Adjust fingers and cuffs as necessary to ensure a snug fit.

How to stand –
hands up and
clapsed



Glove completely
covers cuff all the
way around

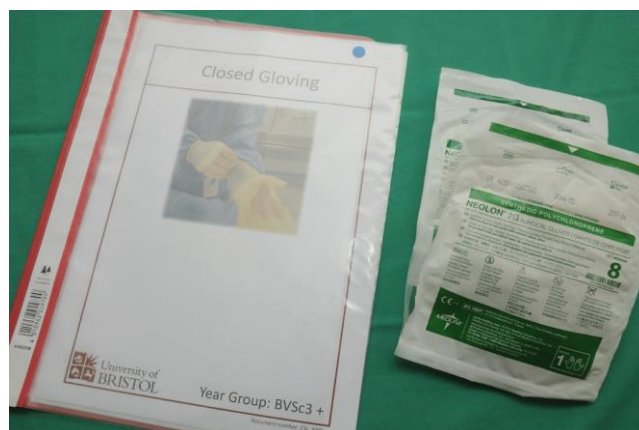


University of
BRISTOL

Resetting the station: Closed Gloving

1. In the Clinical Skills Lab gloves are reused so please take the gloves off carefully – so as not to tear them
2. Ensure all fingers are the right way out
3. Fold the cuffs up
4. Place the gloves on the paper wrapper with the fingers pointing AWAY from you
 - a) Thumb on 'top'
 - b) Right glove on right side
 - c) Left glove on left side
5. Fold the paper around the gloves

Station ready for the next person:



Please inform a member of staff if equipment is damaged or about to run out.



I wish I'd known: Closed Gloving

- It is helpful to have another unopened pack of gloves nearby, just in case one tears or becomes unsterile. That way the nurse won't have to leave the patient!
- Make sure you try out different sizes now, a half size bigger makes the gloves easier to put on, but surgery will be easier when wearing the snuggest fitting gloves that are comfortable.
- Your hands must not come out of the gown at any point before the gloves are put on!



- If practising at home a jumper with long sleeves (*that can be pulled down to cover your hands*) can be worn to represent the gown and to practise gloving and completely covering the gown cuffs.