

Inductive heating potential for energy efficient composites processing

J. Uzzell, L.R. Pickard,

I. Hamerton, D.S. Ivanov

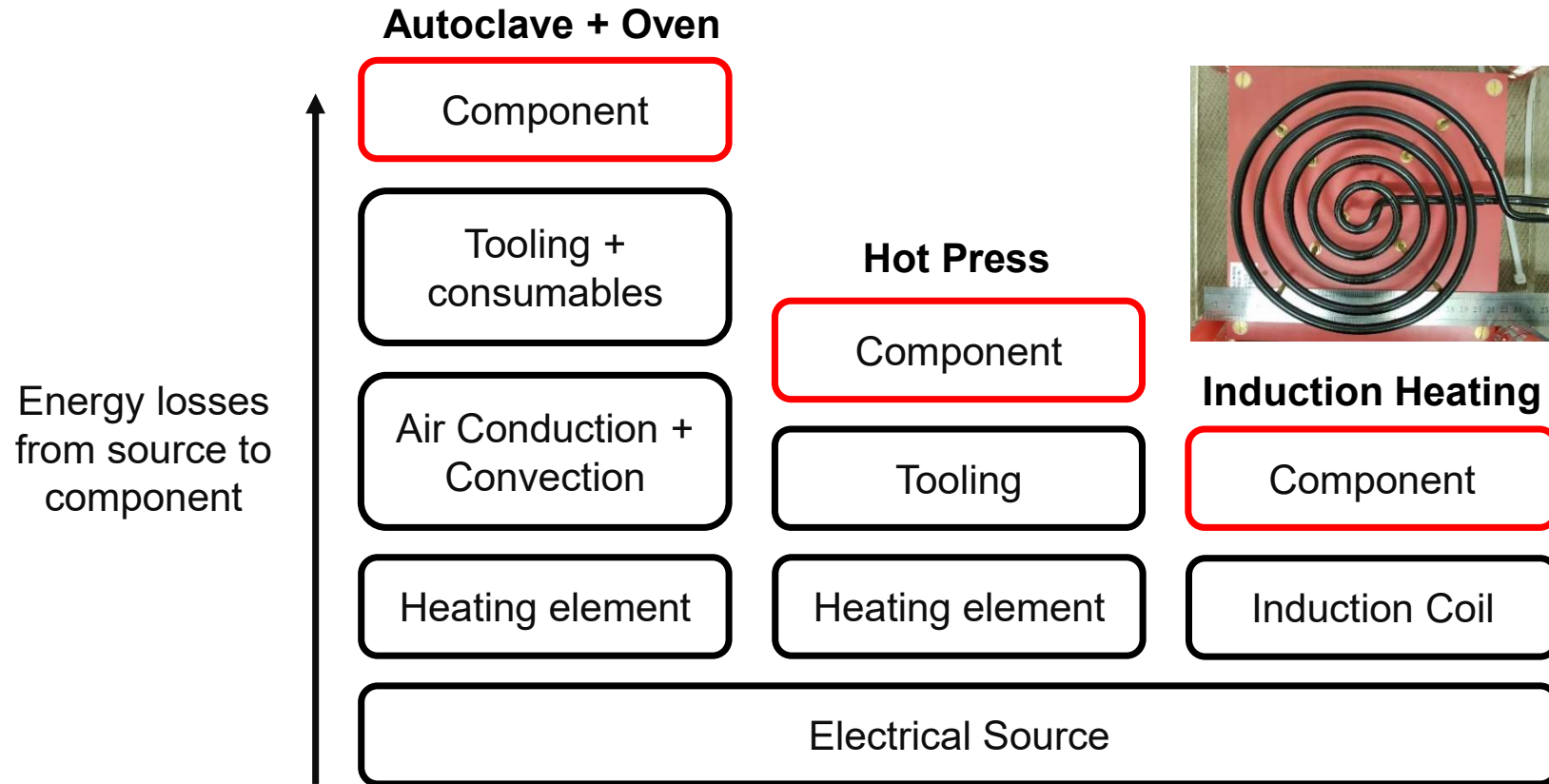
BCI Symposium

4th April 2023

bristol.ac.uk/composites

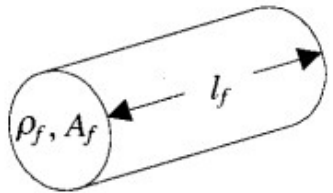


Energy efficient processing



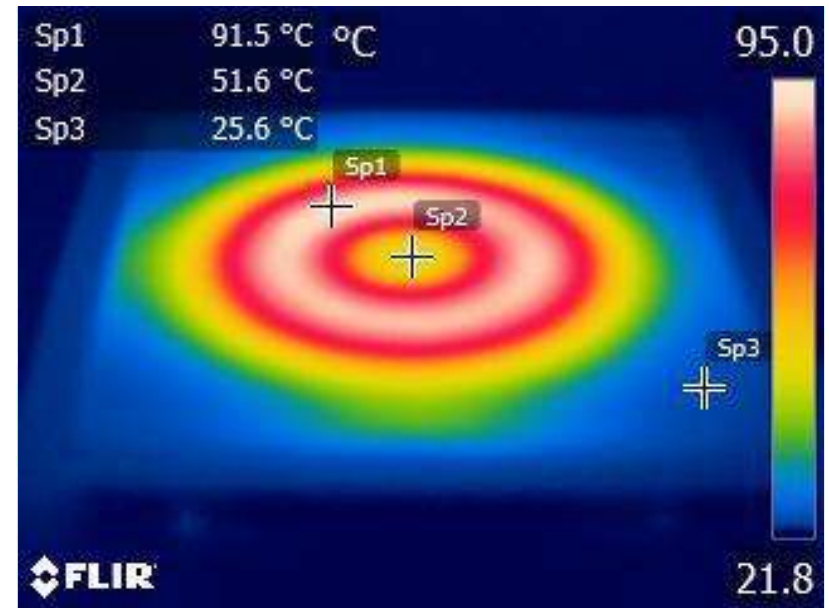
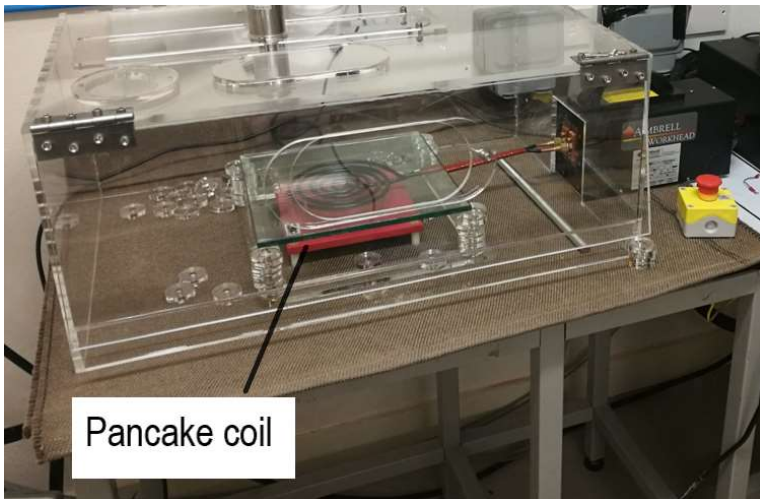
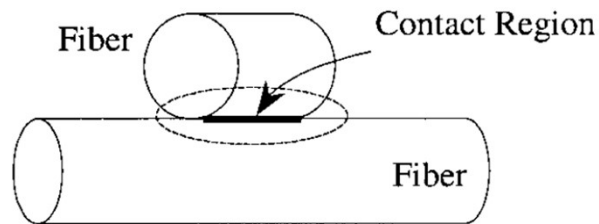
Induction heating

Joule Heating



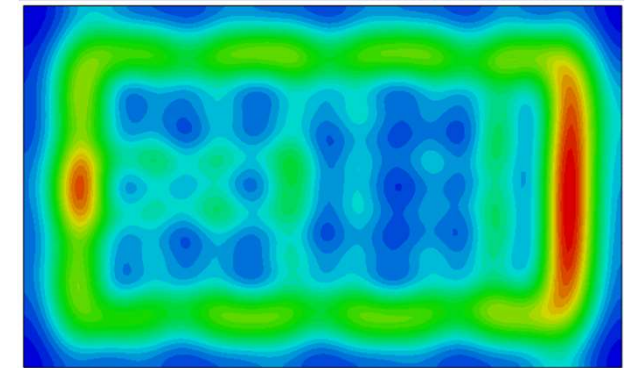
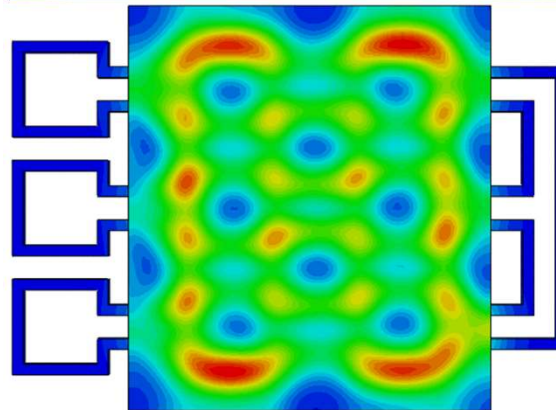
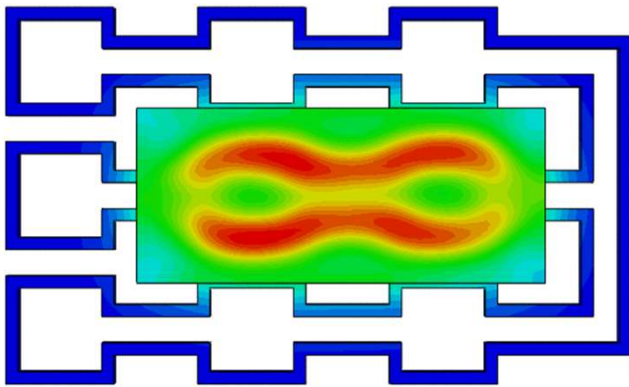
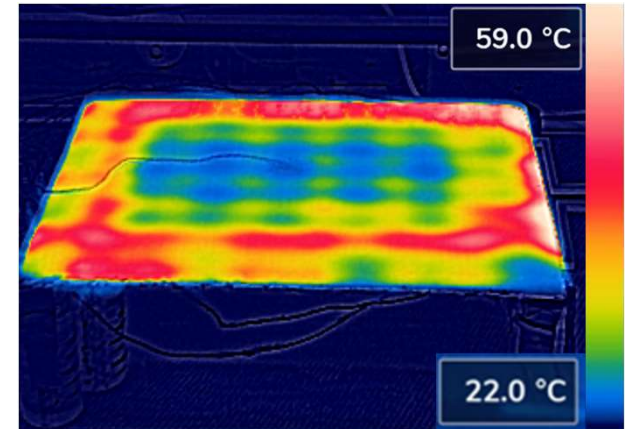
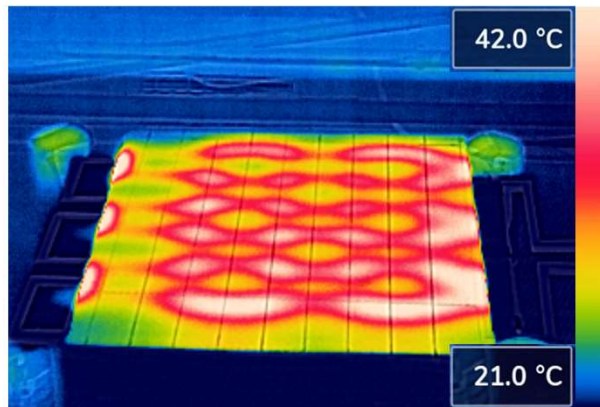
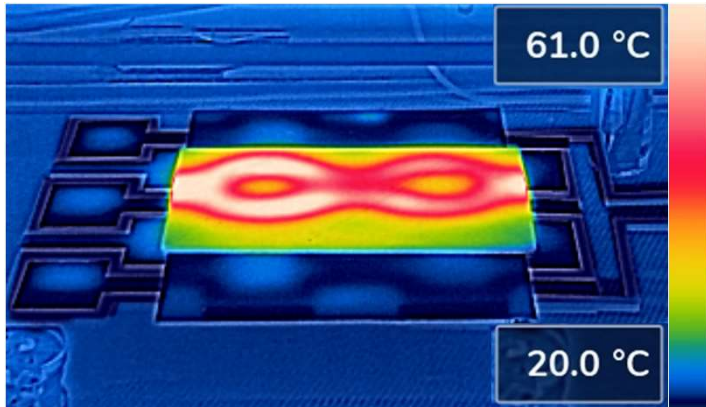
[1]

Contact resistance



QI Carbon fibre laminate heated for
18 seconds at 150 Amps and 3kW.
24C to 100C

Finite element model



Thank you for listening, any questions?

James.uzzell@bristol.ac.uk

bristol.ac.uk/composites

