

# **NPD User Group - Update**

**Richard Lumley**

**Department for Education**

**June 2015**



Department  
for Education

# Outline

- Background
- NPD Team
- NPD Process
- Legal framework
- Data Protection Principles Compliance
- Developments
- Questions



# Aims and Objectives

- Welcome you to this meeting
- Introduce the NPD team
- Briefly explain the work of the team
- Update you on some key developments, including
  - Data Protection Act legalities
  - Upcoming updates to the Application / User Guide
  - UK Data Service
- Welcome general feedback



# DfE collects and shares some of the best quality data across Whitehall

- DfE collects a large amount of data from schools and local authorities each year. We also collect qualifications level data from testing agencies and awarding bodies.
- A range of this data is published through numerous SFRs and websites like In Your Area and the Performance Tables – more data than ever before is being published on the performance tables.
- Not all this data can be shared so openly due to its sensitive nature. The National Pupil Database (NPD) contains a wide range of information about individual pupils and students in England.
- The Department supports better access to this data but must ensure release of data is lawful and complies with the Data Protection Act.



# NPD Data Sources

| Data Source   | 95/96 | 96/97 | 97/98 | 98/99 | 99/00 | 00/01 | 01/02 | 02/03 | 03/04 | 04/05 | 05/06 | 06/07 | 07/08 | 08/09 | 09/10 | 10/11 | 11/12 | 12/13 | 13/14 | 14/15 |
|---|-------|-------|-------|-------|-------|-------|-------|-------|-------|-------|-------|-------|-------|-------|-------|-------|-------|-------|-------|-------|
| School Census/PLASC <sup>1</sup>                      |       |       |       |       |       |       | ✓     | ✓     | ✓     | ✓     | ✓     | ✓     | ✓     | ✓     | ✓     | ✓     | ✓     | ✓     | ✓     | ✓     |
| Absence   |       |       |       |       |       |       |       |       |       |       | ✓     | ✓     | ✓     | ✓     | ✓     | ✓     | ✓     | ✓     | ✓     |       |
| Exclusions  |       |       |       |       |       |       | ✓     | ✓     | ✓     | ✓     | ✓     | ✓     | ✓     | ✓     | ✓     | ✓     | ✓     | ✓     |       |       |
| Pupil Referral Unit (PRU) Census <sup>11</sup>        |       |       |       |       |       |       |       |       |       |       |       |       |       |       | ✓     | ✓     | ✓     | ✓     |       |       |
| Early Years Census                                    |       |       |       |       |       |       |       |       |       |       |       |       | ✓     | ✓     | ✓     | ✓     | ✓     | ✓     | ✓     |       |
| Alternative Provision                                 |       |       |       |       |       |       |       |       |       |       |       |       | ✓     | ✓     | ✓     | ✓     | ✓     | ✓     | ✓     | ✓     |
| Early Years Foundation Stage Profile <sup>10</sup>    |       |       |       |       |       |       |       | ✓     | ✓     | ✓     | ✓     | ✓     | ✓     | ✓     | ✓     | ✓     | ✓     | ✓     | ✓     |       |
| Phonics*  |       |       |       |       |       |       |       |       |       |       |       |       |       |       |       |       | ✓     | ✓     | ✓     |       |
| Key Stage 1   |       |       | ✓     | ✓     | ✓     | ✓     | ✓     | ✓     | ✓     | ✓     | ✓     | ✓     | ✓     | ✓     | ✓     | ✓     | ✓     | ✓     | ✓     | ✓     |
| Key Stage 2   | ✓     | ✓     | ✓     | ✓     | ✓     | ✓     | ✓     | ✓     | ✓     | ✓     | ✓     | ✓     | ✓     | ✓     | ✓     | ✓     | ✓     | ✓     | ✓     | ✓     |
| Year 7 Progress Tests <sup>8</sup>                    |       |       |       |       |       | ✓     | ✓     | ✓     | ✓     | ✓     | ✓     | ✓     |       |       |       |       |       |       |       |       |
| Key Stage 3 <sup>7</sup>                              |       |       | ✓     | ✓     | ✓     | ✓     | ✓     | ✓     | ✓     | ✓     | ✓     | ✓     | ✓     | ✓     | ✓     | ✓     | ✓     | ✓     |       |       |
| Key Stage 4 Awarding Body data                        |       |       |       |       | ✓     | ✓     | ✓     | ✓     | ✓     | ✓     | ✓     | ✓     | ✓     | ✓     | ✓     | ✓     | ✓     | ✓     | ✓     | ✓     |
| Key Stage 4 Performance Tables (PT) data <sup>2</sup> |       |       |       |       |       |       | ✓     | ✓     | ✓     | ✓     | ✓     | ✓     | ✓     | ✓     | ✓     | ✓     | ✓     | ✓     | ✓     | ✓     |
| Key Stage 5 Awarding Body data                        |       |       |       |       | ✓     | ✓     | ✓     | ✓     | ✓     | ✓     | ✓     | ✓     | ✓     | ✓     | ✓     | ✓     | ✓     | ✓     | ✓     | ✓     |
| Key Stage 5 Performance Tables (PT) data <sup>3</sup> |       |       |       |       |       |       | ✓     | ✓     | ✓     | ✓     | ✓     | ✓     | ✓     | ✓     | ✓     | ✓     | ✓     | ✓     | ✓     | ✓     |
| Post-16 Learning Aims (PLAMS) <sup>4</sup>            |       |       |       |       |       |       |       |       |       |       |       | ✓     | ✓     | ✓     | ✓     | ✓     | ✓     | ✓     | ✓     | ✓     |
| Individualised Learner Record (ILR) <sup>6</sup>      |       |       |       |       | ✓     | ✓     | ✓     | ✓     | ✓     | ✓     | ✓     | ✓     | ✓     | ✓     | ✓     | ✓     | ✓     | ✓     | ✓     | ✓     |
| NISVQ data <sup>5</sup>                               |       |       |       |       | ✓     | ✓     | ✓     | ✓     | ✓     | ✓     | ✓     | ✓     | ✓     | ✓     | ✓     | ✓     |       |       |       |       |
| Overall Level 2/3 indicators*                         |       |       |       |       | ✓     | ✓     | ✓     | ✓     | ✓     | ✓     | ✓     | ✓     | ✓     | ✓     | ✓     | ✓     | ✓     | ✓     | ✓     | ✓     |
| HESA data   |       |       |       |       |       |       |       |       |       | ✓     | ✓     | ✓     | ✓     | ✓     | ✓     | ✓     | ✓     | ✓     | ✓     | ✓     |
| Children Looked After <sup>9</sup>                    |       |       |       |       |       |       |       |       |       |       | ✓     | ✓     | ✓     | ✓     | ✓     | ✓     | ✓     | ✓     | ✓     | ✓     |
| Children In Need <sup>9</sup>                         |       |       |       |       |       |       |       |       |       |       |       |       |       | ✓     | ✓     | ✓     | ✓     | ✓     | ✓     | ✓     |
| National Client Caseload Information (NCCIS)          |       |       |       |       |       |       |       |       |       |       |       |       |       |       |       | ✓     | ✓     | ✓     | ✓     |       |
| Independent Specialist Providers (ISP) <sup>12</sup>  |       |       |       |       |       |       |       |       |       |       |       |       |       |       | ✓     | ✓     | ✓     | ✓     |       |       |



# Use of NPD Data

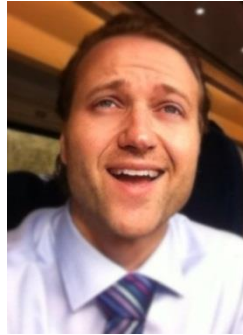
**There has been a greater use of our data by the market:**

- We are responsible for maintaining the NPD and process almost 400 adhoc data requests as well as maintaining regular data releases. Making sure that the release of data is lawful and compliant with the Data Protection Act.
- We have seen increases in adhoc data requests of 13.4% in 2014-15 and 15% in 2013-14 compared to the previous years.
- 86% of requests processed within target time in the last 12 months.
- List of requestors published.

Increasing demand



# NPD Team



Richard Lumley



Chris Douglass



Martin Johnson



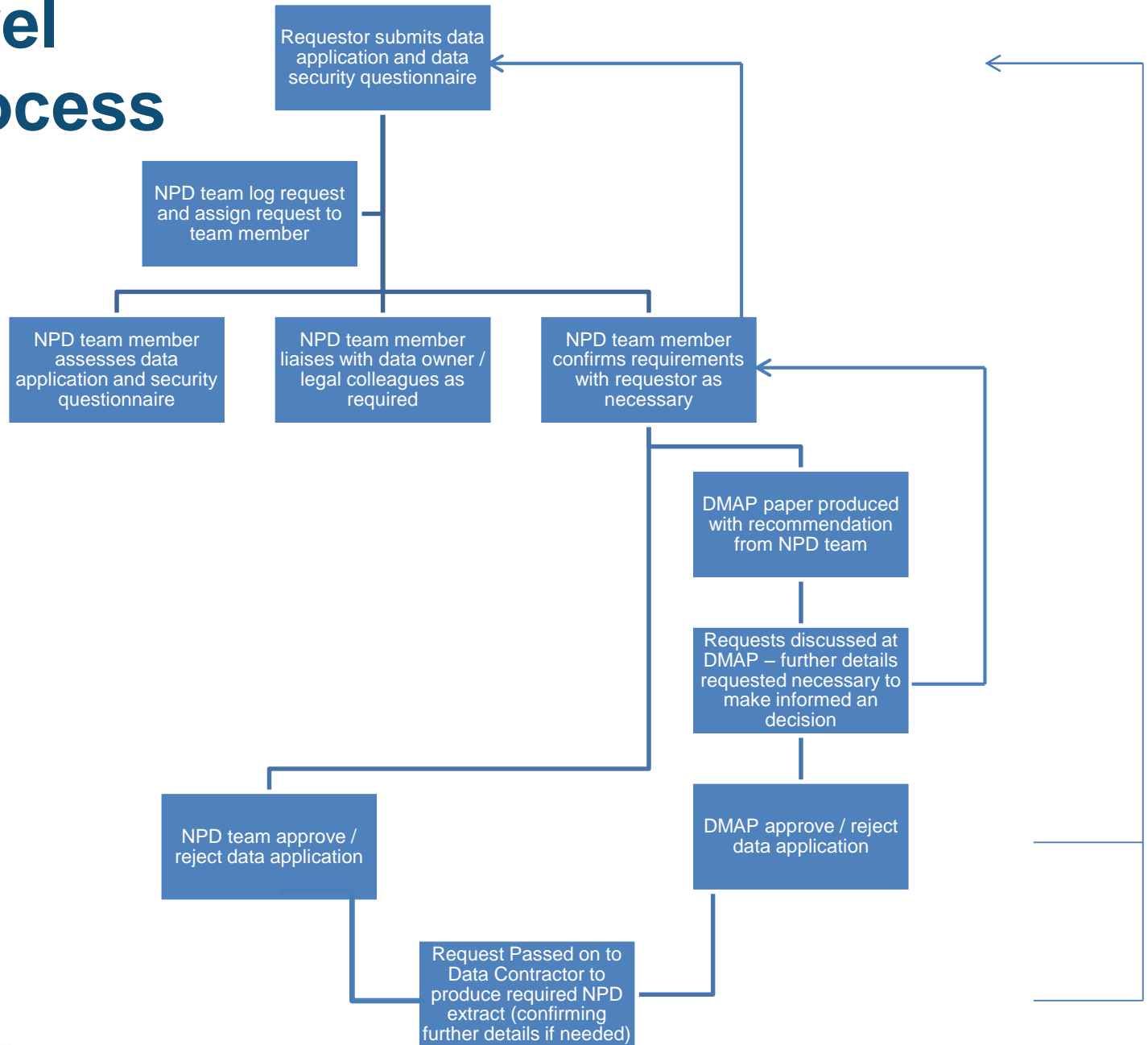
Debbie Bovenizer



Richard Garbitz



# High level NPD Process





# Linked data service:

- We now have in place a service which enables access to linked (DfE, FE and HE) education data.
  - We have worked closely with officials from SFA, BIS, HESA and HEFCE to find a way within existing legislation to enable third parties to apply for access to linked education data.
  - After comprehensive consultation with lawyers from each organisation, an acceptable way forward was found and this new service was launched in December 2013.
  - Interested parties can apply for data extracts of linked data (data from the NPD, individualised learner record and HESA student record). Previously this would have required three separate requests to each organisation and the third party would have to do the linking.
- Note HESA is a charity and charges are incurred for the HESA element of the Linked data



# Legal Framework

- The DfE [website](#) sets out what data we hold and the uses made of it by DfE and its partners. Schools also inform parents and pupils of how the data is used through [privacy notices](#).
- We will only disclose pupils' and/or children's personal information where legislation allows it to do so, and it is in compliance with the [Data Protection Act 1998](#).
- There is specific legislation which allows the department to share individual pupil data from the NPD with persons named in the [Education \(Individual Pupil Information\) \(Prescribed Persons\) \(England\) Regulations 2009 \(Amended\)](#).
- This includes persons who, for the purpose of promoting the education or well-being of children in England are conducting research or analysis.



# Data Protection Act Compliance

- When sharing any data we must be satisfied that the sharing is compliant with the data protection principles. This means it should be fair and lawful, that one of the conditions in Schedule 2 to the DPA 1998 is met, and, if sharing sensitive personal data, one of the conditions in Schedule 3 is met.
- As Data Controller it is the responsibility of DfE to ensure that the requestor is able to process the data fairly and lawfully, which will mean satisfying us that they can comply with the DPP.
- In the revised application form we are asking for full details of how you believe these conditions are satisfied but are not asking to see evidence of this.



# How we have improved data access:

- Amended legislation to give NPD access for a wider range of purposes. This now includes an increased number of named bodies and has expanded the research uses to now support the education or wellbeing of children in England.
- Streamlined the NPD application process making it easier for applicants and to improve response times:
  - Shorter applications
  - Improved guidance
  - Tiered system
- (This is a necessary process)
- UK Data Archive



# Proposed Application Form Changes

- Sharing contact details
- Identification of previous NPD data requests
- Identification of reuse requests vs new data
- Formatting to include tables etc
- Identification of linking requirements
- Short summary of request for website
- Data format requirements
- Confirmation of compliance with data protection principles
- Data Retention follow up



# Any Questions?



# For more information

## Contact us

- NPD Queries: [NPD.REQUESTS@education.gsi.gov.uk](mailto:NPD.REQUESTS@education.gsi.gov.uk)

## Visit the NPD website

- [www.gov.uk/national-pupil-database-apply-for-a-data-extract](http://www.gov.uk/national-pupil-database-apply-for-a-data-extract)

