

CENTRE FOR
STUDY ABROAD

STUDY ABROAD AT BRISTOL 2025/26



University of
BRISTOL

8TH

Bristol is the 8th largest city in the UK*, located in the south-west of England just 90 minutes from London.



Find out more
bristol.ac.uk/study-abroad

* When defined by Primary Urban Area, centreforcities.org 2023



WELCOME TO BRISTOL

CONTENTS

- 02 The University of Bristol
- 04 Study Abroad programmes
- 05 What you can study
- 06 A welcoming city
- 08 Life in Bristol
- 10 Student experience
- 12 Accommodation
- 15 Fees and funding
- 16 How to apply

STUDY DATES

Autumn semester
 September 2025 – December 2025

Spring semester
 January 2026 – May 2026

Full academic year
 September 2025 – May 2026

The dates above are indicative and the exact dates will be released on our website. bristol.ac.uk/study-abroad-dates



TOP ACADEMIC STATUS

The University of Bristol is one of the most popular and highly ranked universities in the UK, with a diverse community of over 30,000 talented students from more than 140 countries.

Here, you will experience outstanding teaching shaped by our cutting-edge research, and learn from academics at the forefront of their fields.

Living and studying at the heart of Bristol, one of Europe's most exciting, creative cities, you will find a world of opportunities right outside the lecture theatre.



Watch our Study Abroad film. bristol.ac.uk/study-abroad-apply

Welcome to the University of Bristol's outstanding Study Abroad experience.

The Centre for Study Abroad (CfSA) is home to all our short-term study programmes, both here in Bristol and abroad. Our centre also has a dedicated Academic Director overseeing a range of Bristol-inspired study pathways linked to our world-class research.

Beyond the University's outstanding facilities and reputation, the CfSA provides a caring environment where both your academic and personal ambitions are nurtured. You will enjoy excellent study support – both one-to-one and with your classmates. We offer tailored academic workshops and career guidance, alongside social and cultural events, to equip you with the necessary skills to thrive during your Study Abroad experience.

For academic excellence, meaningful support and an authentic UK cultural experience, get ready for a warm Bristol welcome.



THE UNIVERSITY OF BRISTOL



'I admire the love and dedication that the team puts into events for Study Abroad students. They make me feel welcome and help me to meet people.'

Mariana
Universidad Nacional Autónoma de México



9TH
IN THE UK
QS World University
Rankings 2025

45TH
MOST INTERNATIONAL
UNIVERSITY IN
THE WORLD
Times Higher Education 2023

5TH
IN THE
UK FOR
RESEARCH
THE analysis of REF 2021

STUDY ABROAD PROGRAMMES



EXPANDING YOUR HORIZONS

Bristol offers a highly flexible Study Abroad experience, with different programmes to suit your English language ability and a wide range of academic areas. Our programmes are available for a single semester or a full academic year.

If you are applying to Bristol as an exchange student, you can check with your home university or the Centre for Study Abroad team at Bristol to find out which programme you have been nominated to. Direct-enrol students and independent applicants should apply to our General pathway programme.

Study Abroad (General pathway) September and January start

You can choose units from across the University to create a personalised academic programme. You can take units in your major and minor, as well as other subjects that interest you.

Study Abroad (Subject pathway) September and January start

You will be nominated by your home university to a department at Bristol that best matches your current degree programme. You will take the majority of your units in your host department, with the option to take a small number of credits in other academic areas of interest.

STABEL (Study Abroad with English Language) September start

For students who don't currently meet the English language requirements for the General pathway or Subject pathway, STABEL combines Study Abroad with a pre-sessional English language course over the summer. This intensive course can last from six to ten weeks, depending on your current English language level, and is designed to help you reach the required level to progress onto one of the programmes above in September.

For details on entry requirements and how to apply, see page 16.



'I have enjoyed the teaching as the lecturers are always ready to support students, the teaching is research-informed and the course content has enabled me to be a critical thinker. The support from teaching staff and students has been amazing.'

Faith
Università degli Studi di Siena

WHAT YOU CAN STUDY

We recognise that every student is unique, with different passions, aspirations and ways of studying. Our faculties offer a wide variety of subjects, which can be combined to create a diverse and intellectually stimulating programme.

Visit bristol.ac.uk/study-abroad-guidance to explore your subject options, read our subject study guides and find out how to select units as part of our Study Abroad programmes.

We offer the following subject areas:

- ARTS
- ENGINEERING
- HUMANITIES
- SCIENCE
- LIFE SCIENCES
- SOCIAL SCIENCES

STUDY THEMES

For General pathway students who would like to connect their unit choices through a broader topic, our Bristol-inspired study themes enable you to explore a common subject from multiple academic perspectives. Our study themes span a range of areas including film and literature, history, science and more.

- Global Citizen: The British Experience
- The World We Live In: Environment and Sustainability
- Social Justice and Activism

View our study guides and themes
bristol.ac.uk/study-abroad-units



BEAUTIFUL BRILLIANT BRISTOL

A WELCOMING CITY

Make the next chapter of your studies an unforgettable cultural adventure in Bristol – a diverse, exciting place that will quickly feel like home.

At the heart of the city

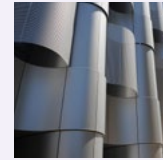
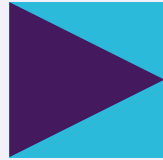
Our campus is located in the centre of Bristol and offers outstanding facilities, including state-of-the-art teaching spaces, 8 libraries, various study centres, and sports and fitness venues.

A short walk from campus will take you into the heart of the city centre. Named as one of the best places to live in the UK by the *Sunday Times* in 2023, Bristol has a dynamic cultural scene as well as an abundance of green spaces and natural beauty.

Our favourite spots include:

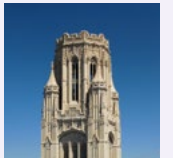
- **Brandon Hill:** Cabot Tower sits at the top of Brandon Hill. There are great views from the top overlooking this green haven, close to our main campus.
- **Clifton Suspension Bridge:** Designed by Isambard Kingdom Brunel, the iconic Clifton Suspension Bridge overlooks the river Avon, linking Bristol to North Somerset.
- **Harbourside:** Bristol's Harbourside bustles with lively bars, restaurants, museums and attractions, and is a focal point for festivals and markets all year round.

The beautiful British countryside and coast are easy to reach by bus, bike or car. And with London only 90 minutes away – and Europe an hour by plane – you'll have endless opportunities to explore further.



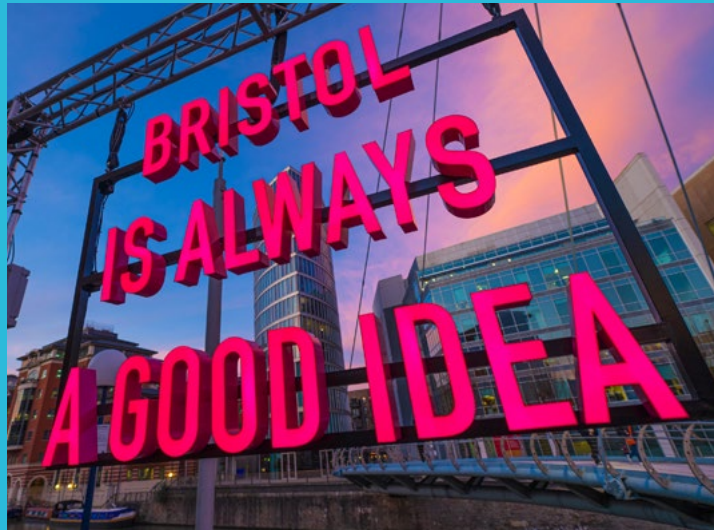
'I found Bristol a vibrant and multicultural city, full of young energy and students from all around the world.'

Carla
Universidad Nacional de Córdoba



Olivia Brothridge

EMBRACE LIFE IN BRISTOL



400+
PARKS AND GREEN SPACES



1ST
VOTED BEST PLACE TO VISIT IN THE UK
Time Out (2024)

AN AUTHENTIC BRITISH EXPERIENCE

Experience something different in Bristol. History and creativity surround you, from Brunel's Suspension Bridge to Banksy's murals. It's also one of the UK's most vibrant cities, where you'll be pulled into the excitement of an iconic music scene, famous festivals and beautiful parks.



185
COUNTRIES REPRESENTED IN THE CITY OF BRISTOL'S COMMUNITY



Find more images of student life in our city @bristoluni_studyabroad

AN ENRICHING STUDENT EXPERIENCE

HOW WE SUPPORT YOU

Centre for Study Abroad team

The Centre for Study Abroad provides a caring environment, with exceptional support to nurture both your academic and personal ambitions. From your initial enquiry to generating your transcript when you have completed your studies, we support you throughout your whole journey. We are here to help you with any concerns you have, academic or personal. We also have a student-facing space on campus so you can drop in at any time without making an appointment.

We want to ensure you have an unforgettable UK experience. That's why our dedicated Student Experience team offers a diverse range of events and activities throughout the year that will support your academic, personal and professional growth. Whether it's theatre outings, sports events, visits to local markets, or fun evening socials, you'll have plenty of opportunities to immerse yourself in the vibrant culture of Bristol.

We know you're not just here for great experiences – you also need valuable career preparation. Whatever your ambitions, the Centre for Study Abroad can boost your prospects with the right workshops and access to the Bristol PLUS Award programme – endorsed by leading UK employers.

'I made friends for life at the Study Abroad welcome events! It was these people that made my time here the happiest it could have been, and I have the University to thank for that.'

Artur
Universidade de São Paulo



With our outstanding facilities, active Students' Union and extensive support network, at Bristol you can enjoy the best of student life.

Global Lounge

The Global Lounge is a multicultural hub that celebrates all cultures. On arrival, the team will help you meet other students and make you feel more at home by introducing you to the city and surrounding areas. Situated in the heart of campus, the Global Lounge is a place for all Study Abroad students, as well as other international and UK students, to connect and learn from each other. It has a communal atmosphere, encouraged through a variety of fun and social events, such as a weekly Language Café. bristol.ac.uk/global-lounge

Get involved

Every student at the University of Bristol is a member of Bristol Students' Union (SU). Led by students, for students, Bristol SU is a vital part of our world-class university experience.

Bristol SU organises events, represents your views, and runs more than 350 student groups for different interests and hobbies. Joining a student group is a great way to meet new people while you are here, and Study Abroad students often say taking part really helps them settle in and make friends.



Find out more
bristol.ac.uk/study-abroad-life

Sport, exercise and health

With first-class sport and fitness facilities both on campus and in the leafy suburbs of Coombe Dingle, there are plenty of opportunities to start or maintain a healthy and active lifestyle during your time at Bristol.

Our memberships give you access to our gym, fitness classes, studios and swimming pool. You can also play sport socially or competitively by joining one of 70 student sport clubs. bristol.ac.uk/sport

Health and wellbeing

Bristol's holistic approach to wellbeing will support you to realise your full potential. Our comprehensive network of resources and student services is ready to support you if and when you need it.

- Our Student Wellbeing and Residential Life teams are friendly and approachable, providing advice and coordinating the right support for you.
- The Student Counselling Service provides confidential, high-quality short-term counselling for individuals or small groups.
- The Disability Services team provides students with confidential information and advice on support available at the University.
- We have a full NHS (National Health Service) doctor's surgery on campus for students who live in the local area.
- The Multifaith Chaplaincy provides one-to-one pastoral and spiritual support to students and staff of all faiths and none.



FEEL PART OF A CARING COMMUNITY

ACCOMMODATION

Our accommodation is a safe and supportive environment where you can be part of our friendly student community.

Your accommodation

We offer self-catered and catered accommodation with a range of options to choose from. All rooms are furnished, with either an en suite or a shared bathroom, and every residence provides free internet and 24-hour security.

You will be living with a mix of British undergraduates, international students, and other Study Abroad students.

Support in your accommodation

Our Residential Life team offers a support network for students living in University accommodation, and can provide expert help, support and advice 24 hours a day, seven days a week.

Private rented accommodation

Private rented accommodation is best suited to students coming to Bristol for the full academic year, as most rental contracts are for a minimum of nine months. You can find useful advice and guidance about finding private rented accommodation on the Student Accommodation website.

bristol.ac.uk/accommodation/privately-rented

Bristol SU Lettings is a specialist letting service managed by Bristol Students' Union. They offer a range of private accommodation options for individuals or groups.

Social life and sports

Each University residence has a social committee run by students, which organises a range of social events, fun activities and sporting leagues, for all abilities. Students living in University accommodation can also get fit for free through the fantastic B:Active Residences programme.



'I have met new people through my University accommodation. Having new flatmates has allowed me to introduce myself.'

Felipe
Pontificia Universidad Católica de Chile



Accommodation fees vary, but the information below will give you a good idea of cost.

Typical accommodation fees

Total cost per semester

Self-catered	Cost range
Twin (shared) room	£1,656 to £2,646
Single room	£1,902 to £4,891
En suite room	£2,844 to £5,520
Catered	Cost range
Twin (shared) room	£2,600 to £4,179
Single room	£2,890 to £5,320
En suite room	£3,629 to £5,958

Typical accommodation fees based on 2024/25 figures for University allocated accommodation and may vary depending on semester. Figures rounded to the nearest pound.

Accommodation fees include all gas, electricity and water costs, internet, bus pass for the U1 Unibus, insurance, and a Social Fund contribution.

Private rents vary according to your preferences. For a room in a shared residential property, you could pay between £500 and £800 or more in monthly rent, not including your bills.

Studios in commercial properties can be up to £1,500 per month, although this does include bills and internet.

Study Abroad accommodation guarantee

- Direct-enrol (non-exchange) students for September or January entry are guaranteed an offer of a place in University accommodation if you apply by the deadline.
- Exchange students from institutions outside of Europe are guaranteed an offer for September entry, if you apply by the deadline. We cannot guarantee an offer for January-entry students, but we aim to place as many students as possible in a University residence or support you in finding private accommodation.
- Exchange students from our European partners are not guaranteed an offer for September or January entry but are still welcome to apply. If we cannot provide a place in a University residence we will support you in finding private accommodation.

Find the right housing for you
bristol.ac.uk/accommodation



A VIBRANT INTERNATIONAL NETWORK

‘The things I love the most about Bristol are the people. The Study Abroad community is brilliant. It’s wide, expansive and very international. It was fun for me to meet so many different people on so many different tracks of life.’

Joy
Occidental College



FEES AND FUNDING

Tuition fees

If you are nominated to Bristol through an exchange partnership you will not need to pay tuition fees. Students who apply independently or as a direct-enrol applicant will pay Study Abroad tuition fees. If you are unsure which category applies to you, please speak to your home university for further guidance.

2025/26 Study Abroad tuition fees

- Full year: £21,700
- One semester: £11,160

Study Abroad with English Language (STABEL)

- Six weeks: £3,510 + Study Abroad tuition fee
- Ten weeks: £5,740 + Study Abroad tuition fee

Tuition fees will be paid once you arrive, and full-year students can pay in instalments. You should check with your home Study Abroad office and/or programme provider regarding the payment of fees to the University of Bristol. Your home institution may have a special agreement with us to pay the fees on your behalf.

Study Abroad students are often able to apply for scholarships at their home university or in their home country to support their programme costs when they go abroad to study. We encourage you to speak to your home university to find out what scholarships might be available.

Living costs

If you are interested in learning about typical living costs in Bristol, please see our website for more information. bristol.ac.uk/living-expenses

Find out more
bristol.ac.uk/study-abroad-fees



HOW TO APPLY

OUR REQUIREMENTS

Academic requirements

You must meet all of these conditions:

- You are currently enrolled in a higher education institution and studying towards a bachelor's degree.
- You will have completed at least one year of study at university level at the time of your application. If you are studying towards a four-year bachelor's degree, we strongly recommend that you have completed at least two years of study.
- You will have a strong 'B' average or 3.0 Grade Point Average (GPA) on a 4.0 scale.

English language requirements

You must meet one of the following conditions:

- English is your native language.
- English is the language you are taught in at your home university. If you think this applies to you, please contact cfsa-inbound@bristol.ac.uk to confirm whether you need to provide any additional evidence as part of your application.
- You can provide proof that you meet the English language requirements for your Study Abroad programme. The full list of requirements and accepted English language certificates is available on our website. bristol.ac.uk/study-abroad-requirements

Visa information

If you do not hold a UK/Irish passport and will be studying at Bristol for more than six months, you must apply for a Student Visa. We will send you a CAS (Confirmation of Acceptance for Studies) around three months before the start of your programme. You will need the CAS number to apply for your visa.

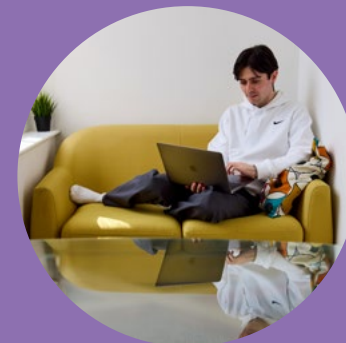
Non-UK/Irish passport holders studying at Bristol for only one semester must obtain a Standard Visitor Visa. Some nationalities can receive this visa at the UK border, but others will need to obtain it in advance of travel. You can check online whether you need to apply in advance. www.gov.uk/check-uk-visa

Our dedicated Student Visas team can help you with your visa, both before you arrive and during your studies. Our comprehensive webpages and friendly visa advisers can offer immigration information and professional, confidential advice. bristol.ac.uk/visas



Our simple online forms make it easy to apply for our Study Abroad programmes.

Apply now
bristol.ac.uk/study-abroad-apply



01

Complete an online application form.

02

Have your application and unit choices approved by an academic advisor or Study Abroad advisor at your home university.

03

Email your signed application form, along with your supporting documents, to cfsa-inbound@bristol.ac.uk



'I have loved studying abroad at the University of Bristol. I have been able to take classes that I wouldn't have been able to otherwise and I have met a ton of amazing people. My expectations have been far surpassed.'

Lauren
University of Arizona



University of
BRISTOL

CONTACT US

Contact the Centre for Study Abroad team
to talk about our Study Abroad programmes.

Email: cfsa-inbound@bristol.ac.uk

Telephone: +44 (0)117 394 0207



Register your interest
bristol.ac.uk/study-abroad-contact

DISCOVER BRISTOL ONLINE

Explore university life through our virtual tour,
with 360-degree views of the campus and city.



Explore
bristol.ac.uk/virtual-tour

GET CONNECTED

- ✕ X: @BristolUni
- f Facebook: @bristoluniversity
- @ Instagram: @bristoluni_studyabroad
- 🌐 Weibo: bristol
- 🎵 TikTok: @officialbristoluni
- ▶ YouTube: UniversityOfBristol

If you need all or part of this publication in an
alternative format please contact us:

Tel: +44 (0)117 394 1649

Email: marketing-team@bristol.ac.uk

This prospectus contains information for students planning to join
the University of Bristol in autumn 2025 and spring 2026. Every effort
is made to ensure all details are correct at the time of going to press
(July 2024). However, since the information is subject to change you
are advised to check the University's website for the latest updates:
bristol.ac.uk/study-abroad

University of Bristol Study Abroad Guide 2025/26

Design: Carruthers Tanner (www.carrutherstanner.uk)

Photography: Craig Auckland, Dara Austin, Paul Box, Alastair
Brookes, Fotohaus, Emily Gillingham, Jon Jerrome, John McMahon,
Andre Pattenden, Simon Powell, Dave Pratt, Dan Rowley, Grant
Smith, St Pauls Carnival, Philip Vile

© University of Bristol 2024

CENTRE FOR
STUDY ABROAD

BRISTOL
INBOUND

