

# Cancer Theme Newsletter

## June - July 2016

### Cancer Theme Steering Group - Recent Changes

The Cancer Research Theme's steering group membership was recently reviewed and a number of changes made. The committee now consists of six academic staff representing the various Cancer research areas, and comprises:

- Dr Sabine Hauert (Engineering Mathematics)
- Prof Paul Martin (Biochemistry / Physiology, Pharmacology & Neuroscience)
- Prof Richard Martin (Social and Commu-

- nity Medicine)
- Prof Caroline Relton (Social and Community Medicine)
- Dr Axel Walther (Bristol Cancer Institute )
- Prof Ann Williams (Cellular and Molecular Medicine)

They will continue to be supported by Dr Zoe Holland, Theme Facilitator in Research Development, and Catherine Brown, Theme administrator.

Members who would like to raise issues or bring points of discus-

sion to the table are very welcome to attend – please contact [Catherine](#) in the first instance. Wider participation amongst the community will continue through Show and Tell events (details for 2016 to be released in due course) and the Early Career Researchers' forums (see page 2).

Contact details for the steering group are available on [page 28](#).

### University Cancer Research Fund

The University of Bristol Cancer Research Fund (UCRF) supports world-leading research searching for new Cancer treatments. There is a wide range of exceptional cancer research at Bristol including leukaemia, breast cancer, prostate cancer, lung and bowel cancers.

UCRF puts out an annual call for the most innovative ideas in cancer research. It

selects projects and ideas in their early stages that have the promise to develop into high impact research. This pump-priming promotes exciting and potentially important discoveries which can, in turn, bring in significant outside funding.

The 2016 call for applications is now OPEN. This fund places special emphasis on proposals that in-

crease the chances of future external funding and/or which involve collaborative research.


Details on how to apply are available through the [Theme's intranet site](#) (single sign-on required). Only University staff who are PIs are eligible; bids are capped at £5,000.


The application DEADLINE is 20 June 2016.


### Inside this issue:

<a href="#">Events</a>	2-3
<a href="#">News</a>	4-9
<a href="#">EBI Funding</a>	10
<a href="#">Funding Opps in Cancer</a>	10-24
<a href="#">Featured Publication</a>	25
<a href="#">Recent Cancer Publications</a>	26-27
<a href="#">Contacts</a>	28



 [cancer-research@bristol.ac.uk](mailto:cancer-research@bristol.ac.uk)

 [bristol.ac.uk/cancer](http://bristol.ac.uk/cancer)

 0117 33 17610

## Early Career Researchers' Forum

The second Junior Cancer Forum was held on 2 June 2016. Thanks are extended to the organisers of the Forum -

- Dr [Hannah Taylor](#), Oncology Registrar and PhD Student in the Paul Martin Group
- Mr [Adam Chambers](#), General Surgical Registrar and PhD Student in the Ann Williams Group
- Dr [Emma Vincent](#), Research Associate on the Integrative

### Cancer Epidemiology Program (ICEP)

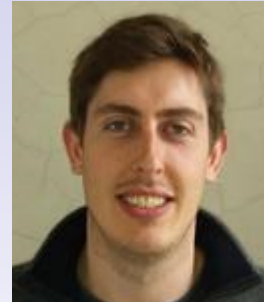
The meeting boasted excellent attendance and brought together clinicians and scientists at the earlier stages of their careers to listen to and discuss the work of Dr Luke Hounsome (Cancer Intelligence Analyst, Public Health England) and Dr Rhys Morgan (Kay Kendall Leukemia Fund Fellow).

A third meeting on 8 July will focus on fel-

lowships and grants for clinical researchers and junior researchers.

The forum aims to bring together junior cancer researchers, both clinicians and scientists, to facilitate collaboration. It is also hoped that discussions will encourage more clinicians to undertake a PhD at Bristol.

For more information contact Adam on [ac14768@bristol.ac.uk](mailto:ac14768@bristol.ac.uk)



Adam Chambers

## EVENTS

### **BACR and ECMC joint meeting: BACR and ECMC joint meeting**

18 - 19 June 2016, School of Chemistry

### **Academia Europaea Annual Conference 2016**

26 - 30 June 2016. Cardiff University

### **GO Science**

29 June 2016, 13:30-15:00. Wills Building

### **RCUK Global Challenges Health Fund Open Meeting**

29 June 2016. The Village Hotel, Coventry

### **Motion sensing in healthcare**

30 June 2016, 11.00 - 12.00. Kevin Wells (Surrey), 0.3 Merchant Ventures Building

### **Open publication of 3-D digital data from scientific research: challenges, solutions, and the need for community-wide standards**

30 June 2016, 11.00 - 12.00. Tom Davies (Bristol), Physics Building 3.21, HH



Top: Brigid Lynch  
Bottom: Kevin Wells



Wills Physics Laboratory, Tyndall Avenue

**GW4 Translational Biomedical Network: Exeter event**

30 June 2016, 13.30 - 16.30. Harrison Building Room 101, University of Exeter, Streatham Campus

**10th Mammalian Genes, Development and Disease meeting**

1 July 2016, 9.30 - 17.30. Keynote: Dr Heike Laman (Cambridge), University of Exeter, RILD building Barrack Road



**RCUK Global Challenges Research Fund Town Meetings - London**

4 July 2016, 12.00 - 16.30. The Amba Hotel, London

**RCUK Global Challenges Research Fund Town Meetings - Cardiff**

6 July 2016, 12.00 - 16.30. The Angel Hotel, Cardiff

**UK Research Office Talk for the Biomedical Sciences and Health Sciences Faculties**

6 July 2016, 10.00 - 12.00. C44, Biomedical Sciences Building



**EPSRC Engineering Theme Open Session**

7 July 2016, 11.30 AM - 12.45. Queens Building Lecture Theatre 1.15

**Soapbox Science**

16 July 2016, 10.00 - 17.00. Bristol



**GW4 Translational Biomedical Network: Bath event**

18 July 2016, 13.30 - 16.30. University of Bath, 4 West 1.2 and Atrium

**Reach West**

14 September 2016, 14.00 - 15.00. Richard Martin & Verity Leach (UoB), BRU Seminar Room, Education & Research Centre

**Engage 2016: Building Connections, Sharing Ideas**

15 September 2016, 9.00 - 14.00. Richmond Building, Queens Road

**8th Annual 'Research, Audit & Quality Improvement' Day**

18 November 2016, 9.00 - 17.00. Engineers' House, Clifton



**Skeletal systems mechanobiology and personalized medicine**

23 May 2017, 13.00 - 14.00. Ralph Müller (ETH Zürich), Seminar rooms A&B, Level 1 Learning & Research, Southmead Hospital

*Images top to bottom: Tom Davies, Heike Laman, Richard Martin, Verity Leach, Ralph Müller*

## NEWS

### Three Minute Thesis Competition

The Bristol Doctoral College, in conjunction with the Bristol Students' Union Post-graduate Network, hosted Bristol's 3rd annual Three Minute Thesis (3MT) competition. 3MT is an opportunity for post-graduate research students across the University to present their research in three minutes in language

appropriate to a lay audience. [Ji Hyun Park](#) was one of the semi-finalists who presented on 27 April 2016. Her project, Exploiting the addiction of cancer cells for selective cancer therapy, is being carried out under the supervision of Dr [Kaarim Malik](#) and Dr [Keith Brown](#).

The Three Minute Thesis is an opportunity to enhance the profile of the post-graduate research being undertaken to the wider community. The 3MT is not designed to trivialise or 'dumb down' research, but encourages researchers to consolidate their ideas and crystallise their research discoveries.



### British Science Association Film Festival

The [Bristol and Bath branch](#) of the [British Science Association](#) held Bristol's first [Science Film Festival](#) in March 2016. Members of the public of any age were asked to contribute short films of up to 10 minutes on a science theme of interest to them—prizes were awarded by a panel of expert judges.

Joint winners were *Cancer, and the art of Cell Defence* submitted

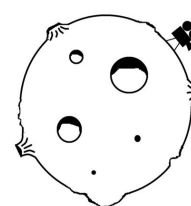
by [Grace Edmunds](#) (PhD student under the supervision of Dr [David Morgan](#) and Prof [Christoph Wuelfing](#)), Charlotte Spire, Will Foxall, Adam Garvey and Hal Hampson:

In 2015 combination treatment with two immunotherapy drugs produced some of the most startling 2 year survival rates ever seen in the history of cancer treatment. We explore the mecha-

nism by which these drugs work. Taught by a young scientist to our curious reporter, witness the magic of science decoded before your very eyes.

The full video can be seen on [Vimeo](#).

The other joint winners were *Lichen – the world's most functional couple* by Heather Nichol & Jim Lampard



Bristol  
Science  
Film  
Festival



## Genomic Medicine Centre in the West of England



A partnership made up of NHS provider organisations in Bristol, Bath, Cheltenham and Gloucestershire, universities, the West of England Academic Health Science Network, NHS commissioners and patient organisations has been designated the [West of England NHS Genomic Medicine Centre \(WEGMC\)](#).

Opened in February '16, the centre is part of a 3-year project to transform diagnosis and treatment for pa-

tients with cancer and rare diseases. This involves collecting and decoding 100,000 human genomes that will enable researchers to understand more about specific conditions and could allow personalisation of drugs and other treatments to specific genetic variants.

Eligible patients will take part in a test to be processed at Southmead before being sent nationally for sequencing. Some patients could benefit

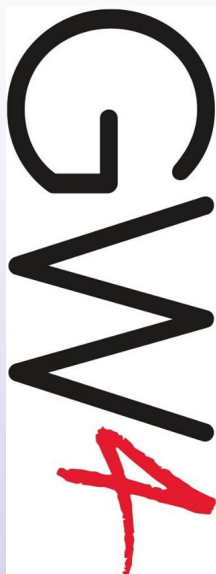
from a quicker conclusive diagnosis for a rare and inherited disease or cancer because treatment may be targeted at a particular genetic change.

*This is a huge tribute to the quality of our medical science in the west.*

*Our local doctors will help to create groundbreaking discoveries about diseases, predict who is susceptible and design personalised treatments to tackle them*

Caroline Gamlin, NHS England South West Medical Director

## GW4 Cancer Research Consortium



The recently funded Cancer Research Consortium aims to foster cross-disciplinary collaboration.

Following the first meeting held in Bath the week of 30 May 2016, a directory of cancer researchers across Bath, Bristol, Cardiff and Exeter is being created to aid with establishing joint training programmes, mentoring, workshops, and collabora-

tions.

To contribute to this directory, [click on the link](#) and add yourself to the list. You can edit/update whenever you like

*Notes on your entry:*

- Changes are automatically saved
- Paste your picture into Word first (and resize it if necessary) before pasting into the document
- Please use the keywords generated by MeSH (in the hyper-

link)

If you have any questions regarding the website, please contact [l.caggiano@bath.ac.uk](mailto:l.caggiano@bath.ac.uk).

Translating cancer discoveries into cures is a major public health challenge worldwide; the consortium is looking for scientists and clinicians from all disciplines to help fight this disease.

## Cancer Research UK Funding

Congratulations are extended to PI Dr [Karim Malik](#) for his successful application to the Drug Discovery Committee, Small Molecule Drug Discovery Project Award at CRUK.

Drug repositioning of

histone methyltransferases for the treatment of solid childhood cancers was awarded to Dr Mailk (Reader in Epigenetics, School of Cellular and Molecular Medicine) and Co-PIs Prof Lou Chesler Chesler (Institute of Cancer

Research, Sutton) and Dr Abderrahmane Kaidi (MRC New Investigator and Senior Lecturer, School of Cellular and Molecular Medicine).

*Right: Drs Malik (top) and Kaidi (bottom)*



## Translational Biomedical Research Centre

The TBRC is a new national centre which is unique in Europe. On 9 June 2016 the £6.2M centre, funded by the University of Bristol, the Medical Research Council and the British Heart Foundation, was opened by the MRC Chief Science Officer, Dr Declan Mulkeen and by the BHF Medical Director, Professor Peter Weissberg.

Translational medicine takes *in vitro* lab science and aims to prove it has positive effects on a whole organism. Prior to human trials, new discoveries are tested in animals to ensure safety and beneficial health outcomes, e.g.

to test new medical devices such as heart valves, vascular stents, joint replacement prostheses, instrumentation used for key-hole surgery, devices to deliver new drugs in patients with cancer or to test novel drugs and stem cells.

TBRC will use experimental models highly relevant to human disease and anatomy to test such pioneering approaches, devices or therapies in a state-of-the-art animal hospital theatre operating at NHS standards. Results of any interventions will then be tracked in living animals using state-of-the-art scanners, just like

in the NHS. This will allow researchers to develop new treatments and interventions whilst reducing the number of animals needed because they are able to monitor the animals over time. During and after treatments the animal will be treated by veterinary specialists that will ensure the highest standards of animal welfare and reproducibility of the procedures.

The centre will also have a bio-bank on site which will reduce the future need for animal tissue samples.

TBRC will operate under the One Health concept that recognis-

es the health of humans is connected to the health of animals and the environment, meaning that some research could benefit animals in equal measure. Veterinary clinicians will develop new methods to treat animals, which often could be as simple as adapting treatments already established in humans.

For further information, a meeting or a tour of the facility, [tbrc@bristol.ac.uk](mailto:tbrc@bristol.ac.uk)



## Human Frontier Science Program Award

The research will apply state-of-the art optogenetic tools for spatial and temporal control of nuclear F-actin, and simultaneously visualise genome dynamics in intact cells using cutting-edge cell imaging techniques

The award, made after a rigorous year-long selection process, is designed to promote cutting edge research into complex biological systems.

The team, comprising the laboratories of Professor Robert Grosse (Marburg), Dr Abderrahmane Kaidi (Bristol) and Dr Kei Miyamoto (Kikni), has been awarded US\$1.05 million for a three-year study on the role of nuclear filamentous-actin (F-actin) in regulating genome organisation and function.

Within the cytoplasm

of a cell, F-actin forms fibrous dynamic structures, which provide a delicate cellular framework and control a range a biological functions such as cell movement and muscle contraction. The existence of this form of F-actin in the nucleus of mammalian somatic cells has been debated for decades.

Thanks to new advancements in cell imaging techniques, nuclear F-actin can be detected in cell nucleus in specific conditions, which raises the possibility that it may regulate genome organisation and func-

tion.

This HFSP award will focus on testing this hypothesis and applying this knowledge to further understand fundamental biological processes, including genome organisation during cell division and cellular reprogramming.

As part of this research, Dr Kaidi's laboratory is developing and applying the microscopy-based assays for quantitative analysis of genome/ chromatin dynamics.



## Bioinformatics Group

A new bioinformatics group has been created (currently led by Tom Williams in Earth Sciences) and a dedicated seminar series and wiki are being set up. If anyone would like to contribute to the wiki, please fill in the Google document on <http://goo.gl/forms/j4TGLGbOsjrscHLS2->. The information in the

document will go towards populating the site.

Bioinformatics expertise is available through Dr Stephen Cross, Research Assistant in Imaging, who has been in place since Feb 2016 thanks to funding by the EBI. The post, based at the Wolfson Bioimaging

Facility, is for two years, and it is anticipated that it will have a demonstrable impact on research.



Tom Williams

## Professor Debbie Sharp Awarded OBE

Prof [Debbie Sharp](#), founder of the [Centre for Academic Primary Care](#) in the 1990s, has been awarded an OBE in the Queen's Birthday Honours list.

Debbie is Professor of Primary Health Care at the Centre. She was previously Lecturer and then Senior Lecturer at the United Medical and Dental Schools of Guy's and St Thomas' in the Department of General Practice, and Honorary Senior Lecturer at the Institute of Psychiatry.

In 1985 she obtained one of the first Mental Health Foundation GP Research Training Fellowships through which she completed a PhD on emotional disorders associated with childbirth in a cohort of women in south London, supervised by Profs Michael Shepherd and David Morrell. This cohort was subsequently followed up until the children were 25

years old. During her 11 years in south London, she was a partner (the first woman) at the Lambeth Road Group Practice - the academic practice attached to St Thomas' Hospital. She developed additional research interests in women's health, in particular breast cancer screening and more generic interests in primary care mental health.

She took up the foundation chair in Primary Health Care in Bristol in 1994, the first woman to be appointed to a substantive chair in medicine in Bristol, and built up a world-class department over the next sixteen years.

Her research interests broadened as she led this new department in order to attract some of the most able primary care researchers to Bristol. Primary care mental health continued to feature as has her in-

terest in childbirth-related emotional disorders. More recently she has worked on the early diagnosis of cancer, childhood obesity and complementary and alternative medicine.

One of her greatest successes has been developing a cohort of young academic GPs and seeing them flourish. She took the Centre for Academic Primary Care into the NIHR School for Primary Care where it has continued to prosecute internationally recognised research.

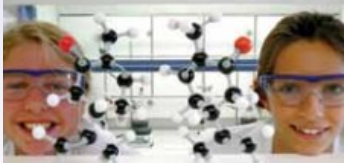
Until April 2013 she was a partner at Shirehampton Group Practice where she is still the research lead. Since standing down as head of department she has become Head of the School of Clinical Academic Training at Health Education South West Severn where she has responsibility for academic training across all specialties.



**AMENDMENT:** In the last issue we stated that Dr [Kathreena Kurian](#) was recently appointed an Honorary Reader in Brain Tumour Research. She is actually a Reader, and not Honorary. Apologies.



## Public Engagement



The Public Engagement team supports and promotes engagement beyond academia at the University of Bristol. They offer the following:

- Advice on developing engagement activities
- Help with funding applications for engagement, including as a route to impact in research grants
- Delivering teaching and training on engagement and impact
- Enabling sharing of good practice internally through an engagers' network and our annual Engage conference, as well as externally with other

universities and engagement practitioners

- Co-ordinating a programme of grant-funded innovative engagement activities
- Ensuring engagement and impact are recognised and embedded in University structures and processes

Public engagement is an exciting and rewarding part of research - working out how best to communicate the ideas from our research to stakeholders, in ways that will help them change their lives for the better. The Public En-

agement team is available to help researchers disseminate their work to the wider community, assist in finding partners in industry, policy, healthcare etc., and provide support in achieving greater impact, both at grant application and reporting stages.

The [Public Engagement office](#) publishes a bi-monthly [Engagers' Digest](#) for funding opportunities, training, news and more for those interested in public engagement. Register by emailing [cpe-info@bristol.ac.uk](mailto:cpe-info@bristol.ac.uk).

## New Enterprise Competition

The competition is the University's flagship business idea challenge which is open to students, staff, and recent graduates. Whilst there are different stages to the competition, all you really need is an original idea for a self-sustaining business. It's open to both commercial and social enterprises, and

includes everything from simple conceptual ideas through to businesses in their first year of trading. Throughout the competition participants are provided with educational events, opportunities to get feedback and support, and the chance to meet all kinds of useful contacts.

Each year the total prize pot is around £35,000, all kindly donated by sponsors. This includes cash prizes, packages of legal support, and business acceleration services.

The deadline for application is 1 September 2016. Details on how to apply are on the [website](#).







**CLAHRC West**  
 Collaboration for Leadership in Applied Health Research  
 and Care West



### **Cancer Research UK**

#### [Pioneer award](#)

Closing Date: none

Award amount: £200,000

Supports high-risk, high-reward research projects that have a clear relevance to cancer, and enables the exploration of novel ideas which may lead to new discoveries or approaches. The award supports research that, due to its novelty and lack of supporting data, would be unlikely to secure funding from more traditional sources.

### **NIHR CLAHRC West**

#### [Training bursary scheme](#)

Closing date: 1 Feb, 1 Jun & 1 Sep (annual) Award amount: £600

Gives staff from the local NHS, health and social care sector the opportunity to attend high quality research and evaluation training at half the price. Bursaries are available for 50 per cent of the course fees; the applicant or their employer is expected to fund the remaining 50 per cent. The bursary aims to promote wider engagement and improve skills in research and evidence in the CLAHRC West patch, particularly for those who have not previously had opportunities for this type of training.

You can apply for bursary support towards any course relevant to research and evaluation in health and social care. This includes study days, workshops and short courses (including individual modules) but not MSc or PhD tuition fees.

### **British Council**

#### **Newton Fund**

Closing date: 27-Jun-16

Award amount: unspecified

An opportunity to initiate or develop international collaborations through [official development assistance](#) (ODA) funds. The Fund aims to promote the economic development and welfare of either the partner countries or, through working with the partner country, to address the problems of low-income and vulnerable populations.

[Travel Grants](#) for early-career researchers

[Workshops](#) for early-career researchers led by Leading Researchers

[Institutional Links](#) that support collaboration between groups led by Leading Researchers or Established Researchers

Participating countries include: *Brazil, Colombia, Egypt, India, Indonesia, Kazakhstan, Mexico, Philippines, Turkey, South Africa, Thailand*

**International Society of Chemotherapy****John David Williams memorial award**

Closing Date: 27-Jun-16

Award amount: unspecified

Enables young scientists to attend the 30th International Congress of Chemotherapy and Infection, from 24 to 27 November 2017 in Taipei. The award will be based on the abstracts submitted by the applicant who should be the presenting author in the conference. Proposals may focus on any of the following conference topics, including:

- basic science on mechanisms of microbial pathogenesis and others
- molecular biology
- antimicrobials
- vaccines and immunology
- epidemiology
- public health
- information technology and e-health

Travel, accommodation and free registration will be offered.

**International Society of Chemotherapy****Tom Bergan Memorial Award**

Closing Date: 27-Jun-16

Award amount: unspecified

Enables young scientists to attend the 30th International Congress of Chemotherapy and Infection, from 24 to 27 November 2017 in Taipei. The award will be based on the abstracts submitted by the applicant who should be the presenting author in the conference. Proposals may focus on any of the following conference topics, including:

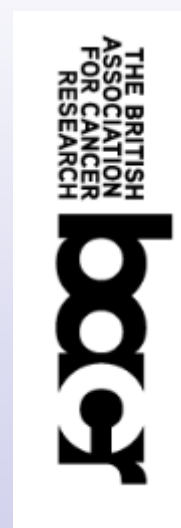
- basic science on mechanisms of microbial pathogenesis and others
- molecular biology
- antimicrobials
- vaccines and immunology
- epidemiology
- public health
- information technology and e-health

Travel, accommodation and free registration will be offered

**British Association for Cancer Research****Mid-Career Fellowships**

Closing date: 30-Jun-16

Award amount: £3,000





Enable fellows to visit a laboratory in order to advance an ongoing programme or facilitate a collaboration that may lead to new programmes of work.

Applicants must have 15 years continuous BACR membership, and be over 40 years old. Members may apply for a second award but this must be at least 3 years following the initial award.

**British Association for Cancer Research**  
[Mid-career fellowships](#)

Closing Date: 30-Jun-16

Award amount: £3,000

Enable fellows to visit a laboratory in order to advance an ongoing programme or facilitate a collaboration that may lead to new programmes of work. Applicants must have 15 years continuous BACR membership, and be over 40 years old.

**British Association for Cancer Research**  
[Non-student travel awards](#)

Closing Date: 30-Jun-16

Award amount: £1,000

Enable non-student members to attend scientific meetings relevant to cancer research. Applications are open to all individuals who have been members of the association for at least one year. Applicants are expected to submit an abstract and present their work at the relevant meeting.

**British Association for Cancer Research**  
[Travel exchanges](#)

Closing Date: 30-Jun-16

Award amount: £2,000

Enable members to visit institutions other than their own for the purposes of lecture tours or courses, or to carry out collaborative work. Visits may take place abroad or within the UK. Applicants must be BACR members for at least one year at the time of application and preference is given to junior researchers and they tend to be individuals below 40 years of age, or with less than 5 years post-doctoral experience.



**Cancer Research UK**  
[Research travel award](#)

Closing Date: 01-Jul-16

Award amount: £10,000

Enables postdoctoral researchers to work with research groups in the UK

or overseas and develop their own independent career, introduce new skills or techniques to their current research group, or promote future collaborations between institutions. Applications need to address one or more of the following categories:

- a better understanding of basic biology
- the development of expertise in a new technology
- the generation of new scientific and academic collaborations

Applications for research into cancers of unmet need and early diagnosis are particularly welcomed. Applicants must be full time postdoctoral researchers, or research assistants, research technicians or research nurses based in the UK.

**University of Bristol**  
[Vice-Chancellor's Impact Awards](#)

Closing date: 04-Jul-16

Award amount: £1,500

Applications are invited from individual researchers or teams who can demonstrate the contribution that their research has made in benefiting society within the following categories:

- Business and Economy
- Policy and Practice
- Society and Culture
- Health and Well-being

**European Research Council**  
[Starting Grants](#)

Internal closing date: 12-Jul-16

Award amount: €1.5M

Intended to enable exceptional researchers between 2 and 7 years from PhD completion to become independent research leaders and strengthen their own research team or programme. All research fields are supported.

Proposals will be handled through the University's major bids process.

**Cancer Research UK**  
[Drug development project award](#)

Closing Date: 22-Jul-16

Award amount: unspecified

Supports the development of new cancer treatments from preclinical development through to early phase patient trials. Funding is available for the fol-



University of  
BRISTOL



lowing projects:

- for development of potential new cancer treatments – including pre-clinical safety toxicology, drug manufacture, clinical formulation, assays, and biomarkers, and first in class, first in man phase one clinical trials, including combinations of unregistered and registered agents, early phase two proof of principle, non critical path trials with agents in active commercial development, and trials focusing on safety data, pharmacokinetics, biological endpoints and modulation of target biomarkers
- for approved novel agents – including managed preclinical and clinical development, compiling regulatory documents, trial sponsorship, and patients treated in a UK-wide network of clinical centres with world-leading scientific investigators and expertise in early clinical trials

Established independent researchers, clinicians, industry researchers or non-clinical researchers may apply. They must be based at an academic institution or a pharmaceutical or biotech company. Applicants are required to have a novel agent for cancer needing preclinical or clinical development. If applicants have no UK lead clinical investigator with relevant early clinical oncology trials expertise, CRUK may provide one.

### **Cancer Research UK**

[New agents committee trial grants and endorsements](#)

Closing Date: 22-Jul-16

Award amount: £150,000

Support early phase patient trials of new cancer treatments, including combinations of treatments and radiotherapy. Funding is available for the following projects:

- UK phase I/IIa oncology clinical trials of new treatments including new combinations and radiotherapy
- anything associated with the trial
- endorsement trials funded by companies or other funding bodies that have the same level of confidential expert peer review
- early phase oncology clinical trials reviewed by the experimental cancer medicine centre Combinations Alliance joint steering committee

Clinicians and established independent researchers may apply. Applicants must be clinical investigators with early clinical oncology trials expertise based at a UK academic institution. Trials must be run and the patients recruited at UK clinical centres, and the proposed treatment or combination of treatments must be novel.



**Cancer Research UK****Multidisciplinary project award**

Closing Date: 26-Jul-16

Award amount: £500,000

Supports collaborations between cancer researchers and scientists from engineering and physical science disciplines. The research themes within remit for this award include:

- direct application of physics, engineering, chemical or mathematical concepts to address the underlying physical processes of cancer, including tumour initiation, growth and metastasis
- development of new transformational approaches or the translation of technologies for direct applications in, or a clear path to, a direct application in the prevention, diagnosis or treatment of cancer

Proposals across all engineering and physical science disciplines are encouraged.

**Cancer Research UK****Career Development Fellowship**

Closing date: 11-Aug-16

Award amount: salary for one postdoc and one technician + £150,000 for equipment

Enables scientists to set up their first independent cancer research group in any area of CRUK's funding remit, with the exception of drug discovery and clinical trials. Areas may include cancer biology, biomarker research, cancer aetiology, imaging research, pre-clinical research, early diagnosis, epidemiology, statistics and methodology, radiotherapy research, cancer prevention and immunology.

Post-doc and early-career researchers may apply. Applicants should have between three and eight years of research experience since completing their PhD at the time of applying.

**Cancer Research UK****Career Establishment Awards**

Closing date: 11-Aug-16

Award amount: salary for one postdoc and one technician + £150,000 for equipment

Enables new group leaders to enhance their cancer research in any area of CRUK's funding remit, with the exception of clinical trials and drug discovery. Areas may include cancer biology, biomarker research, cancer aetiology, imaging researcher, pre-clinical research, early diagnosis, epidemiology,







statistics and methodology, radiotherapy research, cancer prevention and immunology.

Early-career researchers and established independent researchers may apply. Applicants should have at least three and no more than eight years of research experience after completing their PhD.

**Cancer Research UK**  
[Senior Cancer Research Fellowship](#)

Closing date: 11-Aug-16

Award amount: unspecified

Enables scientists to establish or further develop an independent cancer research group in any area of the CRUK's funding remit, with the exception of clinical trials and drug discovery. Areas may include cancer biology, biomarker research, cancer aetiology, imaging research, pre-clinical research, early diagnosis, epidemiology, statistics and methodology, radiotherapy research, cancer prevention and immunology.

Established independent researchers may apply. Applicants should have between eight and 14 years of postdoctoral research experience since completing their PhD at the time of applying.

**Cancer Research UK**  
[New agents committee preclinical combination grants](#)

Closing Date: 22-Aug-16

Award amount: £50,000

Support the development of ideas for new combination treatments for cancer from the laboratory to a clinical trial in cancer patients. Funding is available for preclinical in vitro and in vivo studies of new drug combinations, including novel combinations with radiotherapy and established drugs.

**Cancer Research UK**  
[Programme foundation awards](#)

Closing Date: 23-Aug-16

Award amount: £1.5M

Enable cancer researchers with eight to 14 years' experience post-PhD to establish or further develop their independent research group. Research proposals should address the following areas:

- basic biological research relating to cancer
- preclinical studies that will generate biological data to underpin therapeutic development
- biomarkers

- imaging
- radiotherapy
- the application of engineering and physical sciences to cancer

## European Molecular Biology Laboratory

### EI3POD postdoctoral fellowship programme

Closing Date: 05-Sep-16

Award amount: unspecified

Enables researchers to take part in international and interinstitutional collaborations, or an intersectional experience, whilst carrying out interdisciplinary research. Applicants should propose their own research projects, and choose one of the three available specialisation pathways:

- interdisciplinary EIPOD, aimed at an academic career path and involving an interdisciplinary research project which includes one coordinating group leader and one partner laboratory both from EMBL faculty
- international or inter-institutional EIPOD, including an interdisciplinary research project that should involve EMBL supervisors, and one external academic partner
- intersectorial EIPOD, involving an interdisciplinary research project that is designed to foster exposure to the applied or commercial side of science, and involves EMBL supervisors and either one industry partner from a group from the EMBL network of institutionalised partnerships or collaborations, or an active involvement of an EIPOD in intellectual property generation, out-licensing and, if applicable, in the first steps towards a spin-off activity

The programme includes mandatory training modules in intellectual property, entrepreneurship in life sciences, research ethics, career development, gender dimension in science and outreach, public management and dissemination of knowledge on scientific progress.

Applicants of any nationality who hold a PhD or have four years of full-time equivalent research experience may apply. Approximately 20 three-year fellowships are available, with funding for cross-disciplinary projects, and healthcare benefits and pension access.

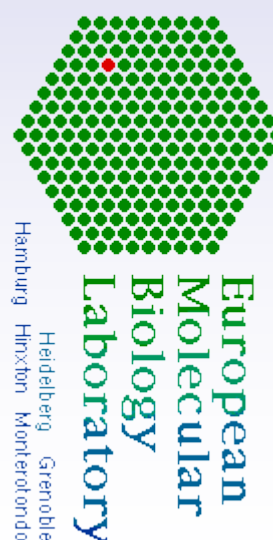
## Cancer Research UK

### Postdoctoral research bursary for clinical trainees

Closing Date: 06-Sep-16

Award amount: £70,000

Supports clinical trainees to undertake a research project after completion of a PhD. Applications from any area of CRUK's funding remit, with the exception of clinical trials and drug discovery, will be considered.





Clinicians, postdocs, early career researchers and health professionals may apply. Applicants must hold a higher degree, such as MD or PhD, in a cancer relevant research area, a national training number at the time of the award, and have secured protected time and salary for their research. Also, applicants should not have held any previous postdoctoral fellowships.

### **Cancer Research UK** [Pre-doctoral research bursary](#)

Closing Date: 06-Sep-16

Award amount: £25,000

Provides short term funding to allow clinicians and other health professionals to get involved in research projects early in their career. Applications from any area of the CRUK funding remit will be considered. The bursary should be used to give the applicant a greater understanding of research before deciding whether to undertake a PhD or MD, or give the applicant the time and resources to obtain preliminary data before applying for a PhD or MD.

Applicants must be residents and working in the European Economic Area for three years immediately before applying and should intend to pursue a medical career in the UK.

### **Department of Health** [Health services and delivery research programme – researcher-led workstream: 16/52, 16/53](#)

Closing date: 08-Sep-16

Award amount: unspecified

Supports research into the quality, appropriateness, effectiveness, equity and patient experience of health services. For this round, the emphasis is on large scale studies of national importance, such as research addressing issues of major strategic importance to the NHS, research likely to lead to changes in practice or having the potential to be applied to other conditions. Applicants may submit either a standard outline proposal or an evidence synthesis full proposal.

The workstream has a continued interest in the following research areas:

- primary care interventions
- very rare diseases
- long-term conditions in children
- applied research into mesothelioma



**Department  
of Health**

**National Institute for  
Health Research**  
**NHS**

NIHR will fund HEIs at a maximum of 80 per cent of full economic costs, except for equipment worth over £50,000.

### Medical Research Council

#### [Clinical research training fellowship](#)

Closing Date: 08-Sep-16

Award amount: unspecified

Enables clinically qualified, active professionals to undertake specialised or further research training in the biomedical sciences within the UK. Applications from basic studies to translational and developmental clinical research are welcome. The fellowship supports clinicians to undertake a higher research degree, while medically qualified applicants with a PhD can undertake early postdoctoral training enabling them to be competitive at the clinician scientist fellowship level.

Veterinarians may apply if they have equivalent qualifications.

### Medical Research Council

#### [MRC/DFID African research leader scheme](#)

Closing Date: 14-Sep-16

Award amount: £750,000

Aims to strengthen research leadership across sub-Saharan Africa by attracting and retaining researchers of high ability to lead research programmes on key global health issues pertinent to the region. The scheme offers the African research leader an opportunity to spend three months in a UK institution for further development and training.

The focus is on talented 'rising star' African research leader candidates having a high potential to attract international recognition and external funding. The proposed research programme must tackle health issues within the MRC/DFID global health remit, such as infections, nutrition, cancer, epidemiological or public health research.

Candidates should be nominated by a UK-based principal investigator who should submit the application. Candidates should be early- to mid-career researchers who have completed their PhDs and have spent at least the last three years in biomedical or health research. Candidates with only a master's degree but otherwise exceptionally outstanding track record may also be considered.

### British Council – Newton Fund

#### [UK-China PhD Placement Programme](#)

Closing date: 20-Sep-16

Award amount: unspecified





Offers sponsorship for UK and Chinese PhD students and their supervisors to spend a period of study of three to 12 months (for PhD students) and up to three months (for supervisors) at higher education institutions in China or the UK. Funding is provided by the UK on the basis that it will be used to fund programmes that will contribute to the UK's [Official Development Assistance](#) (ODA) commitment.

The focus is on research areas that reflect the common interests and demands of both countries, including health and life sciences.

### **Cancer Research UK** [Experimental Medicine Programme Awards](#)

Closing date: 26-Sep-16

Award amount: £5M

Support investigator-led studies for ambitious translational research conducted in the clinical setting with the objective of optimising treatment and maximising patient benefit. Translational research considered within the scheme will typically be associated with, or lead to, one or more clinical trials. Involvement of an experienced clinical trials unit is expected. The programme is aimed at established independent researchers and clinicians.

### **Cancer Research UK** [Late phase clinical trial awards](#)

Closing Date: 26-Sep-16

Award amount: £1.5M

Support investigator-led studies for cancer treatment including chemotherapy, radiotherapy and surgery with the principal objective of improving survival. These are typically phase III trials, although large scale phase II trials, phase II/III trials and phase IV trials will also be considered. Trials should have clinical primary endpoints. Involvement of an experienced CTU is expected.

### **Cancer and Polio Research Fund** [Research grants](#)

Closing Date: 15-Oct-16

Award amount: unspecified

Support research into cancers, with particular reference to the causes, development and treatment of these diseases, or research into polio and other crippling diseases. The fund does not usually support research in other fields but may consider proposals that are novel and that require pump-priming. Grants may be used for direct costs of research and to support research symposia or lectures for the dissemination of findings.



**Kay Kendall Leukaemia Fund****Junior research fellowships**

Closing Date: 21-Oct-16

Award amount: unspecified salary +  
£18,000 equipment and travel

Support individuals wanting to pursue research into haematological malignancies. Non-medical scientists who will usually have one to four years postdoctoral experience may apply. Clinicians seeking funding for a PhD in the field of leukaemia research, usually at a UK centre, may apply for a clinical research fellowship. Applications will be considered on any aspect of the study of leukaemia interpreted in its broadest sense, including:

- molecular biology and biochemistry
- virology
- immunology
- cell biology
- epidemiology
- diagnostic and therapeutic strategies, including gene transfer

**Cancer Research UK****Advanced clinician scientist fellowship**

Closing Date: 24-Oct-16

Award amount: unspecified

Offers clinician scientists the opportunity to develop independence and leadership in their field of academic research alongside their clinical practice. The following areas will be considered, but fellowships are not restricted to one area and may span multiple areas of research:

- basic biological research relating to cancer
- preclinical studies
- biomarkers
- imaging
- radiotherapy research
- engineering and physical sciences applied to cancer
- population research

Applicants must have completed a higher degree, MD or PhD, in a cancer-relevant research area and previously undertaken a significant period of postdoctoral research, typically more than three years. Applicants must also have obtained their certificate of completion of training and hold consultant status. Applications will be considered from any area of CRUK's funding remit, with exception of clinical trials and drug discovery.

THE KAY KENDALL LEUKAEMIA FUND



## **Cancer Research UK**

### [Clinician scientist fellowships](#)

Closing Date: 24-Oct-16

Award amount: unspecified

Enable scientists to develop their clinical academic research career through a period of postdoctoral training, and will enable successful fellows to make the transition from doctoral research training to an independent clinical academic post. The following areas will be considered, but fellowships are not restricted to one and may span multiple areas of research:

- basic biological research relating to cancer
- preclinical studies
- biomarkers
- imaging
- radiotherapy research
- engineering and physical sciences applied to cancer
- population research

Applicants must have completed a higher degree, MD or PhD, in a cancer-relevant research area and be supported by an appropriate research group and supervisor. Applicants must also have obtained their certificate of completion of training and hold consultant status, or hold a national training number, NTN or NTN(A), and have clear plans for obtaining their CCT. Applications will be considered from any area of CRUK's funding remit, with exception of clinical trials and drug discovery.

## **European Society of Surgical Oncology**

### [Training fellowships](#)

Closing Date: 31-Oct-16

Award amount: €10,000

Enable young surgeons to visit a specialist centre outside their own country in order to expand their experience and learn new techniques. Specialists, trainees or junior doctors under the age of 40 or in a training grade, with intention of specialising in a sub-speciality of surgical oncology may apply. Applicants must be or become members of the society before the start date of the award. European applicants may choose to visit European or non-European units. Eight standard training fellowships, worth €2,000 each, for stays of up one to three months are available, and one major training fellowship, worth €10,000 for stays of four to 12 months.

## **Dowager Countess Eleanor Peel Trust**

### [Peel and Rothwell Jackson postgraduate travelling fellowships](#)

Closing Date: 04-Nov-16

Award amount: £30,000



Enable researchers to spend up to one year at a centre of international excellence for the purpose of research, advanced study or the acquisition of a new clinical skill unlikely to be available in the UK. Candidates should be qualified and registered to practise in medicine, nursing or another health profession.

### Great Britain Sasakawa Foundation

#### Butterfield awards

Closing Date: 15-Dec-16

Award amount: £15,000

Aim to encourage and facilitate exploratory exchanges and collaborations between qualified professionals in Japan and the UK, as well as investigation of scientific, clinical, social and economic aspects of medicine in which Japanese and British scientists, practitioners and policy makers may learn from each other. Applicants are normally expected to have an existing research record, but consideration will also be given to practitioners managers, carers or others in health-related fields. Preference will be given to those who have not previously been involved in a UK-Japan collaborations, and applications from early-stage researchers are particularly welcome. Areas currently of interest include health management; public health; health education; palliative care; stem cell technology; patient and carer involvement; cancer; and design for healthcare.

Substantial funds are also available for support of conferences and publications bringing together UK and Japanese expertise



THE DOWAGER COUNTESS ELEANOR PEEL TRUST

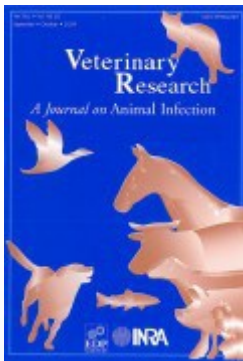
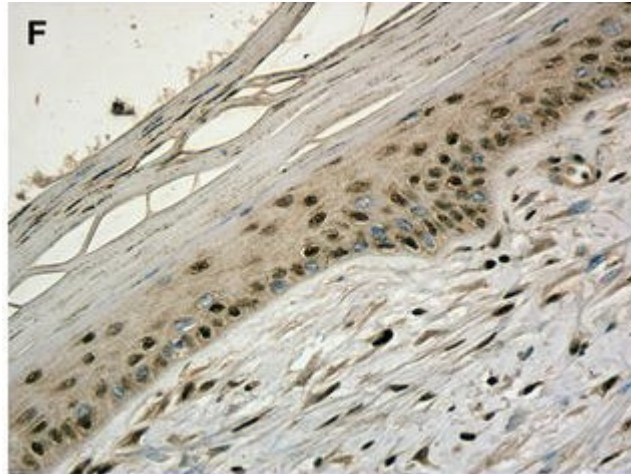




## FEATURED PUBLICATION

### Both tumour cells and infiltrating T-cells in equine sarcoids express FOXP3 associated with an immune-suppressed cytokine microenvironment

Wilson D & Hicks C (2016). *Veterinary Research*. 47, pp55-69



Bovine papillomavirus (BPV) infections of equine species have a central role in the aetiology of equine sarcoids; a common benign skin tumour of horses, zebras and donkeys. Within the lesions, all of the early papillomavirus genes are expressed and promote the excessive replication of fibroblasts which characterise these tumours. Equine sarcoids differ from BPV induced fibro-papillomas of cattle (the natural host of BPV), in that they do not produce high amounts of virus particles, do not usually regress spontaneously and do not sero-convert to BPV; features which suggest that affected horses lack an effective anti-viral immune response to BPV. Equine sarcoids contain large numbers of CD4<sup>+</sup> CD8<sup>+</sup> dual positive T-cells which uniformly express FOXP3, the key transcription factor of regulatory T-cells, and FOXP3 is also expressed within the BPV infected fibroblasts. Compared to healthy skin, sarcoids showed increased mRNA transcription for FOXP3 and the regulatory cytokine TGFβ. Transcription of IL17, which has been shown to have a regulatory function in human papillomavirus-associated tumours, was also elevated in equine sarcoids compared to spleen. In contrast, the levels of mRNA transcripts for effector T cell cytokines IL2, IL4 and interferon-gamma (IFNγ) were not elevated in sarcoids compared to healthy skin or spleen. Similarly neither interferon-alpha (IFNα), interferon-beta (IFNβ) nor IL12 family members were elevated in sarcoids compared to normal skin. We suggest that the regulatory cytokine micro-environment within sarcoids enables the persistence of the lesions by preventing an effective anti-viral immune response.

*Image caption: Formalin fixed section of equine sarcoid stained with rabbit anti-FOXP3, the majority of nuclei in the tumour are dark brown indicating they express FOXP3. The FOXP3 staining extends into the nuclei of some basal cells within the epidermis and the stratum spinosum.*

## RECENT PUBLICATIONS IN CANCER

Potter S, Conroy EJ, Williamson PR *et al.* (in press). [The iBRA \(implant Breast Reconstruction evAluation\) Study: Protocol for a prospective multi-centre cohort study to inform the feasibility, design and conduct of a pragmatic randomised clinical trial comparing new techniques of implant-based breast reconstruction.](#) *Pilot and Feasibility Studies*.

Kar SP, Beesley J, Al Olama AA, Michailidou K, Tyrer J & Donovan J (in press). [Genome-wide Meta-analyses of Breast, Ovarian and Prostate Cancer Association Studies Identify Multiple New Susceptibility Loci Shared by At Least Two Cancer Types.](#) *Cancer Discovery*.

Biddle L, Paramasivan S, Harris S, Campbell R, Brennan J & Hollingworth W (2016). [Patients' and clinicians' experiences of holistic needs assessment using a cancer distress thermometer and problem list: A qualitative study.](#) *European Journal of Oncology Nursing*. 23, pp59-65

Turner E, Metcalfe C, Donovan J *et al.* (2016). [Contemporary accuracy of death certificates for coding prostate cancer as a cause of death: Is reliance on death certification good enough? A comparison with blinded review by an independent cause of death evaluation committee.](#) *British Journal of Cancer*. Published online 2 June 2016.

Strong S, Paramasivan S, Mills N, Wilson C, Donovan J & Blazeby J (2016). [The trial is owned by the team, not by an individual: A qualitative study exploring the role of teamwork in recruitment to randomised controlled trials in surgical oncology.](#) *Trials*. 17(212)

Clive A, Taylor H, Dobson L *et al.* (in press). [Surgical and large bore pleural procedures in malignant pleural mesothelioma and radiotherapy trial \(SMART Trial\): a randomised, multi-centre, open-label, phase 3 trial evaluating whether prophylactic radiotherapy reduces the incidence of procedure tract metastases.](#) *The Lancet Oncology*.

McNair A, Whistance R, Forsythe R *et al.* (in press). [Core Outcomes for Colorectal Cancer Surgery: A Consensus Study.](#) *PLoS Medicine*.

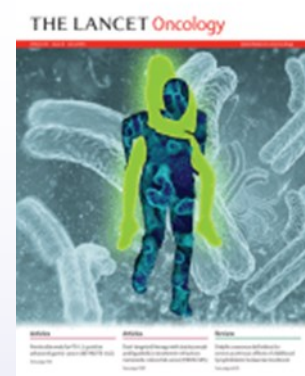
Hoch JS, Beca J, Chamberlain C & Chan KKW (2016). [The right amount of chemotherapy in non-curable disease: Insights from health economics.](#) *Journal of Cancer Policy*. Accessed online 17 June 2016.

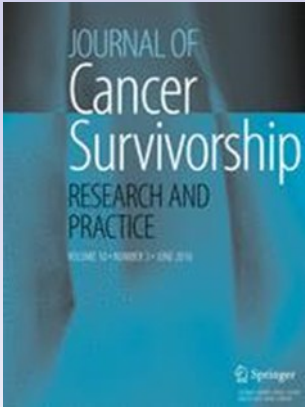
The Mammary Fold Academic and Research Collaborative (2016). [Variation in the management of ductal carcinoma in situ in the UK: Results of the Mammary Fold National Practice Survey.](#) *European Journal of Surgical Oncology*. Available online 1 June 2016.

### Pilot and Feasibility Studies



BioMed Central  
The Open Access Publisher





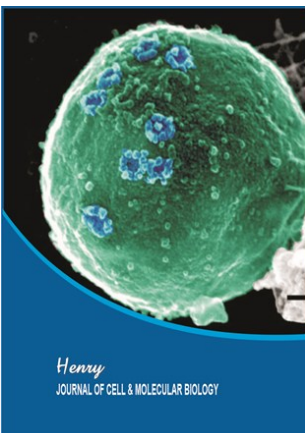
Clive A, Jones H, Bhatnagar R, Preston NJ & Maskell N (2016). [Interventions for the management of malignant pleural effusions: a network meta-analysis](#). *Cochrane Database of Systematic Reviews*. 5(244).

Coffey L, Mooney O, Dunne S, Sharp L, Timmons A, Desmond D, O'Sullivan E, Timon C, Goberman-Hill R & Gallagher P (2016). [Cancer survivors' perspectives on adjustment-focused self-management interventions: a qualitative meta-synthesis](#). *Journal of Cancer Survivorship*. Published online 5 May 2016.



Baumann BC, Bosch WR, Bahl A et al. (2016). [Development and validation of consensus contouring guidelines for adjuvant radiation therapy for bladder cancer after radical cystectomy](#). *International Journal of Radiation Oncology*. Published online 7 May 2016.

Salgado N, Habington P, Itasaki N & Scholz D (2016). [Photodynamic application of Hexvix for cancer therapy](#). *Journal of Cell and Molecular Biology*. Published online 19 April 2016.





Elizabeth Blackwell Institute  
for Health Research

**Theme Co-Lead:**

Professor [Paul Martin](#)

*Professor of Cell Biology*



**Theme Co-Lead:**

Dr [Axel Walther](#)

*Senior Lecturer and Head of  
Research, Bristol Cancer Institute*



**The Cancer Theme is led  
by a Steering Group:**

- Dr [Sabine Hauert](#), *Engineering Mathematics*
- Dr [Zoe Holland](#), *RED Facilitator*
- Prof [Richard Martin](#), *Professor of Clinical Epidemiology*
- Prof [Caroline Relton](#), *Professor of Epigenetic Epidemiology*
- Prof [Ann Williams](#), *Professor of Experimental Oncology*
- [Catherine Brown](#), *Theme Administrator*



[cancer-research@bristol.ac.uk](mailto:cancer-research@bristol.ac.uk)



[bristol.ac.uk /cancer](http://bristol.ac.uk/cancer)



0117 33 17610