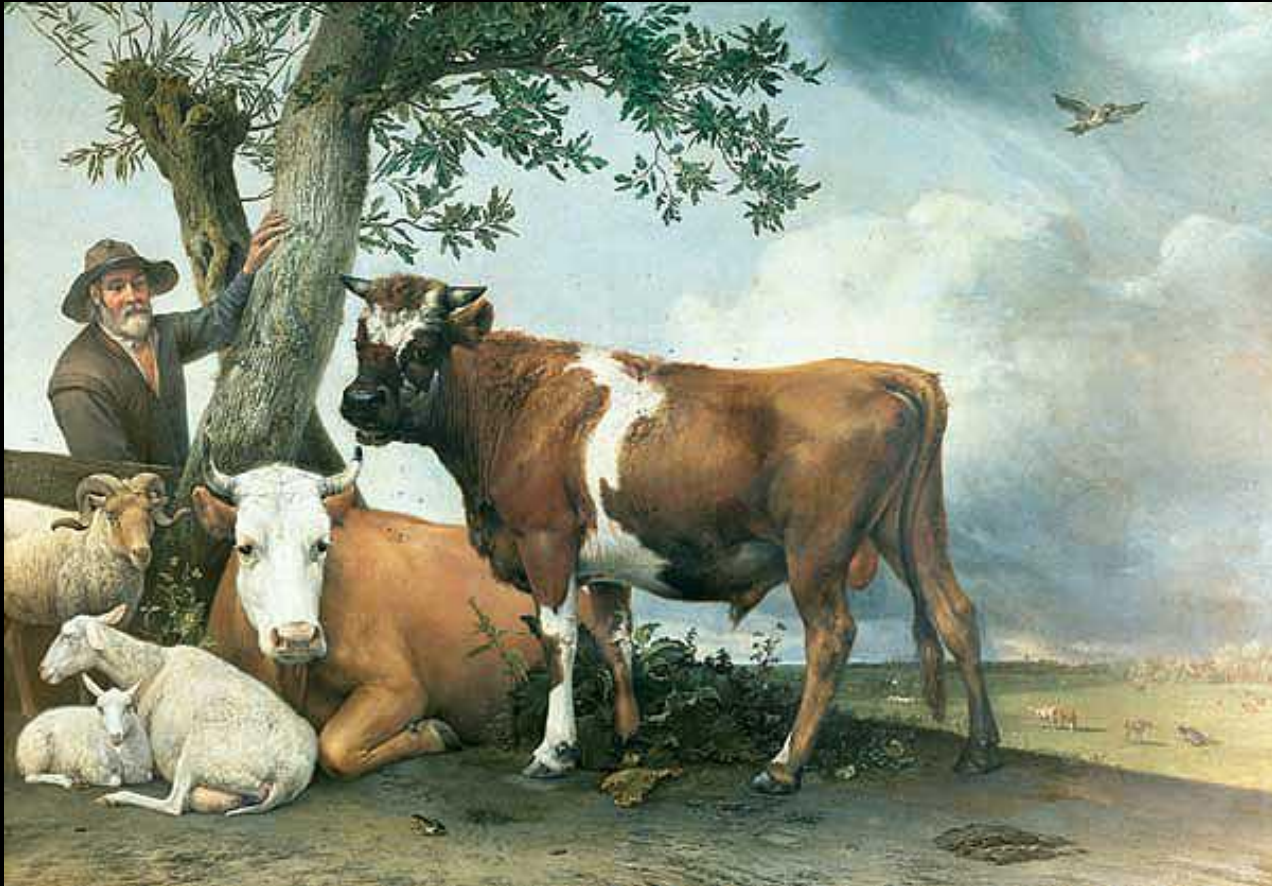
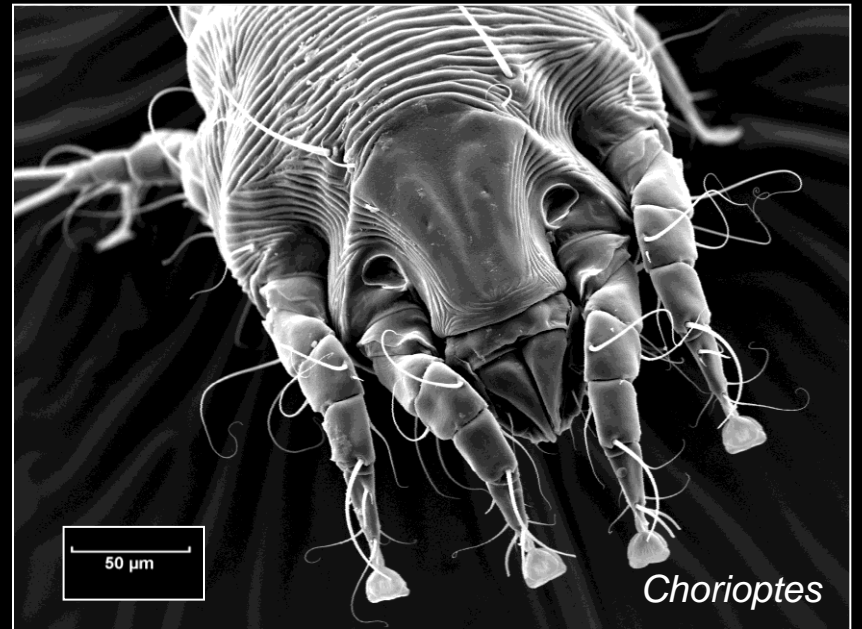


Impact?



Richard Wall

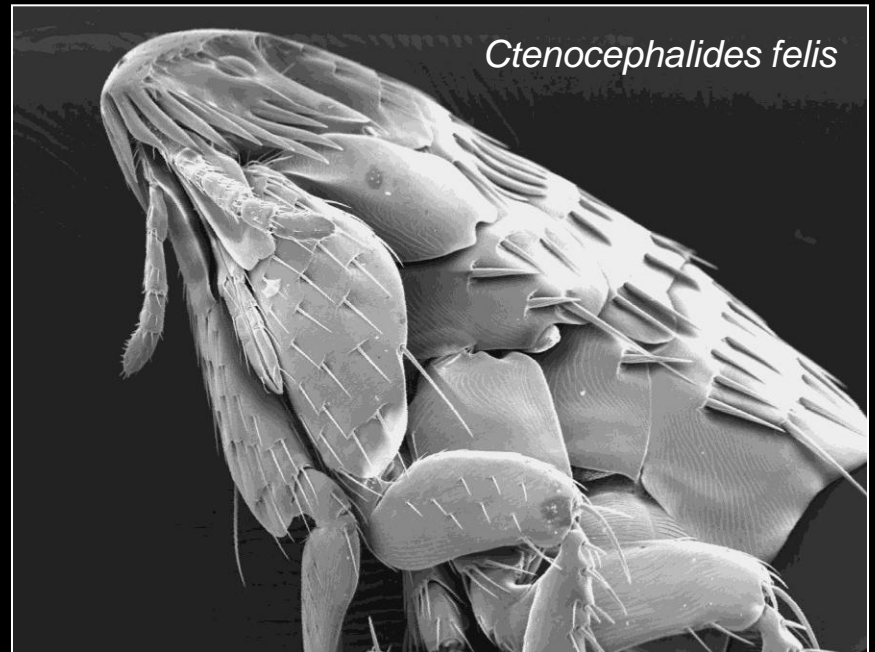




Chorioptes



Ixodes ricinus



Ctenocephalides felis



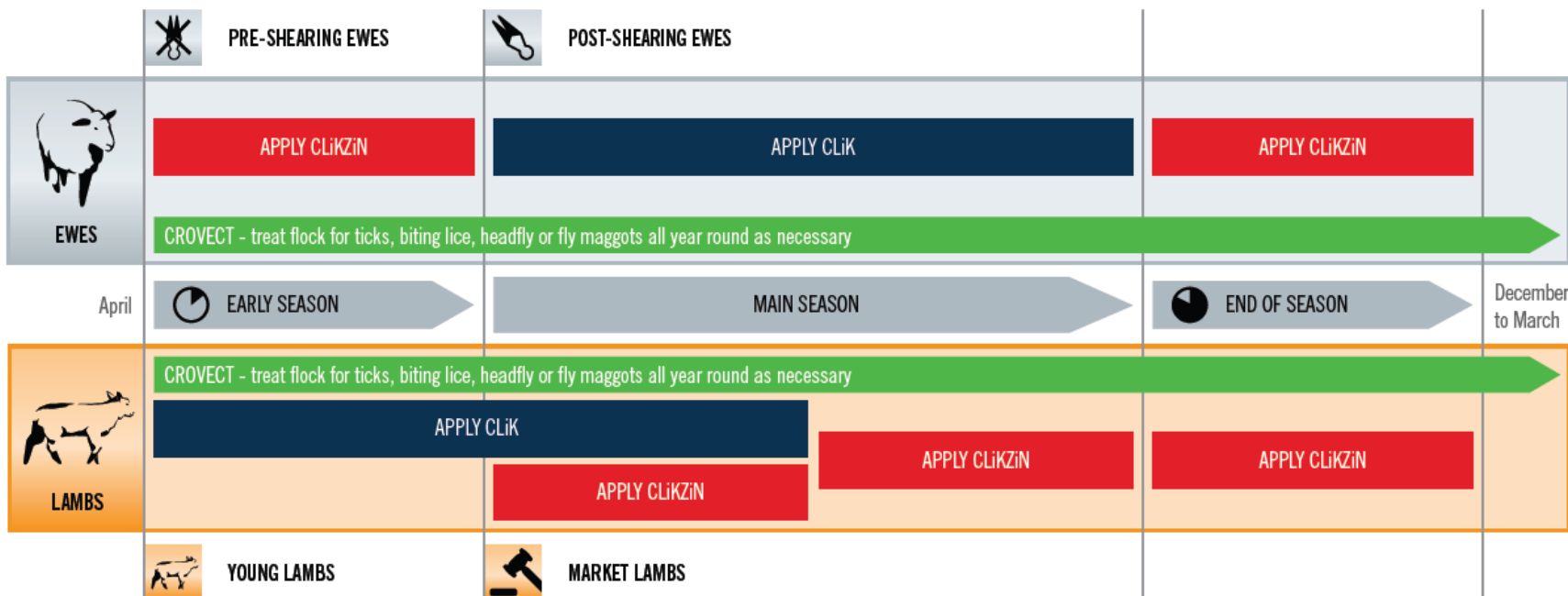




Recommended usage periods of CLiK®, CLiKZiN® and CROVECT® for year-round ectoparasite cover*



protecting the future of your flock



Blowfly prevention

EARLY SEASON

Early season lambs – dose with CLiK
Farmers benefit from value for money when they apply CLiK to young lambs, as they get 16 weeks' cover with a 20% lower cost per dose.¹

Pre-shearing ewes – dose with CLiKZiN
A recent study has shown that CLiKZiN provides complete protection for ewes against early season strike challenge pre-shearing.¹

MAIN SEASON

Market lambs – dose with CLiKZiN
Farmers benefit from CLiKZiN's 7 day meat withdrawal.

Ewes after shearing – dose with CLiK
Farmers benefit from one treatment giving full cover throughout the season. This means they are likely to have to gather ewes only once, saving time, money and stress.

END OF SEASON

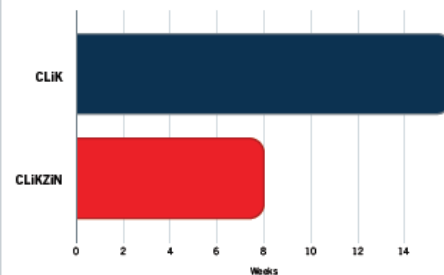
Whole flock extra cover – dose with CLiKZiN
In the south the blowfly season can start earlier and lasts longer. In future years, the blowfly strike season is expected to last later into the winter.²



■ Recommended dosage period
One dose = 16 weeks' cover

■ Recommended dosage period
One dose = 8 weeks' cover

Duration of blowfly protection



Treatment of additional ectoparasites

ALL YEAR ROUND

Whole flock as necessary – dose with Crovect

- Ticks can be a problem all year, but they become particularly prevalent in autumn and also spring
- Biting lice are a relatively common problem, but are generally seen in the winter
- Headfly can be a problem in the summer
- Blowfly maggots can surface in the summer if farmers aren't using preventative treatment



■ Recommended dosage period



**THIS IS
THE ENEMY**

**STAMP OUT
SCAB**

SHEEP SCAB

What are you doing about it?

**Sheep Scab Training and
Awareness Campaign**
stampoutscab@adas.co.uk
Tel: 01432 820444

This project is supported by the Rural Development Programme for England (RDPE) for which Defra is the Managing Authority, part funded by the European Agricultural Fund for Rural Development: Europe investing in rural areas.





Identify your 2 most fertile
with a Clearblue
Digital Ovulation Test.

TV LISTINGS | WATCH LIVE | PROGRAMMES | WATCH 4oD

Search

Go

Embarrassing Bodies

WATCH NOW

ABOUT

SERIES & EPISODES

ALL CONDITIONS

HEALTHCHECKER

GALLERIES

The Embarrassing Illnesses doctors set off on a UK roadshow in an innovative attempt to raise health awareness and de-stigmatise 'embarrassing' body parts and medical conditions



Last on Channel 4
Tue 18 Dec, 8pm

> [Visit the site for award-winning health advice](#)



> Share this



WATCH NOW ON 4oD

Stating the obvious?

1. You need to be proactive to achieve impact!

..... this takes time, thought and effort

2. You need to identify your target group ...

..... and how to reach them.

3. You need to know what your target group want

..... which may not be immediately obvious!