



Flow diagram to show options for the progression and completion of students on taught modular programmes

These flow diagrams are for illustrative purposes only and must be read in conjunction with the relevant regulations that are set out in this Code.

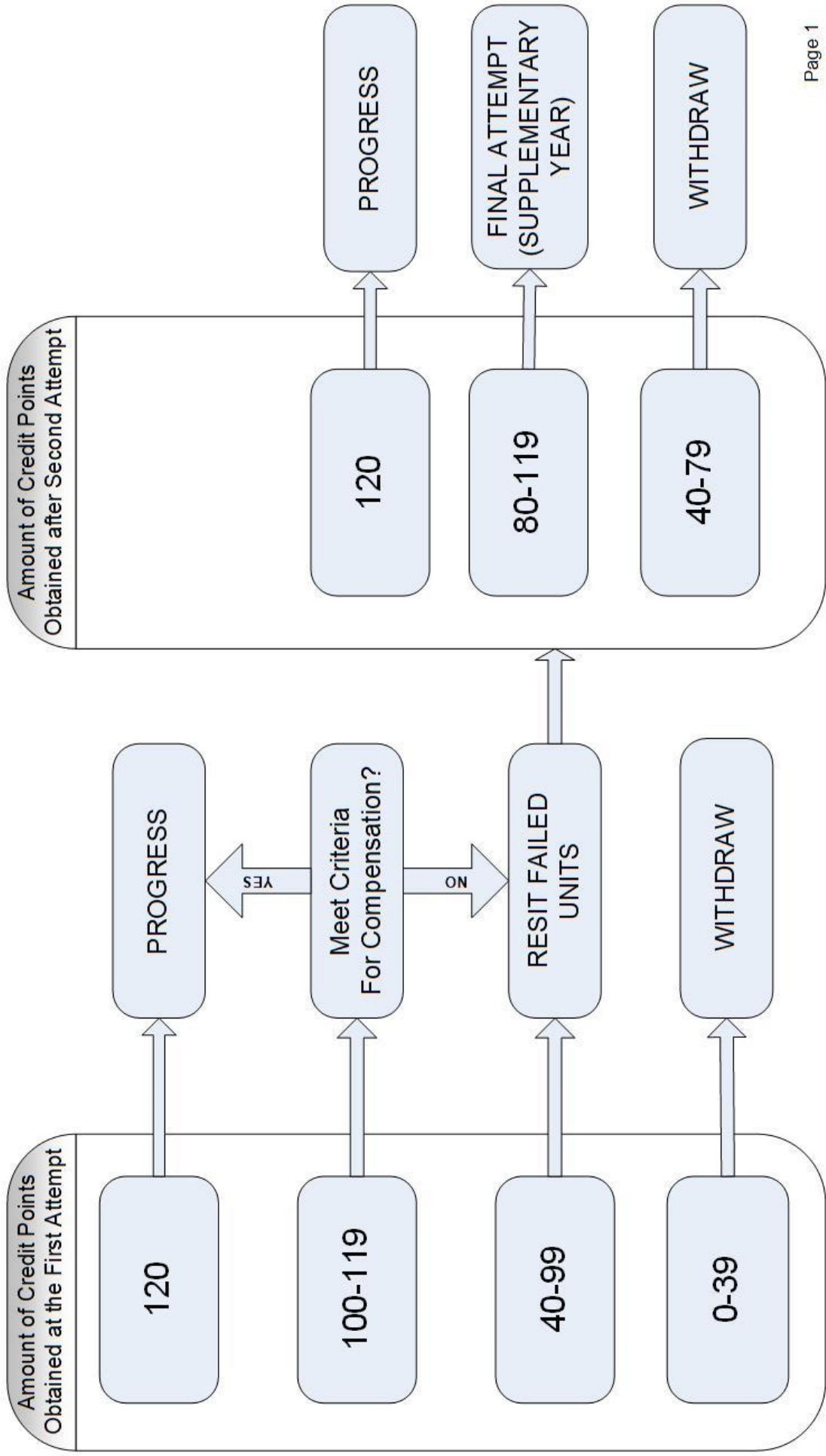
The flow diagrams for progression and completion in an undergraduate modular programme represents a typical Honours Bachelors or Integrated Masters programme; they do not therefore reflect programme-specific regulations with regard to must-pass units and conditional progression.

Notes:

- *Students newly registered on programmes owned by the Faculty of Engineering from 2022/23 will be subject to different rules on compensation for the purposes of progression or completion of the programme, as set out in section 30 of the Taught Code.*

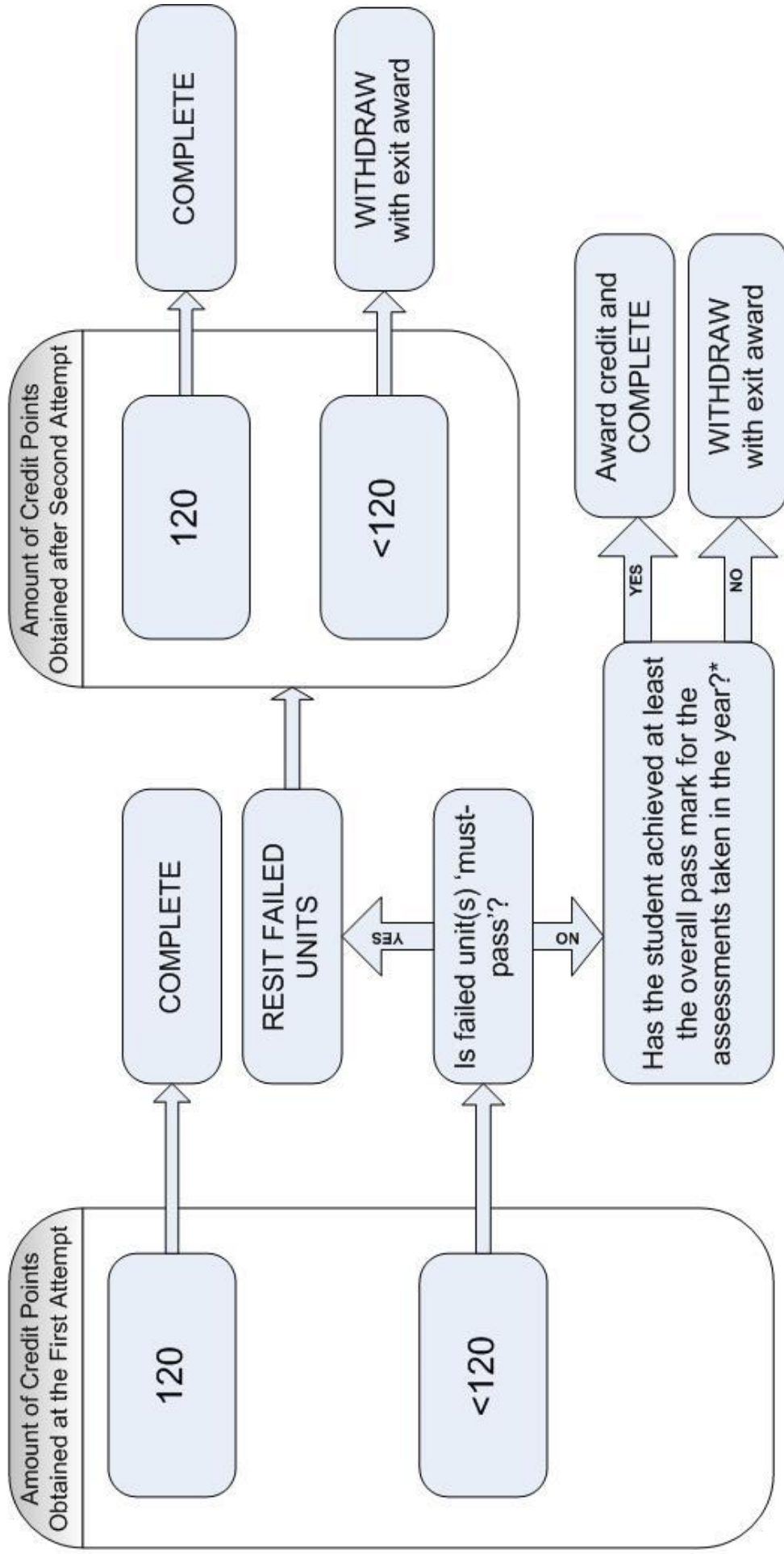
The flow diagrams for progression and completion in a taught postgraduate programme represents a typical Masters programme where the taught component is 120 and the dissertation 60 credit points. The flow diagrams do not therefore represent the MRes or MSc in Social Work.

Flow Diagram for Student Progression in Undergraduate Modular Programmes



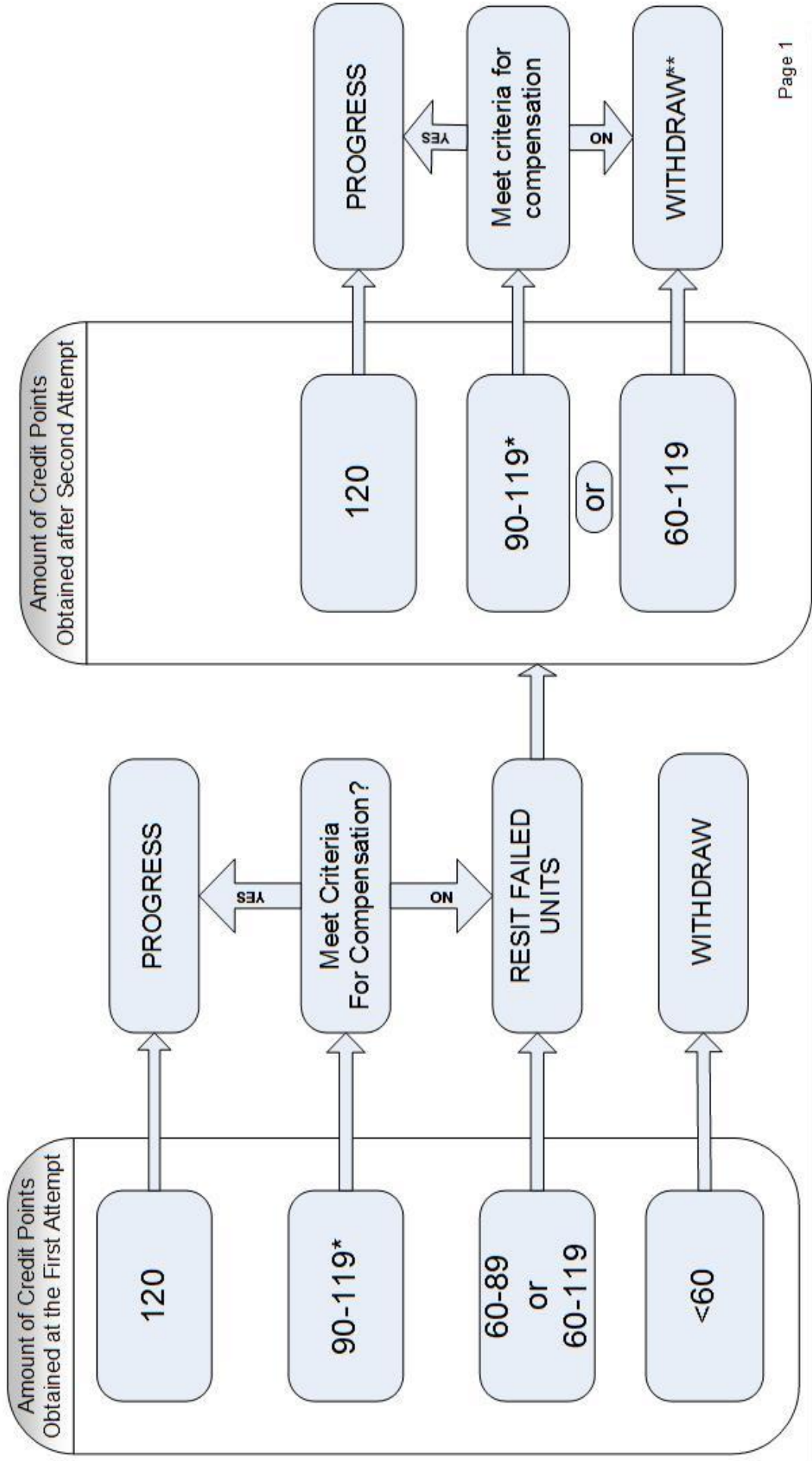
Flow Diagram for Completion in the Final Year of Study in Undergraduate Modular Programmes

For newly registered students starting in and after 2011/12



* a Faculty Board of Examiners can treat the final year of study as an overall block of 120 credit points for the purpose of awarding a qualification

Flow Diagram for Student Progression from the Taught Component in Taught Postgraduate Master's Programmes



* A programme may apply compensation at either the first or the second attempt.
 ** A Board of Examiners may, exceptionally, permit a final opportunity to be assessed, normally as part of supplementary year.

Flow Diagram for Completion of the Dissertation Stage in Taught Postgraduate Master's Programmes

