

CHAPTER TWO:

MAPPING DEPRIVATION

INTRODUCTION

It is of great importance when developing neighbourhood renewal policies that the meaning of neighbourhood deprivation is clearly understood. Unfortunately, the term area deprivation can have at least three different meanings:

1. A compositional meaning, whereby an area is considered to be deprived if it contains a large number of poor people. In this case, the spatial effects are entirely due to the concentration of poor people in a given area – there are no independent area effects.
2. A collective meaning, whereby an area is considered to be deprived because if it contains a lot of poor people a ‘social miasma’ may exist. That is, a concentration of poor people will exert a collective influence, above and beyond their individual circumstances, for example, it may be difficult to find a job if you live in a deprived area because employers are prejudice against people from poor areas. Although, this is a commonly held belief there is relatively little (other than anecdotal) evidence to support it.
3. A public goods or environmental meaning, whereby an area is considered deprived because it lacks facilities (roads, hospitals, schools, libraries, etc.) or because it suffers from high pollution levels.

These three meanings of area deprivation are separate and distinct, but are often confused. For example the Government’s neighbourhood renewal strategy confuses all these three different meanings of neighbourhood deprivation and the Index of Multiple Deprivation confuses two of them (e.g. poor people and poor services). Unfortunately, the policies necessary to effectively help an area with a lot of ‘poor’ people may be different from the policies needed to help an area with ‘poor’ services. Similarly, a different set of policies may be effective at reducing area ‘stigma’, since not all poor areas are stigmatised and not all stigmatised areas contain a lot of ‘poor’ people.

It is also essential to be clear on the definition of area deprivation that is being used when attempting to develop measures to identify the ‘poorest’ areas, since the three types of area deprivation have different geographies. For example, on the national scale the majority of poor areas which contain ‘poor’ people are found in the major cities (Inner London, Bristol, Plymouth, etc). Whereas the majority of areas with ‘poor’ access to services are often the remoter rural areas where lower proportions of ‘poor’ people live. The inner cities by contrast often have very good levels of public services. It makes little scientific sense to include both measures of ‘poor’ people and ‘poor’ access to services in a single national index as in the IMD 2000 since the higher weighting given to the service domain the more ‘rural’ areas will appear

deprived and conversely the higher the weightings given to the domains that measure 'poor' people the more the cities will appear deprived.

INDICES OF LOCAL DEPRIVATION (ILD) 2000

The ILD 2000 are measures of deprivation for all 8,414 wards in England. They describe a range of indicators classified in six main 'domains' of deprivation:

- ❑ Income
- ❑ Employment
- ❑ Health Deprivation and Disability
- ❑ Education, Skills and Training
- ❑ Housing
- ❑ Geographical Access to Services

In addition to these six domains, the 2000 ILD also contains a supplementary Child Poverty Index. The 2000 Index of Multiple Deprivation (IMD) combines the six main domains within a single deprivation score for each area.

The 2000 IMD uses up-to-date information from 33 indicators to describe deprivation at ward level (a detailed listing of the ILD 2000 indicators is presented in Appendix II). Most of the indicators can be updated regularly and so form the basis for a dynamic index. In addition to the Domain Indices, the overall ward level Index of Multiple Deprivation brings this substantial amount of knowledge and information together for the first time at a small geographical level.

Methodology

For the Income and Employment domains, the scores are presented as a simple rate, as these domains represent the percentage of the population affected by this type of deprivation. This is also the case with the Child Poverty Index.

The Health, Housing, Education and Access domains could not be combined in this way for two reasons:

- 1 The individual indicators may be measured in different ways. For example, in the Health Domain it would not be appropriate to simply add a standardised mortality ratio to a proportion of people receiving Attendance Allowance as these are on different metrics.
- 2 There might be overlap between indicators within a domain. A simple combination of these indicators could result in double counting.

Instead, these four domains were each combined using Factor Analysis (see Noble *et al*, 2000 for a detailed description of the statistical procedures used to generate the IMD). Factor Analysis is a statistical procedure which attempts to deal with both the problems outlined above¹.

¹ Factor analysis attempts to identify underlying variables, or factors, that explain the pattern of correlations within a set of observed variables. Factor analysis is often used in data reduction to identify a small number of factors that explain most of the variance observed in a much larger number of manifest variables.

Once the six separate domains scores for every ward have been calculated, it is then possible to combine these into an overall index. However, as with the indicators, the domains cannot be simply added because they are not all on the same scale. In order to combine the domains, they must first be standardised to a uniform metric by ranking the domain scores. Secondly, it is important to ensure that each domain is transformed to a common distribution. This is necessary because combining domains with different distributions can result in misleading results with some domains having unanticipated disproportionate effects on the overall index score.

From the outset, the DETR proposed that the Income and Employment Domains should carry more weight than the other domains (Noble *et al*, 2000). It was also proposed that the most robust domains should carry the most weight. This means that the contribution of each domain to the overall Index varies as follows:

□ Income	25%
□ Employment	25%
□ Health Deprivation and Disability	15%
□ Education, Skills and Training	15%
□ Geographical Access to Services	10%
□ Housing	10%

It must be stressed that neither the six domains or their weightings are the result of scientific analysis they are mainly reflections of the Government's priorities and data availability.

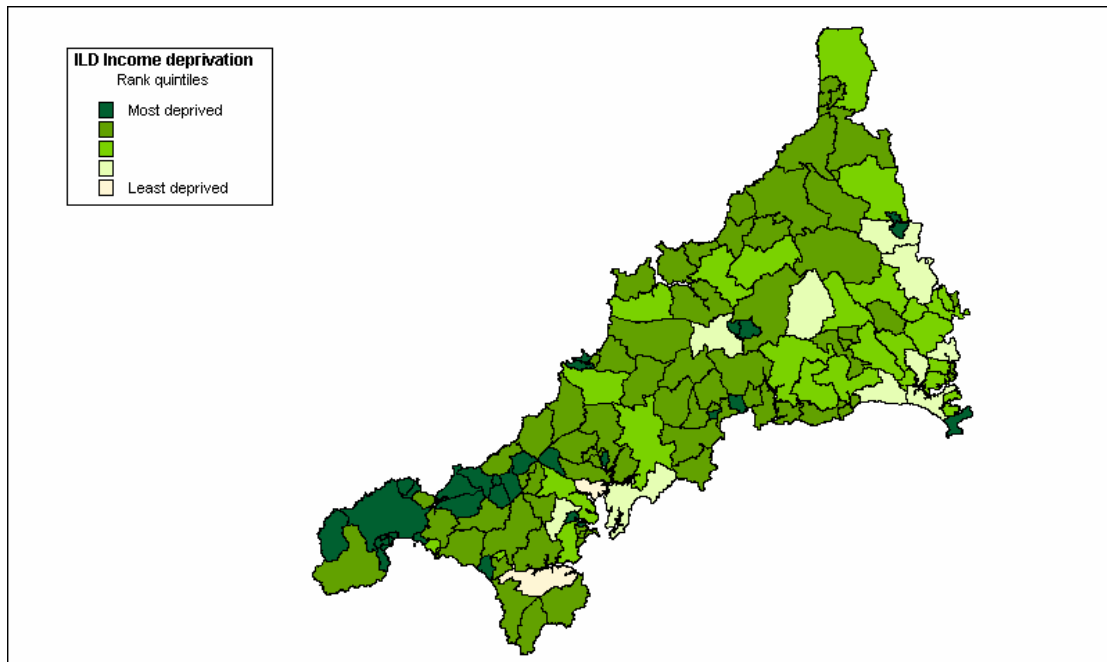
ILD 2000 DEPRIVATION IN CORNWALL

Income and Employment

The scores for the Income and Employment Domains (as well as Child Poverty and Multiple Deprivation) are rates. So, for example, if a ward scores 38.6 in the Income Domain, this means that 38.6% of the ward's population are Income Deprived. The same applies to the Employment Domain. In the 20% most income deprived Cornish wards at least 28% of the population is income deprived.

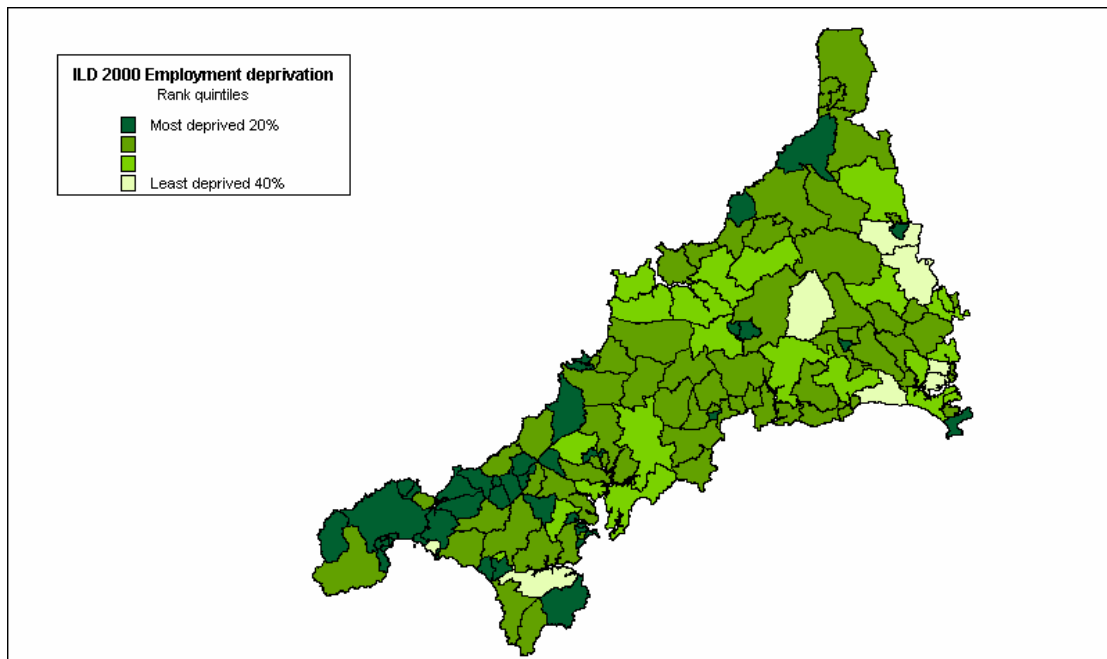
It is also instructive to explore how Cornwall compares with the rest of England. The 2000 ILD assigns a rank to each of the eight indices for all 8,414 wards in England. The most deprived ward for each index is given a rank of 1 and the least deprived ward is given a rank of 8,414. Figure 2.1 illustrates the distribution of Income Deprivation in Cornwall by showing the distribution of Cornish wards within the Income Deprivation ranking for English wards.

Figure 2.1: ILD Income Deprivation Rank, 2000 (quintiles)



As Figure 2.1 shows, most Cornish wards fall within the most deprived two fifths of the Income Deprivation ranking for England, although deprivation is most concentrated in West Cornwall (Kerrier and Penwith).

Figure 2.2: ILD Employment Deprivation Rank, 2000 (quintiles)



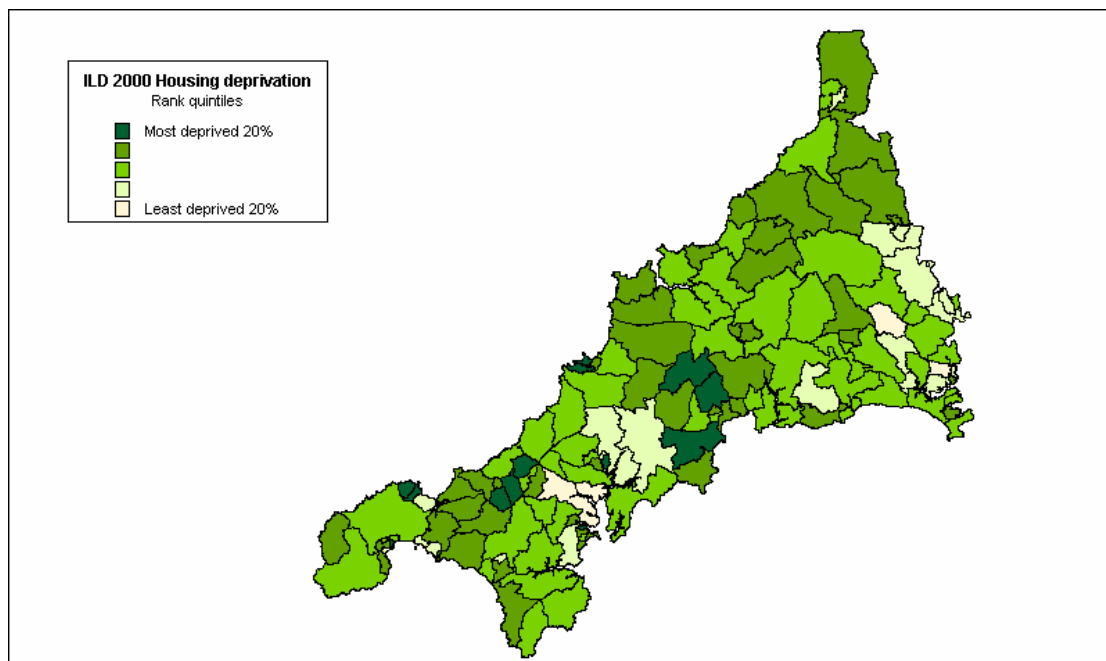
The spatial distribution of Employment Deprivation in Cornwall reveals a similar picture. Overall, in one fifth of wards, at least 15% of the population are classified by

the 2000 ILD as employment deprived. Again, high levels of employment deprivation are concentrated in the west of Cornwall, as Figure 2.2 (above) illustrates. As with income, Cornwall fares poorly compared with the rest of England on the Employment Deprivation Index. Indeed, none of the Cornish wards fell within the least deprived fifth of English wards on this measure and only eight within the next fifth of the distribution, as Figure 2.2 (above) shows.

Housing, Health and Education

Deprivation scores for the Housing, Health, Education and Access to Services Domains are not rates. Within each domain, the higher the score, the more deprived the ward². Housing deprivation in Cornwall is concentrated mainly in western Cornwall although the pattern of deprivation is somewhat more dispersed as Figure 2.3 shows:

Figure 2.3: ILD Housing Deprivation Rank, 2000 (quintiles)

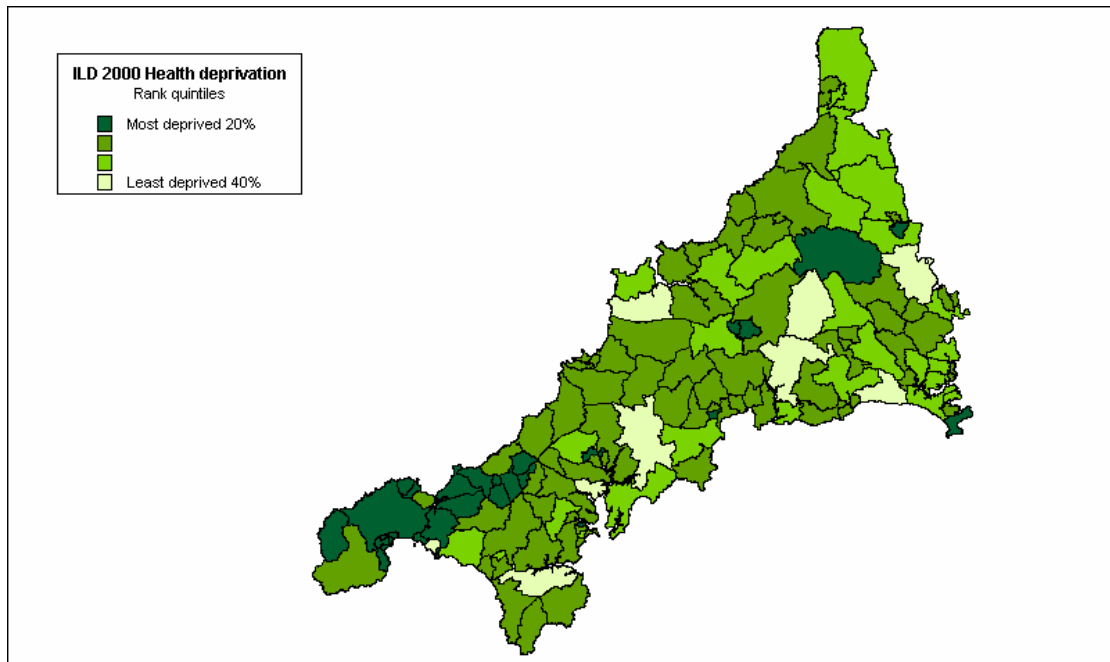


However, as with income and employment deprivation, few wards perform well in comparison with the rest of England, with only four wards falling within the least housing-deprived fifth of English wards.

Comparing health deprivation in Cornwall with the rest of England suggests an even more depressing picture. None of the Cornish wards are ranked within the least health-deprived fifth of English wards and the majority fall within the most deprived two fifths of the distribution. Again, the majority of the most severely health-deprived wards are in Kerrier and Penwith, as Figure 2.4 (overleaf) illustrates.

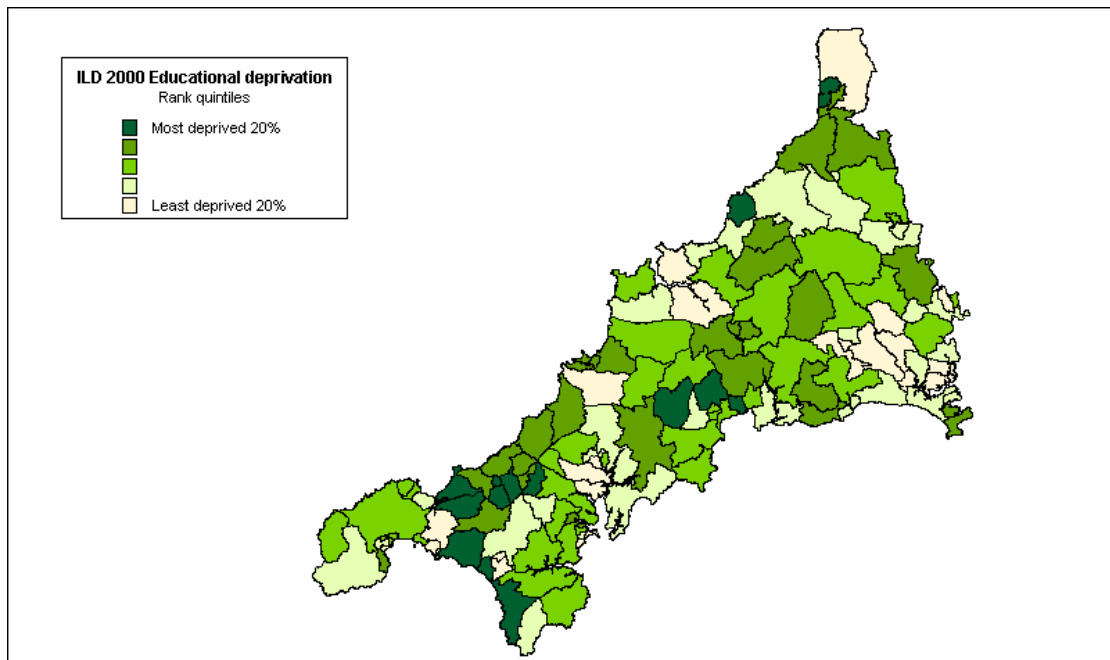
² However, the factor scores should not be compared between domains as they have different minimum and maximum values and ranges. To compare between domains, the ranks should be used.

Figure 2.4: ILD Health Deprivation Rank, 2000 (quintiles)



In terms of educational disadvantage, the picture is slightly more encouraging. As Figure 2.5 shows, educational deprivation within Cornwall is less spatially concentrated than for many other domains, although again some of the most deprived wards are in Kerrier:

Figure 2.5: ILD Educational Deprivation Rank, 2000 (quintiles)



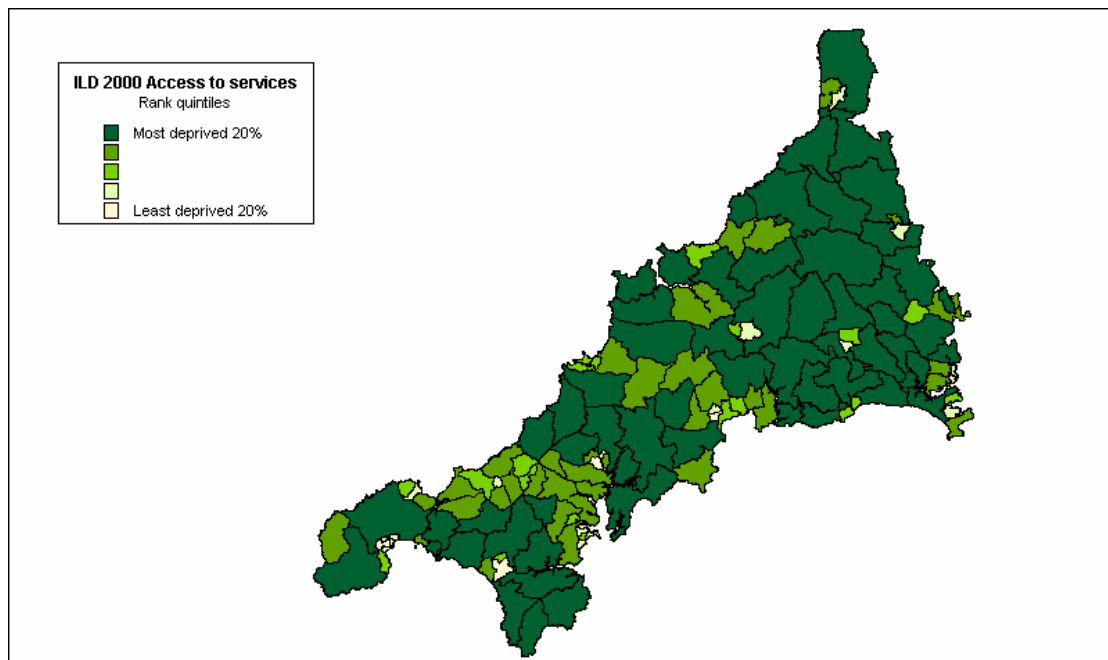
Overall and in comparison with the rest of England, the Cornish wards fare better in terms of educational deprivation than for economic (income, employment) and social (housing, health) deprivation. Fewer Cornish wards fall within the most deprived

fifth of the distribution for educational deprivation, although many of these are in Kerrier.

Access to Services

Perhaps unsurprisingly given its remote rural location, Cornwall as a whole fares poorly in terms of the accessibility of local services compared with the rest of England, as Figure 2.6 shows:

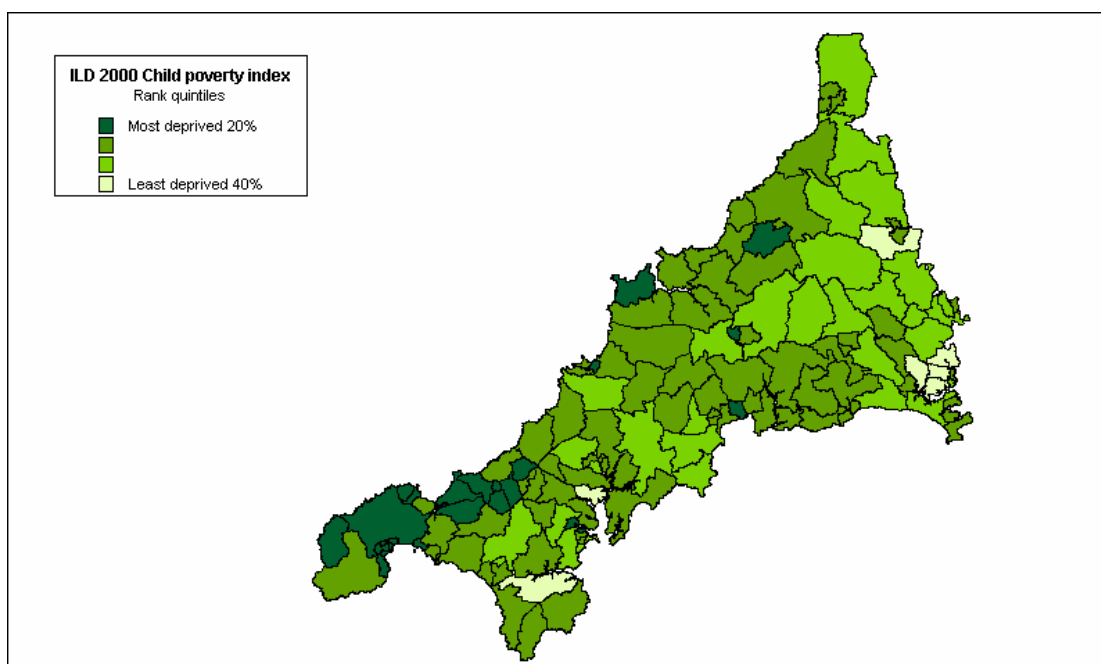
Figure 2.6: Access to Services Rank, 2000 (quintiles)



Child Poverty

As with the Income and Employment Indices, the scores for the Child Poverty Index are rates so the deprivation scores represent the percentage of children within each ward currently living in poverty.

Figure 2.7: Child Poverty Rank, 2000 (quintiles)

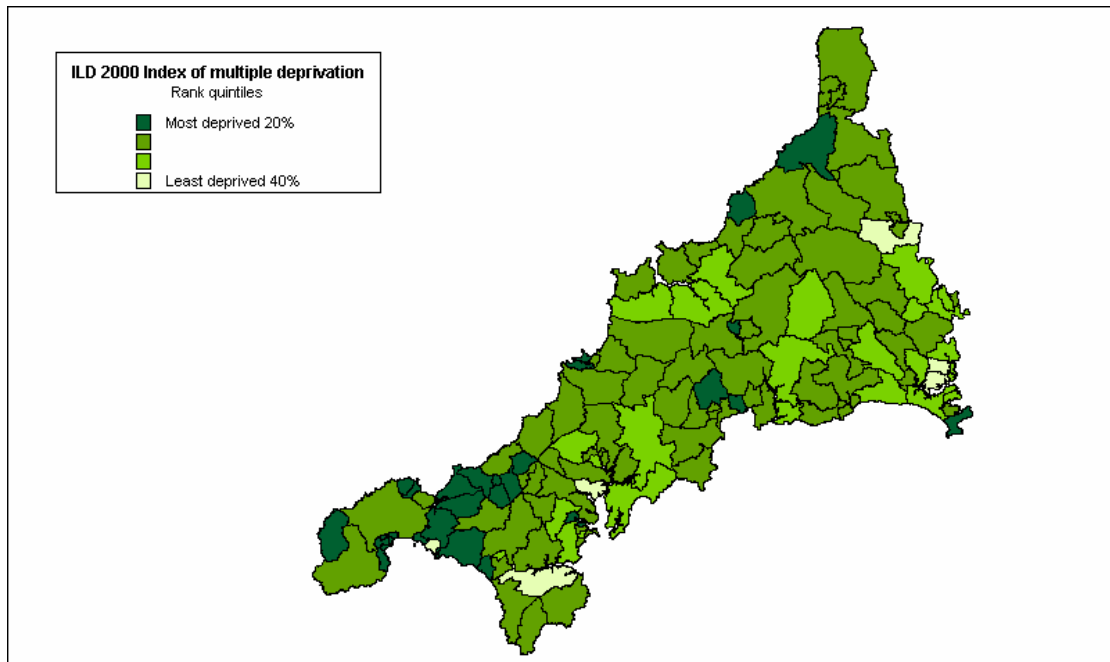


In one fifth of Cornish wards, more than 43% of children are currently living in poverty, according to this measure. As Figure 2.7 shows, the most severe concentrations of child poverty are in Kerrier and Penwith. However, as the figure also illustrates, child poverty is quite widespread throughout Cornwall in comparison with the rest of England. Only seven of the Cornish wards are ranked within the least deprived two fifths of the distribution for this indicator and the majority are within the most deprived two fifths of English wards for child poverty.

Multiple Deprivation

In 80% of Cornish wards, 20% of the population is experiencing multiple deprivation and, in more than one fifth, over a third of the population is experiencing multiple deprivation, according to this measure. Comparing the scores for Cornish wards with the rest of England reveals the extent of multiple deprivation in Cornwall. Only five of the 133 Cornish wards were amongst the least deprived two fifths of English wards and the great majority were amongst the most deprived two fifths for this measure, as Figure 2.8 (overleaf) shows. Within Cornwall multiple deprivation is again spatially concentrated within the districts of Kerrier and Penwith.

Figure 2.8: ILD Index of Multiple Deprivation Rank, 2000 (quintiles)



CRIME AND NEIGHBOURHOOD RENEWAL

Introduction

Crime and disorder have been acknowledged by central Government as an important feature of deprivation and a key theme within the context of neighbourhood renewal (SEU, 2001a). However, adequate data on crime was not available during the review of the 2000 ILD and this domain was therefore not included within the final indices (DETR, 2000b).

One of the reasons that a crime domain was not included in the final index of multiple deprivation was because of the detailed comments from Christina Pantazis, at the University of Bristol, who reviewed the problems of measurement of the crime domain proposals. Many commentators assume that all poor areas suffer from high levels of crime. However the relationship between crime, poverty and area is much more complicated than this. This section draws heavily on Christina's analysis with additional material on the situation in West Cornwall from the research team.

Crime, Poverty and Space

The interest in crime and poor localities has a long history. Henry Mayhew's (1862) comprehensive survey of Victorian London, provided detail on various 'rookeries' (slum criminal quarters); whilst concern with the rise of 'dangerous poor' led to a focus on various specific localities (see Morris 1957 for further details). Spatial analyses undertaken in the 1970s and 1980s revealed strong connections between the location of poverty and the occurrence of crime. Baldwin and Bottom (1976), in their classic Sheffield study, found a high concentration of offenders on deprived council estates, whilst Herbert (1977) also found links between poverty, social deprivation, substandard housing and crime. Following the inner-city riots in the 1980s, a number of commentators made links between deprivation and public disorder. Specifically, left realist criminologists such as Kinsey and Young (1986) put forward the theory of relative deprivation to explain rising rates of crime and disorder.

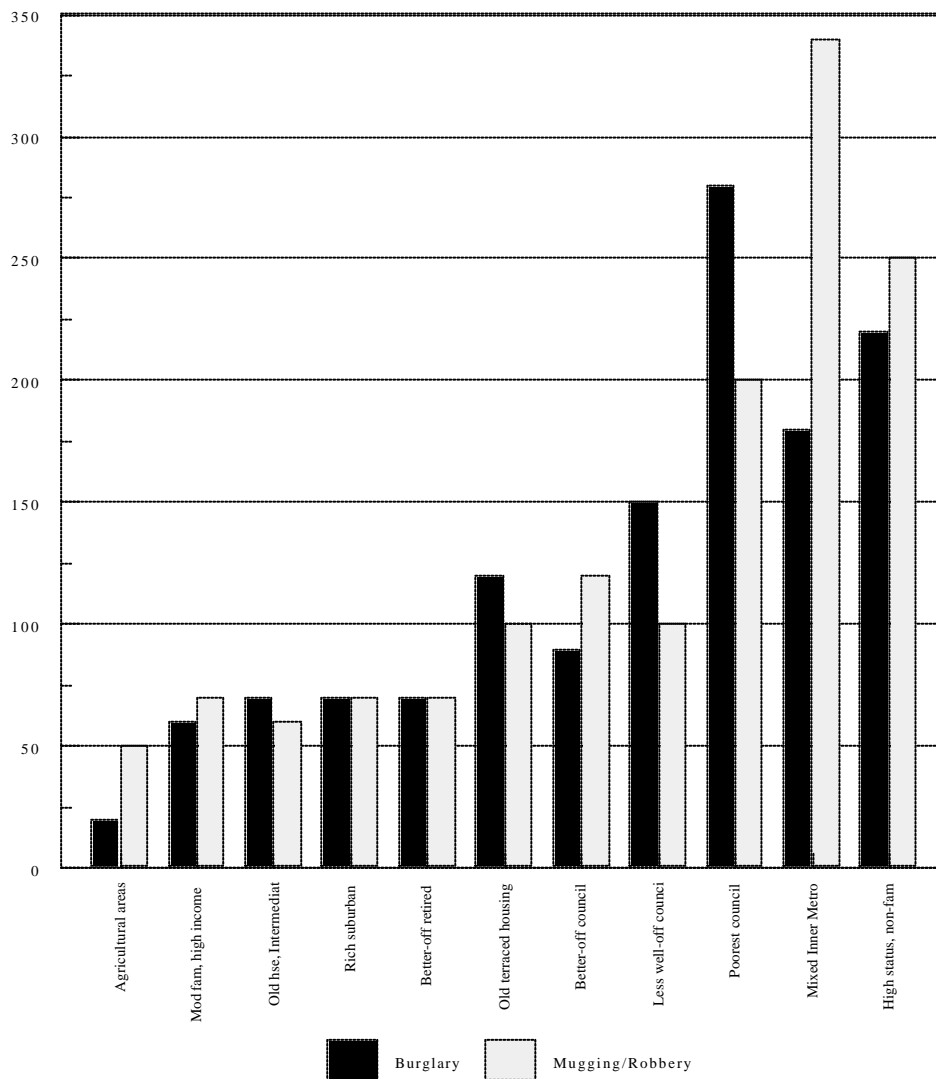
Poverty and Crime: some recent evidence

Recent research into crime and disadvantage in Merseyside, in north west England demonstrated that rates of recorded crime and repeat burglaries were significantly higher in the most disadvantaged areas (Hirshfield and Bowers, 1996). Furthermore, the level of social cohesion was thought to influence the recorded crime rate, so that disadvantaged areas lacking social cohesion experienced far greater levels of crime than similarly disadvantaged areas with higher levels of cohesion.

Home Office research confirms the link between crime and poor areas. Findings from the combined 1984, 1988 and 1992 British Crime Survey demonstrate the link between some poor areas and specific types of crime such as burglary and robbery (Mayhew and Maung 1992). Figure 8 shows the relative crime rates (national average = 100) for burglary and robbery, for residents of different ACORN neighbourhood

groups (CACI, 1992). Mixed inner metropolitan areas and less well off and poorest council estates suffer from relatively high crime rates. Mixed inner metropolitan areas have the highest rates of muggings and robbery, whilst the poorest council areas have the highest rates of burglary. These ACORN neighbourhoods are characterised by low-income households. On the other hand, 'high status, non-family' areas which are characterised by households with well above average incomes, also suffer from high crime rates, and 'agricultural' areas and 'older terraced housing', which typically contain many low-income households, have respectively very low and average burglary and robbery rates.

Figure 2.9 Indexed crime rates for combined 1984, 1988, and 1992 British Crime Survey by ACORN

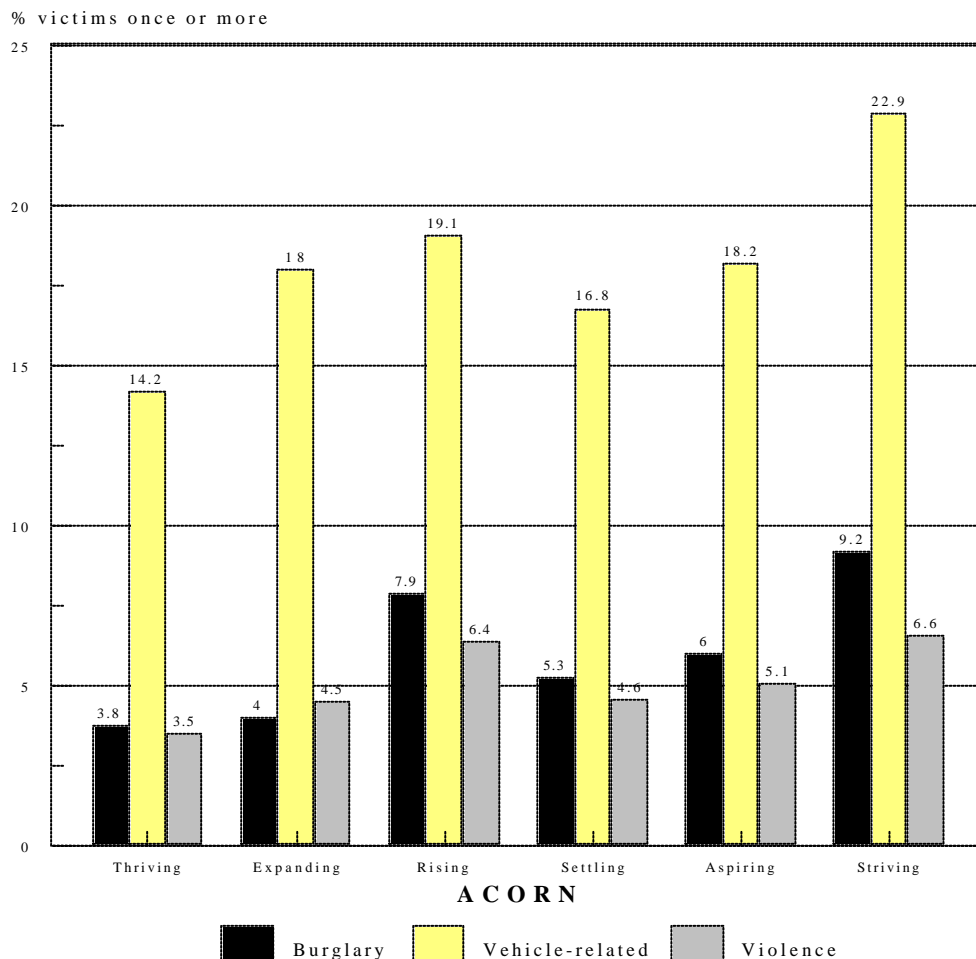


More recent evidence, based on the 1996 and 1998 British Crime Surveys, confirms the link between poor areas and crimes such as burglary, violence and vehicle-related theft (Mirrlees *et al.* 1998). Figure 2.10 shows the proportion of households and adults who have experienced burglary, vehicle-related theft and violence by ACORN neighbourhood groups (CACI, 1992). Striving areas (neighbourhoods with local

authority and multi-ethnic, low-income households) contain the highest proportion of victims in relation to all three types of crime.

Twenty three percent of people in striving areas experienced vehicle-related theft in the previous year. A further 9% and 7% had experienced burglary and violence, respectively. However, rates of victimisation are also high amongst the population in rising areas (neighbourhoods containing affluent urbanites; prosperous professionals in metropolitan areas; and better-off executives, in inner city areas). Thus, the proportions of victims in rising areas were 19%, 8% and 6% for vehicle-related crime, burglary and violence respectively. The lowest rates of crime exist in thriving areas – which typically contain a relatively higher proportion of elderly people.

Figure 2.10 Proportion of households/adults who are victims of burglary, vehicle-related theft and violence by ACORN (1996 & 1998 British Crime Survey)



Much of the Home Office research into poor areas has highlighted the extent of crime in areas containing large council estates (Hope, 1986). Hope and Hough (1988) attempted to tease *‘whether it is tenure itself which is associated with crime, or the ecological distribution of tenure types between different neighbourhoods’* (page 41).

Their re-analysis of the 1984 British Crime Survey demonstrated that it is the latter which is important: 'it is the interaction between individual tenure and the predominant tenure of the neighbourhood which is important, especially the concentration of council tenure in small residential areas, that is on 'estates' (Hope and Hough 1988: 41). Overall, council tenants had a greater chance of experiencing burglary compared with owner-occupiers. However, council tenants in non-council areas had a risk of burglary around the national average. The greater crime risk faced by council tenants was largely associated with neighbourhoods that were dominated by council housing. Thus, council tenants on estates were particularly vulnerable.

Even between estates which were predominantly council-owned, there was a considerable variation in risks of crime. Council tenants in the poorest council areas have a rate of burglary five times as that of tenants on the better-off estates and those in predominantly non-council areas (Table 2.1). At the same time residents of poor council housing areas were twice as likely to be very worried about becoming victims of burglary in the coming year, as those in those better off areas.

Table 2.1 Number of burglaries (including attempts) per 1,000 households by tenure ecology (1984 British Crime Survey)

	Burglaries per 1,000 households
All owner occupiers	34
All council tenants	55
Better-off council tenants	38
Average council tenants	66
Poor council tenants	190
Source: Hope and Hough (1988)	

Most studies linking crime with poor areas fail to address whether the main victims of crime are poor people. It is misleading to assume that poor people live in poor areas only, or that only poor people live in poor areas. By avoiding these assumptions we may ask the question who are the main victims of crime in poor areas? It may be, for example, that the victims of crime are disproportionately the 'better off' who live in poor areas. In other words, social scientists need to be aware of the pitfalls of the ecological fallacy (Robinson 1950; Baldwin, 1979). This refers to instances in which inappropriate inferences about relationships at the individual level are made on the basis of aggregate data obtained at the area level. In such situations, individuals are assumed to have the same characteristics of the areas in which they live. Many of the early ecology studies of juvenile delinquency fell into the trap of the ecological fallacy (Polk, 1957; Willie, 1967). In Britain, inappropriate conclusions were made about immigrants and their propensity to commit crime based on recorded crime data showing that crime was highest in areas with an immigrant population (Wallis and Maliphant, 1967). While there is limited discussion of the ecological fallacy in the criminological literature, there is a danger that current assumptions about poverty and crime are failing to take into account the full effects of the fallacy.

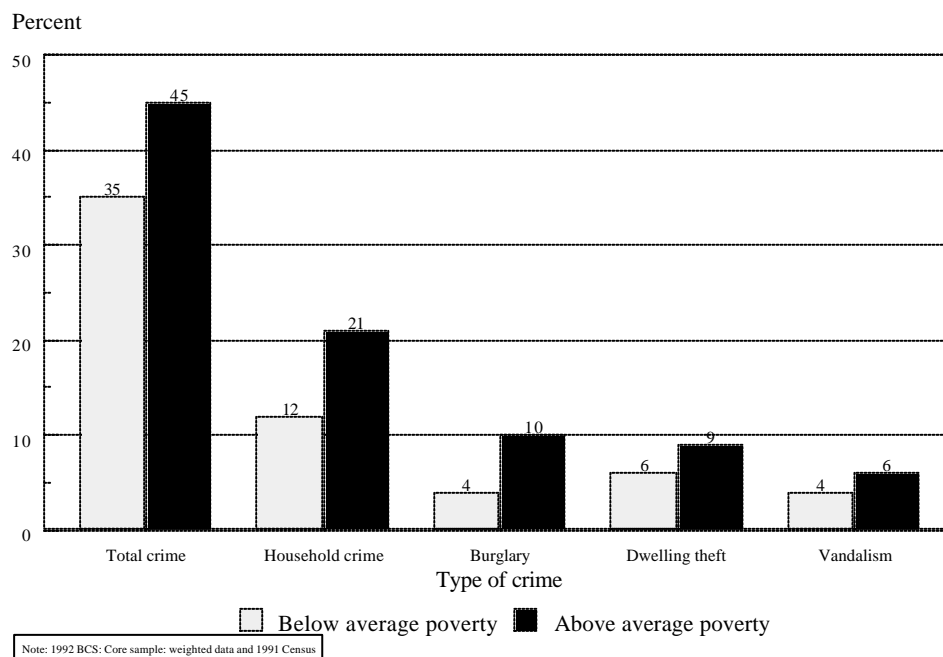
Poverty and crime: exploring the ecological fallacy

This next section examines the impact of poverty at the area level, and the extent to which there are differences in risks of victimisation between different income households using the 1992 British Crime Survey and the 1991 Census. It confirms the correlation between crime and area poverty, although the relationship between crime and poverty at the individual level is more ambiguous.

The 1991 Census was used to construct a deprivation index known as the Breadline Britain index in order to link it to the 1992 British Crime Survey. Any census based index will comprise variables that are, at best, proxy indicators of deprivation because none of the questions in the 1991 census was specifically designed to measure poverty or deprivation. The Breadline Britain Index is based upon the characteristics of households and individuals found to be living in poverty from the results of the 1990 Breadline Britain survey (Gordon, 1995; Gordon and Forrest 1995).

The findings confirm the importance of area poverty in determining risks of victimisation. Figure 2.11 demonstrates the risks of victimisation according to whether households are in areas of below average poverty or above average poverty (as defined by the Breadline Britain index using the 1991 Census). Forty-five percent of households in areas of above average poverty suffered victimisation in the previous year, compared with only 35% of those households in areas of below average poverty.

Figure 2.11 Percent of households experiencing total crime, household crime, burglary, theft around the dwelling and household vandalism in the previous year



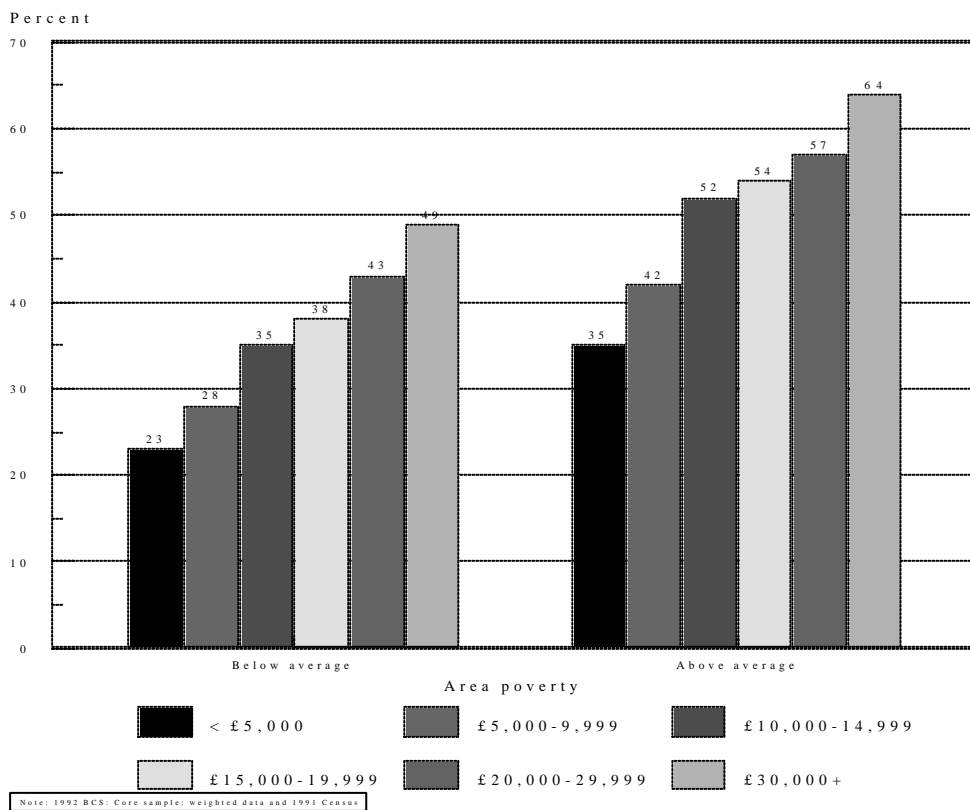
Sources: 1992 British Crime Survey, 1991 Census of Population

Households in poor areas are 1.8 times more likely to experience household crime (which includes burglary, theft around the dwelling, vandalism) compared with

households in areas with below average poverty levels. A similar pattern can be observed in relation to the separate components of household property crime. In comparison with households in areas of below average poverty, households in poor areas are 2.5 times more likely to be burgled and 1.5 times more likely to experience theft around the dwelling and vandalism.

Having established the correlation between area poverty and victimisation, Figure 2.12 illustrates the risks of experiencing total crime amongst different income households within poor area and non-poor areas. It shows that regardless of area poverty levels, there is a positive relationship between total victimisation and household income. In areas of below average poverty, the richest households experience the highest levels of victimisation (49%). They are more than twice as likely to experience some type of victimisation than households in the poorest households. There is a similarly positive relationship between household income and victimisation in areas with above average poverty. Sixty four percent of the richest households experience crime, compared with only 35% of the poorest households. Richer households are more likely to experience total victimisation because a large proportion of crime is vehicle-related, and vehicle ownership is higher amongst richer households than in poor households.

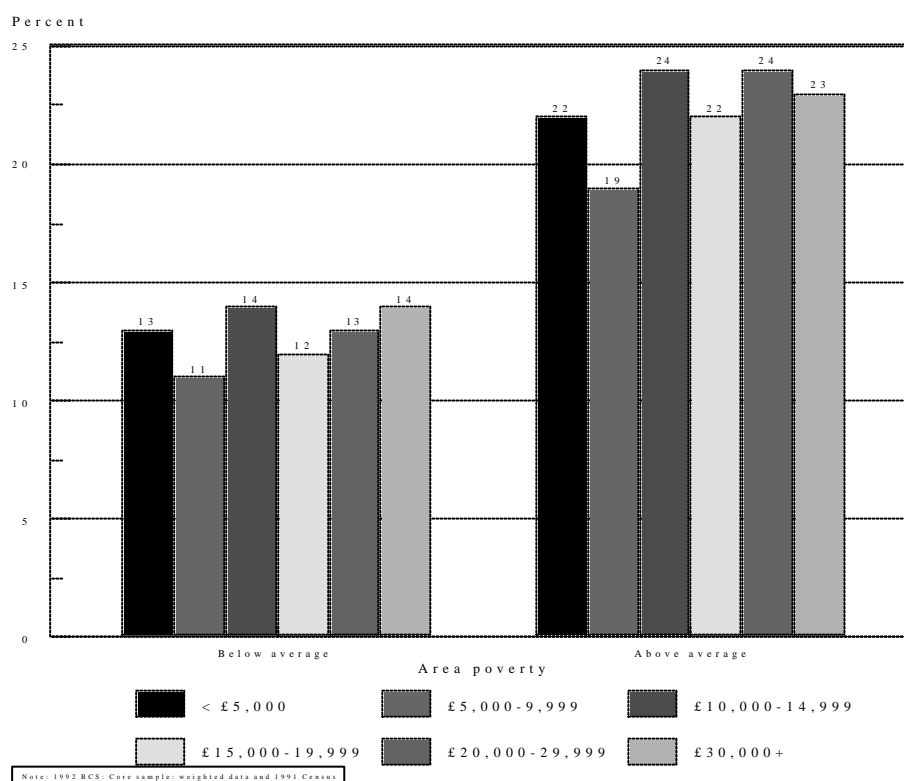
Figure 2.12 Percent of households experiencing total crime by gross annual income groups and area poverty (1992 British Crime Survey and 1991 Census).



The next figure (Figure 2.13) examines the relationship between the risk of experiencing household property crime according to household income group and

area poverty. Unlike the previous figure the positive relationship between victimisation and income is absent. Instead Figure 2.13 shows that regardless of area poverty levels, there is little difference in victimisation risks amongst the different income groups. In areas of below average poverty, victimisation risks range from 11% to 14%, whereas in areas of above average poverty, the victimisation risks for households are between 19% to 24%.

Figure 2.13 Percent of households experiencing household property crime by gross household income group and area poverty (1992 British Crime Survey and 1991 Census)



The conclusion that can be drawn from these analyses is that it is often 'richer' households in poorer areas that are victims of crime. If Neighbourhood Renewal projects in 'poor' areas are effective in reducing crime levels this will be of obvious benefit to the community as a whole but it may also be of greater benefit to the 'richer' households than the 'poorer' households. This should be borne in mind when establishing expenditure priorities.

Criminal Statistics: Notifiable Offences

The *Criminal Statistics England and Wales* are published annually, together with volumes of supplementary information. *The Criminal Statistics* provides detail on the number of offences recorded by the police, otherwise known as notifiable offences. This information is routinely available at police force area level and regional level. Information is also contained on offender-based data such as offenders found guilty or cautioned, otherwise known as 'known offenders'. Statistics on those found guilty and cautioned are presented by offence group and by police force area, with separate tables for indictable³ and summary offences⁴.

³ Those offences tried by judge and jury at the Crown Court.

⁴ Those offences tried at Magistrates' Courts.

Notifiable offences relate to those offences that the police are required to record. The *Criminal Statistics* provide information for different offence groupings, but not for other (non-notifiable) offences. This information is available for the 43 police force areas.

The Crime and Disorder Act of 1998 places a new statutory duty on local authorities and the police to produce an audit of crime and disorder, and to develop and implement a crime safety strategy. The result of this is that crime data is now being made available at a more localised level. For example, in Kerrier and Penwith data on notifiable crimes are available for police beat areas and this report has analysed the latest available data.

However there are a number of serious limitations with using the Crime and Disorder Audit data to measure crime at small area level.

Firstly, Police statistics are collected at 'beat' level but these areas do not necessarily relate to other administrative boundaries such as parishes or wards. Even higher level police boundaries do not necessarily correspond with district or other administrative boundaries.

There are other concerns relating to the recording and reporting of police data. Offences recorded by the police represent only a subset of total crime committed. According to the British Crime Survey there are four times as many crimes than the police record (Mirrlees-Black *et al.* 1998). This is mainly because only 44% of crimes are reported to the police. The majority of crimes are therefore not reported to the police. Reporting varies considerably by type of offence. Thefts of cars are most often reported: 97% were in 1997. Burglaries in which something was stolen were also reported (85%). Theft from the person and vandalism were the least likely offences to be reported: 35% and 26% respectively. The most common reason for not reporting crimes is that they are seen as too trivial, or involved too small a loss to warrant police attention. Unreported thefts from vehicles, no loss burglaries and vandalism were particularly likely to be seen as too trivial to report. For violence such as wounding and robbery, the most common reason for not reporting was that the victims felt that the matter was private or had dealt with it themselves.

Furthermore, not all reported crimes are recorded by the police. In 1997 the British Crime Survey estimated that about 54% of all reported crimes were recorded (Mirrlees-Black *et al.* 1998). Again the recording varies according to offence type. Thefts of cars and burglaries with loss were the most likely offences to be recorded, attempted vehicle related thefts and violence (wounding and robbery) the least likely. There are a number of reasons for this discrepancy, including police discretion. The police may not record a complaint because of their compliance with victims' wishes not to proceed. Other incidents may be regarded as too trivial to warrant formal action, or the police may feel the report is mistaken or disingenuous, or there is insufficient evidence to suggest a crime has been committed. However, the main reason for non-recording is due to the strict Home Office guidelines that Police Forces must follow. However, from April 2002 new guidelines for "ethical crime recording" should result in crimes being recorded as initially reported, which should lead to some improvements in the statistics.

Finally, considerable fluctuations over time in levels of recorded crime are evident when mapping crime at a very small spatial scale such as the ward or parish. This means that any given spatial distribution of crime levels even on an annual basis will be characterised by substantial 'random' changes.

Addressing these issues would ideally involve undertaking a large-scale local victimisation survey similar to the *British Crime Survey*. However, in the absence of such data all these problems should be acknowledged in interpreting available crime statistics. Therefore the following results on crime in West Cornwall need to be interpreted with caution when drafting neighbourhood renewal policies.

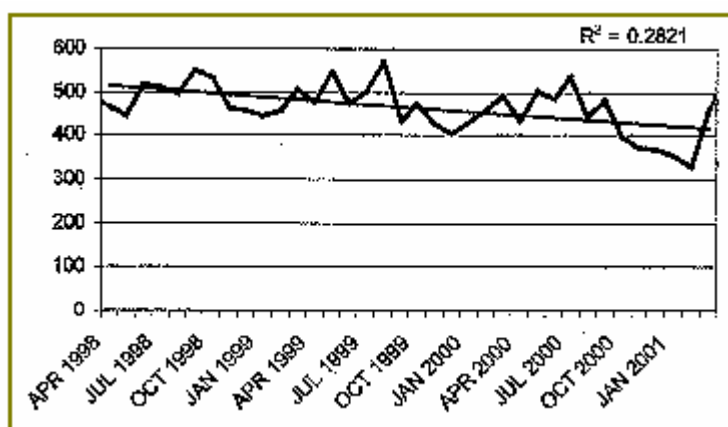
Methodology

In Kerrier, police beat areas are coterminous with parish boundaries. However, there is some divergence between police beats and parish boundaries in Penwith with only approximately two thirds of police beats being coterminous with parish boundaries, effectively constituting sub-divisions within parishes. In these cases and for the whole of Kerrier, it has thus been possible to aggregate total crime statistics to parish level. However, in some areas of Penwith, beat boundaries are unclear and do not correspond with parish boundaries (*ie* Ludgvan, Madron East, Madron West, Towednack). These areas are therefore excluded in the *spatial* analyses presented below.

Findings

During 2000-2001, 52,399 incidents were reported to police across Kerrier and Penwith. Of these, only a small proportion (18.3%) were considered by police to be sufficiently serious to be classified as crimes. In addition to these reported crimes, total crime also includes crimes identified through police investigations. Figures 2.14 and 2.15 below illustrate the frequency of total crimes for the period April 1998 to January 2001 for Kerrier and Penwith respectively.

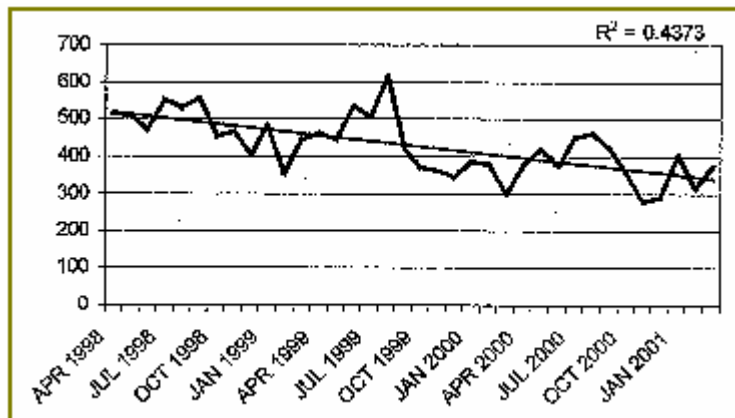
Figure 2.14: Total Crime in Kerrier, 1998 – 2001



Source: Kerrier Crime and Disorder Audit, 2001

In Kerrier, 5150 crimes were recorded during 2000-01 - or 56 crimes per 1,000 people (based upon CDRP population estimates). Figure 2.9 (above) is suggestive of a long-term decline in levels of total crime – from over 500 in April 1998 to just over 400 in January 2001. However, as noted above, and given the substantial fluctuations evident over this period, this general decline should be treated with caution.

Figure 2.15: Total Crime in Penwith, 1998 – 2001



Source: Penwith Crime and Disorder Audit, 2001

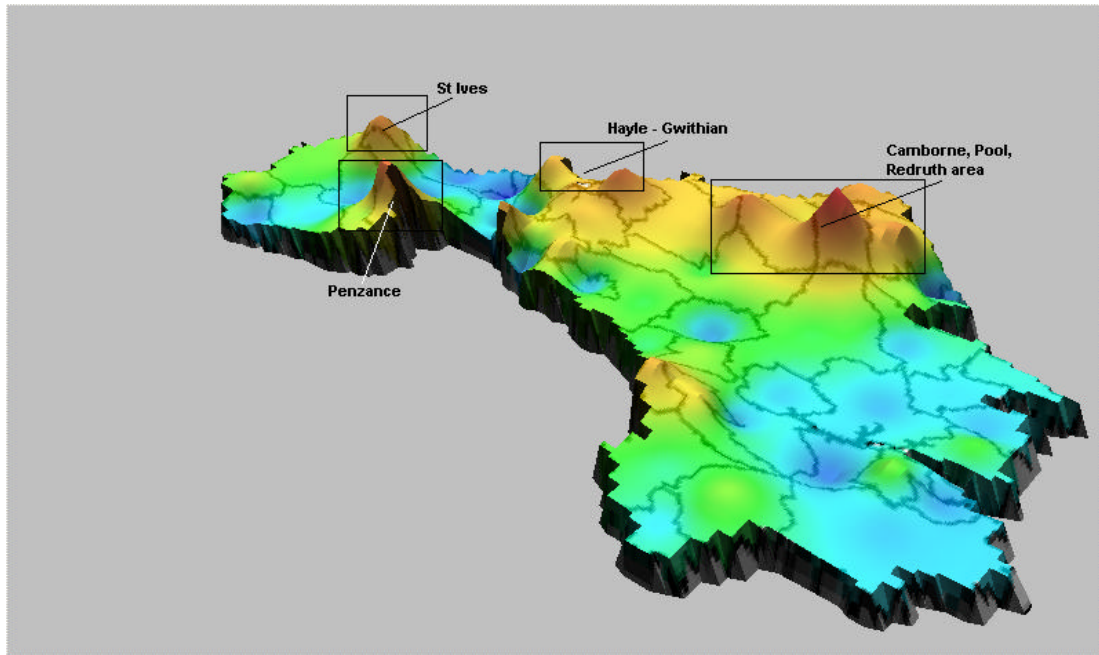
In Penwith, 4443 crimes were recorded during 2000-01 - or 74 crimes per 1,000 people (based upon CDRP population estimates). Figure 2.10 (above) is also indicative of a long-term decline in levels of total crime – from over 500 in April 1998 to 350 in January 2001. Again, however, this general decline should be treated with caution given the substantial fluctuations from month to month e.g. recorded crime was over 600 in September 1999 and then halved to 300 in April 2000 before rising again.

In general, the highest levels of recorded crime are concentrated in the more populous areas of West Cornwall (as would be expected). In Penwith, approximately one third of total recorded crime is concentrated in Penzance and Hayle and St Ives each account for around 13% of the recorded total in Penwith. Similarly, in Kerrier most crime occurs in the more densely populated areas, with Cambourne accounting for nearly one third (32%), and Redruth nearly one fifth (18%), of the recorded total for the district.

Controlling for the disparity in population between the more populous large towns in the region and smaller settlements in more remote rural areas has a levelling effect on the spatial distribution across west Cornwall. Figure 2.16 below shows total recorded crime per 1,000 population aggregated to parish level across west Cornwall⁵. On this basis police beats within the larger coastal towns of Penzance, St. Ives and Hayle, and the Camborne, Pool, Redruth area recorded higher numbers of recorded crimes per 1,000 population than rural areas although the disparity between urban and rural areas is considerably reduced. However, it must be noted that some of the victims of crime, (particularly in coastal towns) will have been tourists, so the adjustment that has been made for population size will overestimate the 'true' crime rates in the tourist areas.

⁵ The population weighting used here is based upon Office for National Statistics 1998 mid year population estimates.

Figure 2.16: Total recorded crime in Kerrier and Penwith by parish per 1,000 population, 2000/01⁶



Source: Kerrier and Penwith Crime and Disorder Audits, 2001

In 2000/01 the incidence of reported crime per 1,000 population in the parishes of Penzance (93), Camborne (84), Pool (112), and Hayle (90) was considerably higher than for those rural parishes with the lowest levels of recorded crime per 1,000 population over this period – namely St. Martin (11), Zennor (12), Perranuthnoe (14), Sancreed (15).

However, it must be strongly emphasised that the levels of recorded crime throughout west Cornwall remain considerably lower than in most other areas of England and Wales. Recorded crime statistics provided by the Home Office suggest that the incidence of crime in all the main categories is lower in rural areas than in urban areas⁷. Levels of recorded crime in 2001 in the rural areas of the South West were lower than in urban areas within the region, and levels of crime are generally lower than in other rural areas in England for almost all categories of crime, as Table 2.2, below, shows.

⁶ Excluding the following police beat areas: Ludgvan, Madron East, Madron West, Towednack beats.

⁷ Data is collected for Crime Reduction Partnership areas which are generally linked to Local Authority areas, although some may be larger and some smaller. The data cannot be compared directly to data from previous years which used Basic Command Units (BCU) to report since BCU boundaries do not all coincide with Local Authority ones.

Table 2.2: Recorded Offences per 1,000 population, year to March 2001

	South West rural	South West urban	All South West	All England rural	All England urban	England
Violence	6.19	10.74	8.21	6.54	13.18	11.29
Sexual offences	0.45	0.73	0.57	0.45	0.82	0.71
Robbery	0.22	1.53	0.8	0.31	2.53	1.89
Burglary	3.62	7.86	5.5	4.06	9.37	7.85
Theft of vehicle	2.11	6.36	4.0	2.91	7.85	6.45
Theft from vehicle	7.73	15.51	11.19	7.61	13.93	12.13

Source: Countryside Agency (2001b) and Home Office, 2001

To conclude, crime in the rural South West in general and in Kerrier and Penwith in particular is much less of a problem than in other parts of England and Wales. Crime rates in west Cornwall are some of the lowest in the UK.

ILD 2000 DEPRIVATION IN KERRIER AND PENWITH

As the 2000 DETR report suggests, deprivation is made up of separate dimensions, (or 'domains') of deprivation (DETR, 2000a). The extent and distribution of these different forms of deprivation varies between places at both local and regional levels. Table 2.3 summarises the pattern of deprivation at ward level across the six main domains of the 2000 ILD for West Cornwall.

Table 2.3: ILD Deprived Wards in Kerrier and Penwith, by Deprivation Domain, 2000

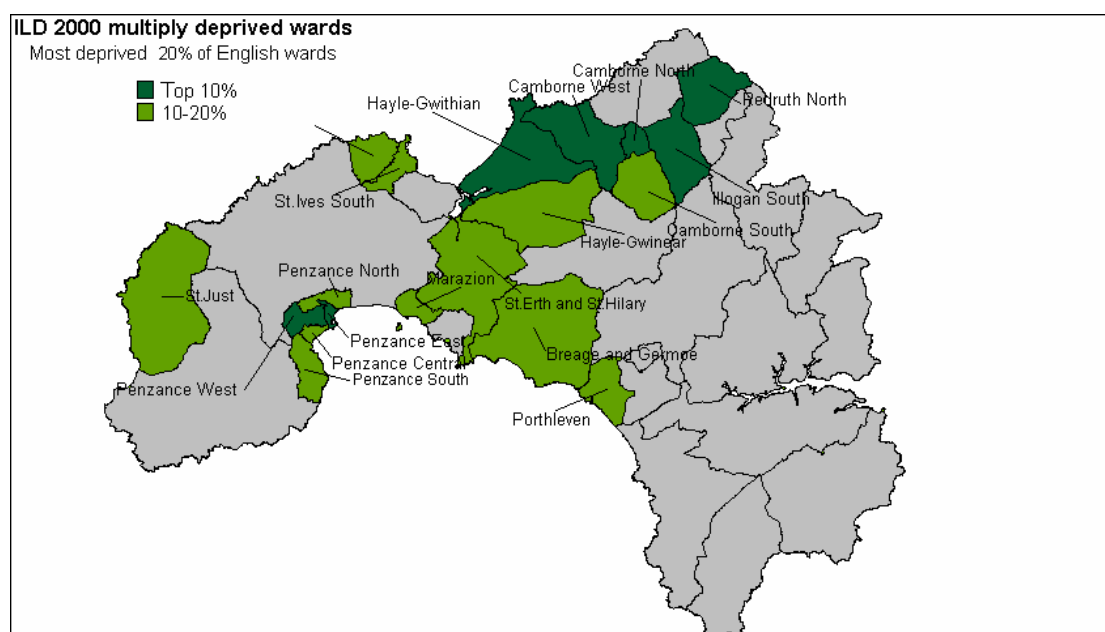
		Kerrier		Penwith	
		No	%	No	%
Income	<i>Most deprived 10%</i>	4	18	5	19
	<i>Most deprived 20%</i>	6	27	12	75
Employment	<i>Most deprived 10%</i>	3	14	8	50
	<i>Most deprived 20%</i>	10	46	13	81
Housing	<i>Most deprived 10%</i>	2	5	1	6
	<i>Most deprived 20%</i>	3	14	3	19
Health	<i>Most deprived 10%</i>	3	14	4	25
	<i>Most deprived 20%</i>	6	27	13	81
Education	<i>Most deprived 10%</i>	5	23	1	6
	<i>Most deprived 20%</i>	7	32	2	13
Services	<i>Most deprived 10%</i>	3	14	1	6
	<i>Most deprived 20%</i>	9	41	4	25

As Table 2.3 shows, income and employment deprivation are widespread in West Cornwall, with the great majority of wards in Penwith falling within the most

deprived 20% of English wards for both income and employment. Health deprivation is also a significant problem in West Cornwall - especially in Penwith - with four fifths (81%) of the wards within the 20% most health deprived English wards. Comparison with the other four Cornish Local Authorities again reveals the extent of deprivation in West Cornwall (see Appendix II).

Effective targeting of regeneration spending involves first identifying those areas experiencing the worst deprivation. A full listing of all the wards in Kerrier and Penwith experiencing deprivation, as measured by the DETR's Domains of Deprivation is given in Appendix II. Those wards ranked within the most deprived 20% of English wards on the DETR's Index of Multiple Deprivation (IMD) are illustrated in Figure 2.17:

Figure 2.17: IMD Deprived Wards in West Cornwall, 2000



In mid-1998, those wards falling within the 10% most IMD deprived English wards contained a resident population of 40,400 people and those within the most IMD deprived 20% contained 85,500 people. These figures represent 26.9% and 57.0%, respectively, of the resident population of Kerrier and Penwith according to 1998 mid-year population estimates. All seven of the west Cornish wards classified within the 10% most IMD deprived English wards have been identified by central Government as eligible for Neighbourhood Renewal funding.

SMALL AREA MEASURES OF DEPRIVATION

A primary task of this research was to identify the poorest neighbourhoods in West Cornwall at small area level e.g. using areas that are smaller than electoral wards. This required a considerable amount of new research work as no predominantly rural area in the country has yet successfully managed to do this within the neighbourhood renewal framework.

Methodology

The measurement of deprivation at the sub-ward level is constrained both by data limitations and by the appropriateness of deprivation indicators in a rural context. The 1991 Census provides the only reliable data at the sub-ward level for the whole of the UK. One of the main uses of Census statistics is in the construction of deprivation indices, since they form a key element in the allocation of local government and health resources. However, none of the 1991 Census questions was specifically designed to measure deprivation so any Census-based index will be comprised of variables which are at best proxy measures of deprivation (Payne *et al*, 1996). Moreover, since such indices need to be nationally representative, their construction tends to under-emphasise the distinctive needs of people living in remoter rural areas.

Seven indicators derived from the 1991 Census of Population were finally selected. Their appropriateness in the Cornish context is discussed in more detail below under **Findings**. These measures approximate to the six 'domains' of deprivation (plus the supplementary child poverty index) identified by the DETR and included within the ward level 2000 Index of Local Deprivation:

- Poverty rate (*Income*)⁸
- Child poverty rate (*Supplementary*)
- Unemployment rate (*Employment*)
- Percent of people aged 18 and over with no post school qualifications (*Education*)
- Limiting Long Term Illness/Disability rate (*Health*)
- Percent of households with no central heating (*Housing*)
- Percent of households with no car (*Access to services*)

Finally, on the basis of these measures, it was possible to construct a scale of multiple deprivation. First, the scores for each Enumeration District were ranked for each measure. Secondly and following the approach adopted by the DETR in the construction of the Index of Multiple Deprivation (IMD) at a ward level, the different 'domains' were weighted to broadly reflect the weightings used in the construction of the DETR's 2000 Index of Multiple Deprivation. This ensured that the final multiple deprivation index was constructed in a similar way to the 2000 IMD used to identify

⁸ The poverty and child poverty measures are derived from the 1990 *Breadline Britain* survey (Gordon and Pantazis, 1997) and applied to 1991 Census data (Gordon, 1995; Gordon and Loughran, 1997). These measures are considered to be amongst the most accurate available by many authors (eg Lee *et al*, 1995; Burrows and Rhodes, 1998; Saunders, 1998).

priority districts eligible for Neighbourhood Renewal funding. The following weighting was used:

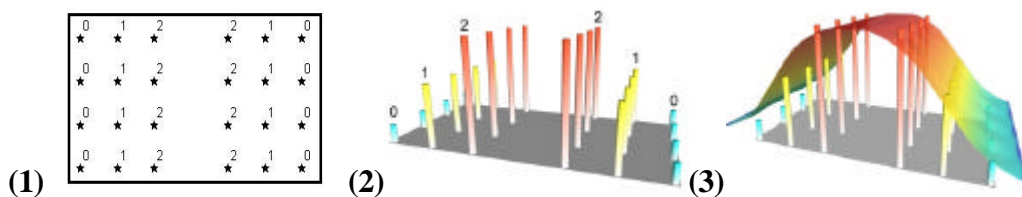
❑ Poverty	20%
❑ Child poverty	20%
❑ Unemployment	20%
❑ Standardised Illness Ratio	12%
❑ Post-school educational qualifications	12%
❑ Central heating	8%
❑ Access to a car	8%

Enumeration Districts were then ranked according to their score on this cumulative index and a cumulative population variable constructed. On this basis, it was possible to identify the most deprived Enumeration Districts for any population threshold (in this case the 33% level). It was decided by the steering committee that the research team should identify the poorest areas in West Cornwall in which a third of the population lived. These would represent the primary target areas for receiving Neighbourhood Renewal funding.

Mapping Deprivation at the Sub-ward Level

For each of the *individual* indicators described below, an interpolation procedure known as Inverse Distance Weighting (IDW) has been used to map the distribution of deprivation in West Cornwall. There are many advantages to taking spatial data beyond a purely descriptive display method, such as the thematic mapping of points using colours (*ie* a choropleth map). Deprivation is not constrained by Census boundaries, that is, deprivation usually does not dramatically fall from high levels on one side of an Enumeration District boundary to low levels on the other. IDW interpolation ‘smoothes’ the gradations in levels of deprivation across Enumeration Districts to generate a more realistic model of deprivation. It also enables a spatial analysis of change over time in socio-economic data.

Interpolation is a mathematical process used to estimate values between known point observations. The IDW procedure converts point data into continuous grid layers (a trend surface) by calculating a value for each grid node by examining surrounding data points lying within a defined search radius. The node value is calculated by averaging the weighted sum of all the points, the weight being a function of inverse distance. Thus, data points that lie progressively farther from the node influence the computed value far less than those lying closer to the node. A technical account of IDW interpolation is given in Appendix II.



In illustration (1) above, 24 points are arranged regularly with attribute values ranging from 0 to 2. Any numeric attribute can be represented in 3D form, as depicted in the second illustration. This image is actually a rendered grid generated using IDW interpolation by sampling only one data point and using a very small display radius equal to the width of a single column. However, grids are usually used to build a *continuous* surface that connects data points in space, effectively removing gaps in the representation of data. IDW achieves this by generating a moving average or 'smoothing' of the data, as shown in illustration (3).

This kind of trend surface methodology is made necessary because of **Spatial Autocorrelation**. Areas next to each other are likely to be more similar than areas further away. Spatial autocorrelation can be defined as the clustering pattern in the spatial distribution of a variable which is due to the very fact that the occurrences are physically close together, that is, that they are in geographical proximity. They are not independent of each other, but are linked. The data are spatially dependent.

Spatial autocorrelation is widespread: rich people move to areas where other rich people live; disease can spread from one neighbour to another, etc. If the values in a poverty or health cluster are more alike than would be due to random processes, there exists a positive autocorrelation; if they are less alike than would occur through random processes, there exists a negative autocorrelation.

Findings

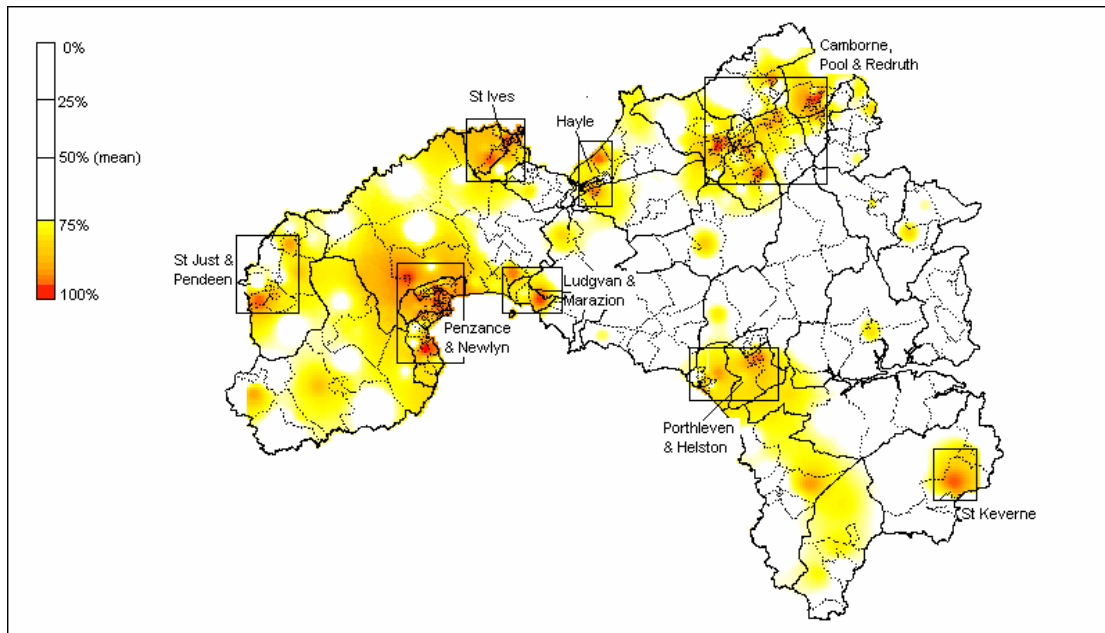
Poverty

As the 2000 Indices of Local Deprivation suggest high levels of poverty are endemic across much of west Cornwall. Figure 2.18 (below) shows the distribution of scores for each Enumeration District in west Cornwall for the poverty index. For each Enumeration District the score represents the percentage of households living in poverty as defined by the *Breadline Britain in the 1990s Survey*⁹ (Gordon and Pantazis, 1997) and applied to the 1991 Census data (see Gordon, 1995). *The areas highlighted in Figures 2.18 to 2.24 represent the upper quartile of scores for each of the deprivation indicators selected.*

As Figure 2.18 shows poverty in west Cornwall is concentrated in much of west Penwith (especially the coastal towns of Penzance and Newlyn, St. Ives, St. Just, and Hayle), as well as in the Camborne, Pool and Redruth area, and the Lizard peninsula.

⁹ In the *Breadline Britain in the 1990s* survey poverty was defined scientifically using the consensual method e.g. in order to be poor a household had to have both a low income and a standard of living that was below the minimum acceptable to the majority of the British population.

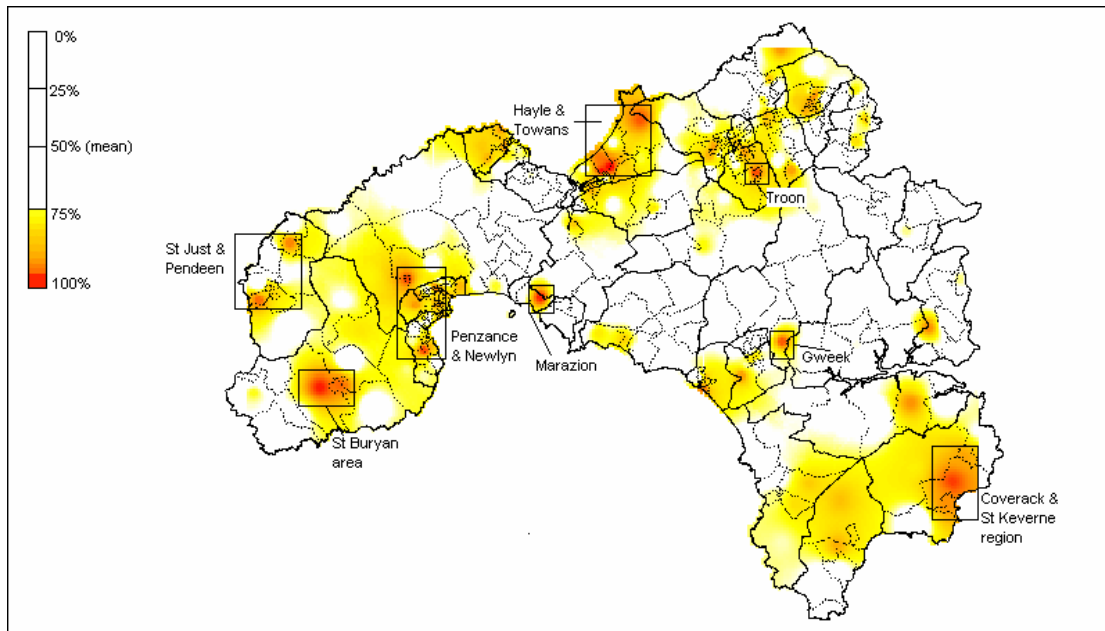
Figure 2.18: Poverty rate (%) in Kerrier and Penwith by ED (most deprived quartile)



Source: 1991 Census of Population

The child poverty index measures the percentage of poor households with children based on the poverty index derived from the *Breadline Britain in the 1990s Survey* and applied to the 1991 Census data. As such the pattern is slightly different to the overall poverty index described in Figure 2.18 (above). As Figure 2.19 shows, the distribution of child poverty in west Cornwall is slightly more spatially concentrated than for poverty amongst the adult population, with significant clusters of child poverty in some of the more remote rural settlements such as the St. Buryan area, and in St. Keverne and the Lizard peninsula. However, the larger towns (Penzance and Newlyn, Camborne, Pool and Redruth, Hayle, and St. Just) are also characterised by high rates of child poverty.

Figure 2.19: Child Poverty Rate (%) in Kerrier and Penwith by ED (most deprived quartile)



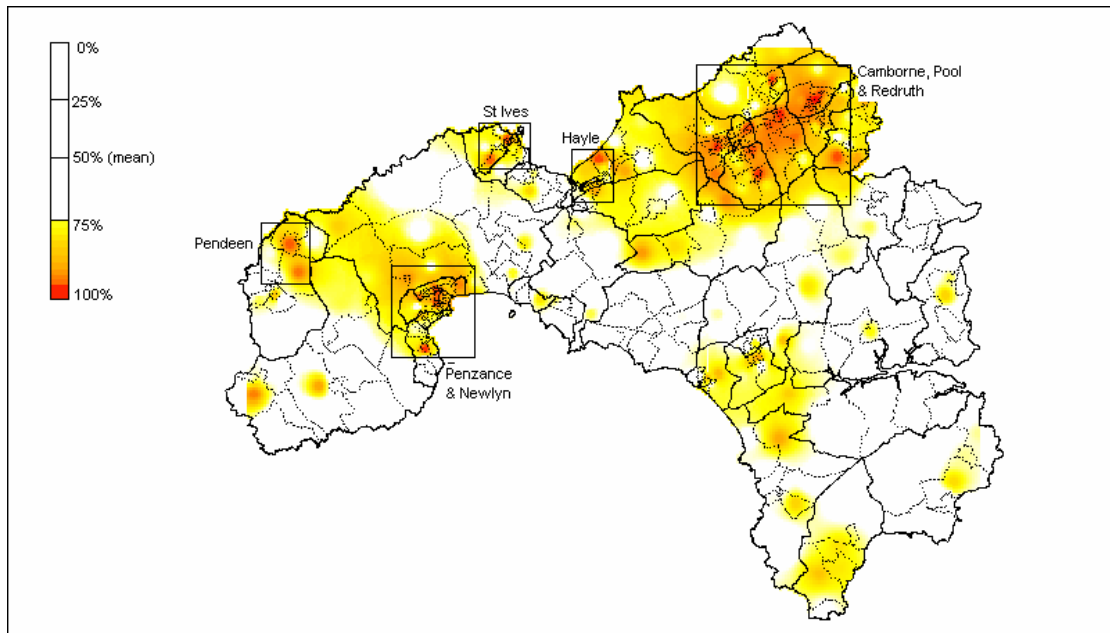
Source: 1991 Census of Population

Health

The Standardised Illness Ratio (SIR) measures the incidence of illness (morbidity) standardised by age and sex, where a score of 100 represents the average health of the population of England and Wales. Thus a score of 167 across an Enumeration District means that residents are 67% more likely to experience a *“long term illness, health problem or handicap which limits their daily activities or the work they can do”* compared with the average for England & Wales. Conversely, a score of 50 means that residents are less likely to experience illness compared with the average for England & Wales.

As Figure 2.20 (below) shows, ill health in west Cornwall is concentrated mainly in north Kerrier. The Enumeration Districts in west Cornwall with the highest scores (ie. within the upper quartile of the distribution) are predominantly in the Camborne, Pool, Redruth area. Smaller pockets of ill health are also evident in the large coastal towns of Penzance and Newlyn, St. Ives, and Hayle, as well as in the Pendeen area, and the Lizard peninsula.

Figure 2.20: Standardised Illness Ratio in Kerrier and Penwith by ED (most deprived quartile)

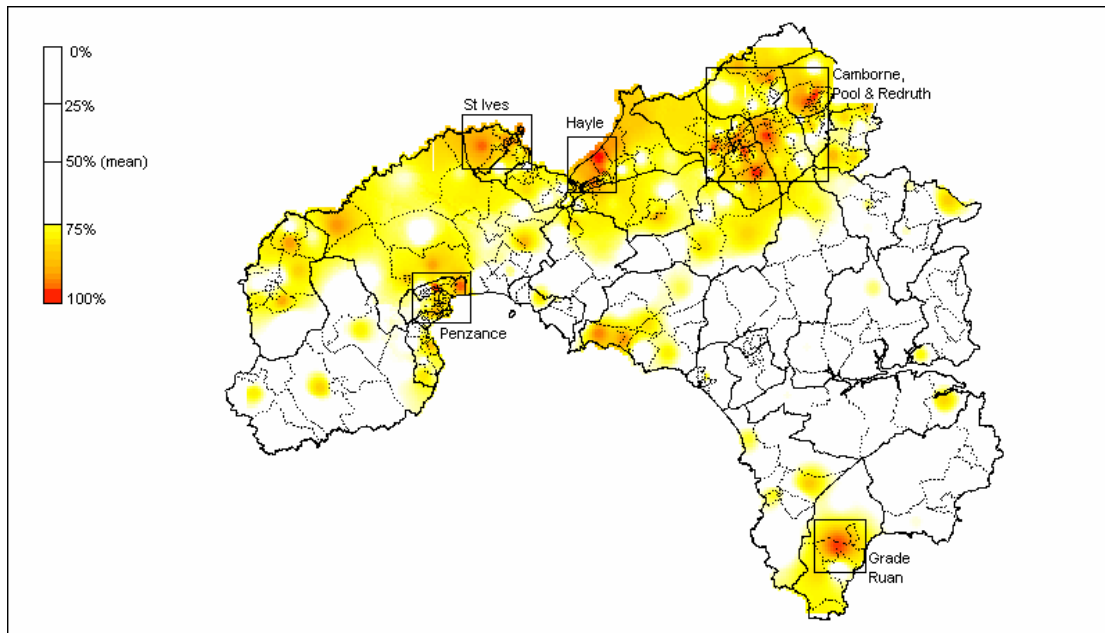


Source: 1991 Census of Population

Unemployment

The Census indicator of unemployment is a more accurate measure of worklessness than Claimant Count estimates since the latter only includes economically active individuals in receipt of unemployment-related benefits. According to this measure the most substantial areas of worklessness are in north Penwith and north Kerrier as a whole, as well as in Penzance and southern Lizard, as Figure 2.21 (below) shows. Unemployment is a particular problem in the larger towns (St. Ives, Hayle, Camborne, Pool and Redruth).

Figure 2.21: Unemployment Rate (%) in Kerrier and Penwith by ED (most deprived quartile)



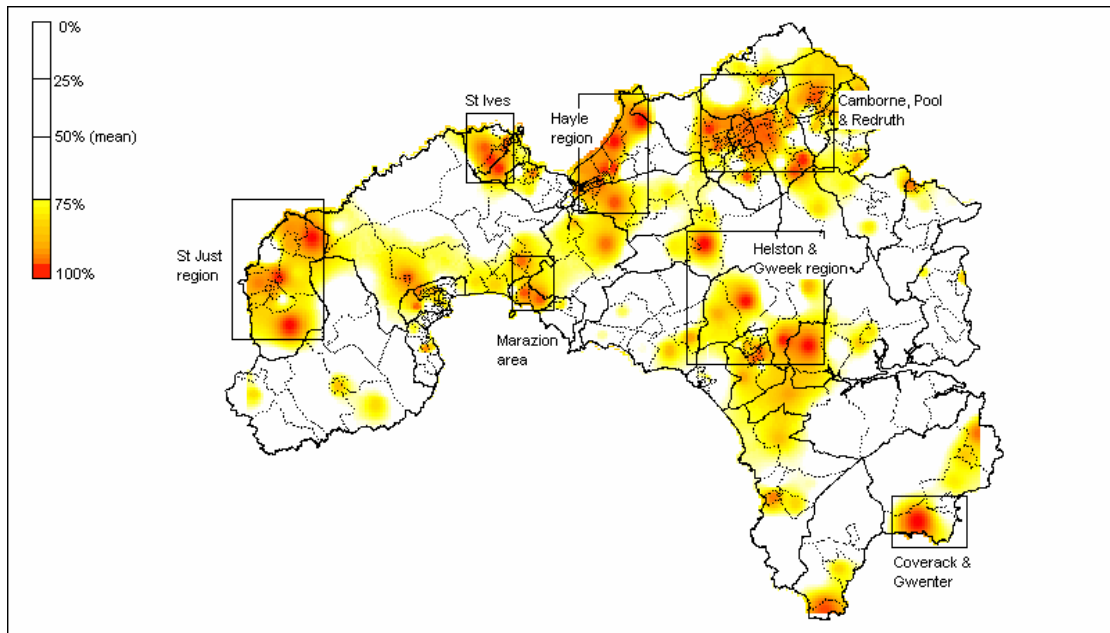
Source: 1991 Census of Population

Education

The distribution of educational disadvantage, as measured by the percentage of individuals without post-school qualifications (degrees, professional and vocational qualifications), is very different than for poverty, child poverty, and unemployment. The distribution of individuals with no post-school educational qualifications is much more dispersed, with significant clusters in many of the smaller and more remote rural settlements across Penwith and especially Kerrier, as Figure 2.22 (below) indicates.

This pattern partly reflects the different age profile of rural areas in comparison with the larger towns. Demographic change means that rural communities are increasingly characterised by greater concentrations of older residents compared with larger towns. Since educational attainment also reflects patterns of generational change it is to be expected that educational attainment would be relatively low in many isolated rural communities with ageing populations. However many of the Enumeration Districts in west Cornwall with the highest scores for educational under-achievement are also concentrated in the larger coastal towns of St. Ives, St. Just, and Hayle, as well as across the Camborne, Pool and Redruth area.

Figure 2.22: Individuals with No Post-School Qualifications (%) in Kerrier and Penwith by ED, (most deprived quartile)

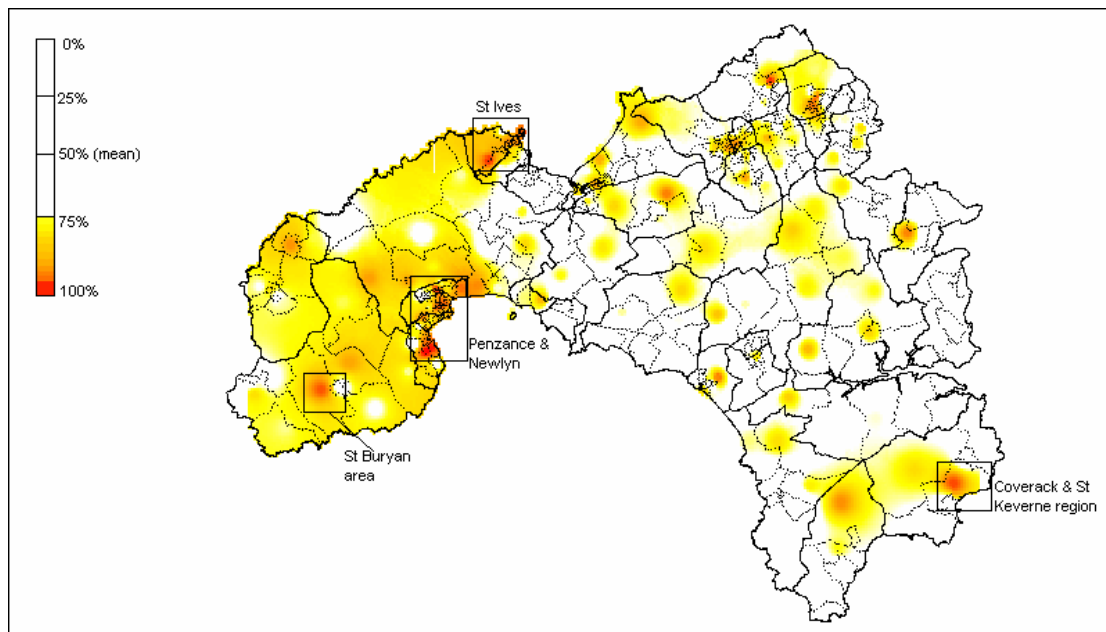


Source: 1991 Census of Population

Housing

The distribution of households lacking central heating in west Cornwall again differs significantly from the key indicators described above - namely poverty, child poverty, and unemployment. The Enumeration Districts with the greatest proportion of households lacking this basic amenity are concentrated predominantly in west Penwith and especially in the Penzance and Newlyn area, as well as in St. Ives, and St. Buryan.

Figure 2.23: Households with No Central Heating (%) in Kerrier and Penwith by ED (most deprived quartile)

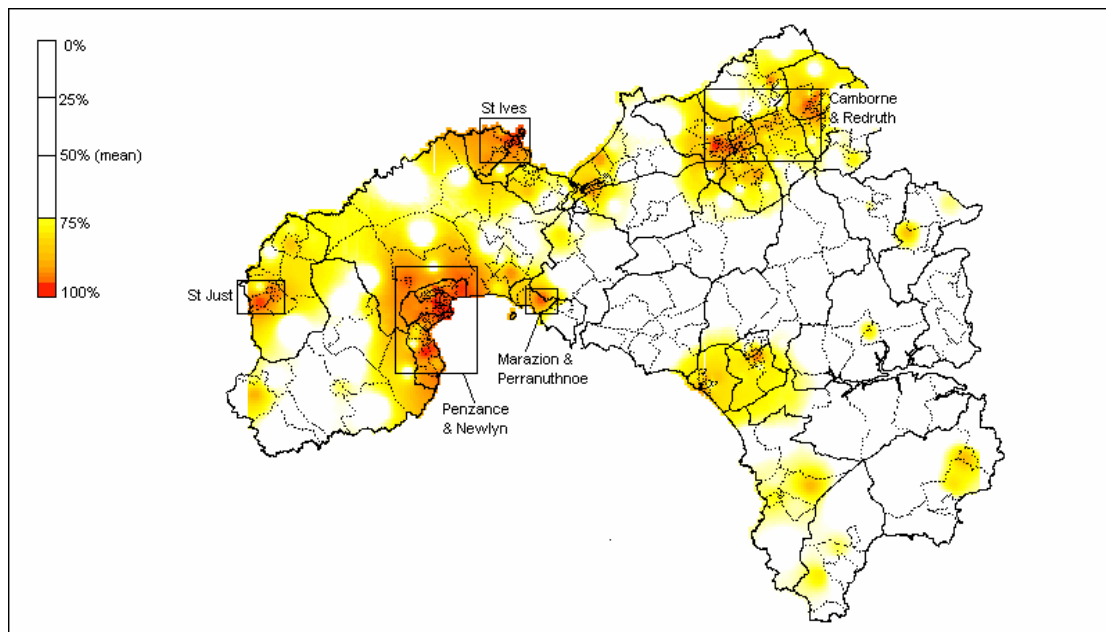


Source: 1991 Census of Population

Access to Services

Access to a car is a key dimension of access to community services in rural areas, especially since historical and new data reveal an overall trend of declining geographical availability for some essential services in many rural areas (Countryside Agency, 2001 – see *Chapter 4*). Strikingly, the percentage of households in west Cornwall without access to a car closely reflects the distribution of poverty amongst the adult population (see Figure 2.18). As Figure 2.24 (below) shows, levels of access to a car are lowest in the larger towns (St. Ives, St. Just, Penzance and Newlyn, Hayle, and Camborne, Pool, and Redruth). However, there are also substantial rural areas (eg. west Penwith, the Lizard peninsula) where lack of access to a car is also a significant problem, especially given the remote rural location of these settlements.

Figure 2.24: Households with No Access to a Car (%) in Kerrier and Penwith by ED (most deprived quartile)



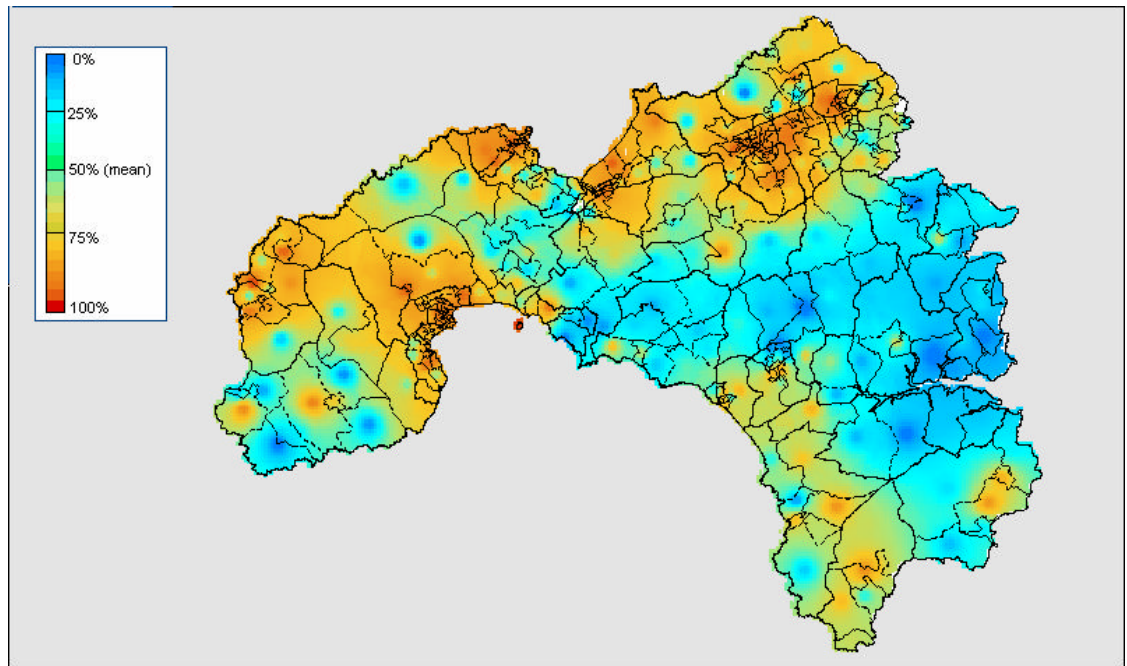
Source: 1991 Census of Population

IDENTIFYING PRIORITY AREAS

Using the methodology described above it was then possible to map deprivation at a small area level using a cumulative index of deprivation which combines the Census indicators described above, as illustrated in Figure 2.25 (below). The most significant concentrations of deprivation produced by this procedure are in the larger settlements – chiefly Camborne, Pool, Redruth, St. Ives, Penzance, and St. Just. However, mapping deprivation at Enumeration District level also reveals smaller pockets of deprivation in rural settlements such as the Lizard area¹⁰, Pendeen, and the Land's End area

¹⁰ It should be noted that the Lizard area may well contain a greater numbers of areas of need than these statistics reveal. The highly seasonal nature of work on the Lizard (particularly flower picking and tourism) combined with the influence of the nearby large RAF base and the high number of second homes may obscure the 'true' extent of need in statistical analysis.

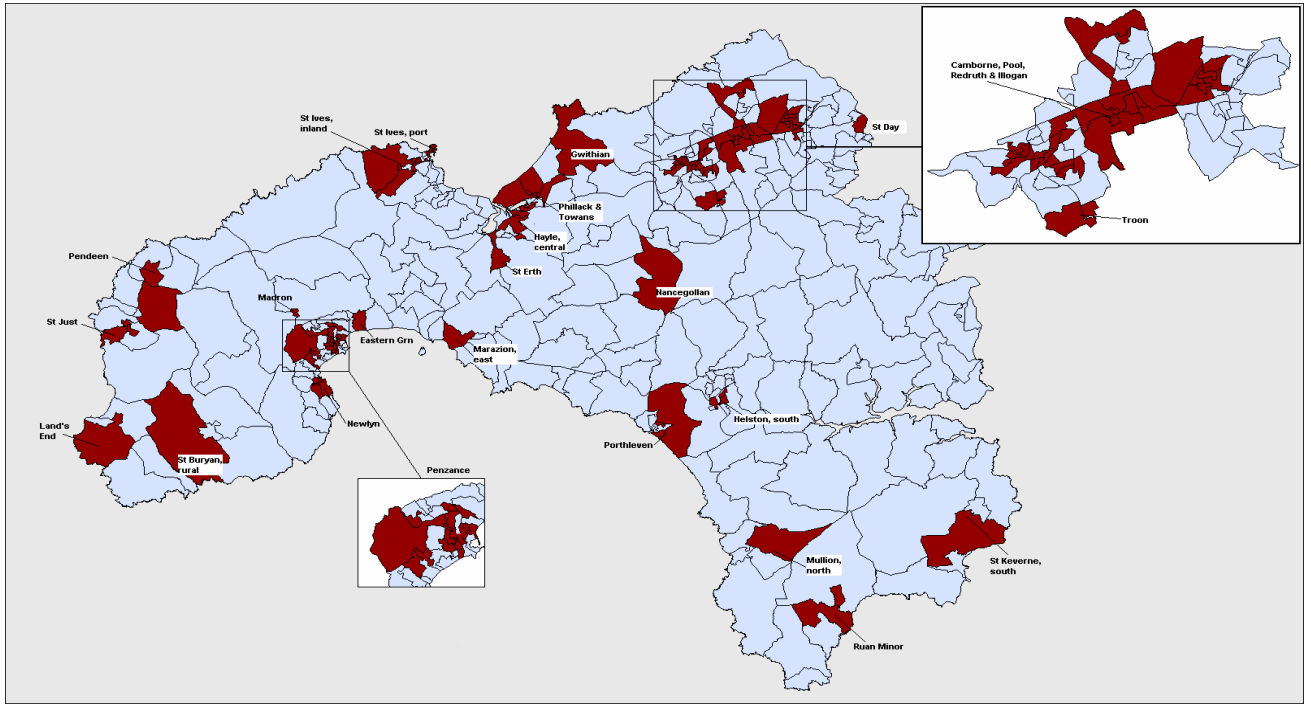
Figure 2.25: Cumulative index of deprivation in west Cornwall (IDW method), 1991 Census



Source: 1991 Census of Population

Ranking Enumeration Districts according to their score on this cumulative index meant it was then possible to identify the most deprived Enumeration Districts for any population threshold (in this case the 33% level as determined by the West Cornwall LSP). The priority areas for NRF funding as determined by this procedure are shown in Figure 2.26, below. *A larger scale map of the priority areas with area labels is included in Appendix II.* The priority areas are mainly concentrated in the Camborne, Pool, Redruth area, Penzance area, St Ives area, Hayle area, Newlyn area, Helston area, St Just area, Porthleven area, Hayle & Towans, Troon area and Pendeen areas (see Appendix II for details). However, there is also some evidence of priority need in the Lizard area.

Figure 2.26: Priority Areas at 33% Population Threshold, 1991 Census



POOR CONSUMERS AND SOCIAL ENTREPRENEURS

Market research companies have created a multi-million (billion?) pound geo-demographics industry in Britain which attempts to classify small areas on the basis of the consumer behaviour of the people who live there. This kind of commercial information can be useful to a scientific study in two respects:

1. Geo-demographics data can be used to help validate the measures of deprivation used in this study by examining the ‘fit’ between this index and the market research data.
2. Market researchers tend to be much more interested in identifying “rich” and “middle-class” areas than most academics (for the obvious commercial reasons) so these data may be useful in identifying where the highest concentrations of potential “social entrepreneurs” live.

One such data source is the Experian database of household and neighbourhood types developed as part of the Great Britain MOSAIC project. GB MOSAIC classifies all Great Britain households into 52 distinct ‘lifestyle types’ which comprehensively describe their socio-economic and socio-cultural behaviour. A MOSAIC type is assigned to each of the 1.6 million postcodes in Great Britain. The type assigned is the one that most closely describes the characteristics of those households and the individuals living there.

Methodology

A GB MOSAIC type is assigned to each household based upon a large number of statistical measures, originating from different sources and relating either to the individual person, their household, postcode, or other geographic unit such as Census Enumeration Districts or postal sectors. Each year, the data is refreshed (except Census data, which was gathered in 1991) and the GB MOSAIC type assigned to each postcode or household is re-evaluated and, in some instances, changed where the statistical characteristics have altered (for example, due to movements of people or new buildings). A detailed description of the clustering technique used to generate these household types is given in Appendix II.

Using the GB MOSAIC profiles, it was possible to construct variables which broadly correspond to indicators of rural poverty, as well the identification of ‘key stakeholders’ in terms of civic involvement and community regeneration. The following clusters (or household types) were identified as pertinent to the investigation of rural poverty in the West Cornish context:

- ❑ Low rise pensioners (D15)
- ❑ Low rise subsistence (D16)
- ❑ Peripheral poverty (D17)
- ❑ Rural disadvantage (K48)

The following clusters (or household types) were identified as pertinent to the identification of potential ‘social entrepreneurs’ in the west Cornish context:

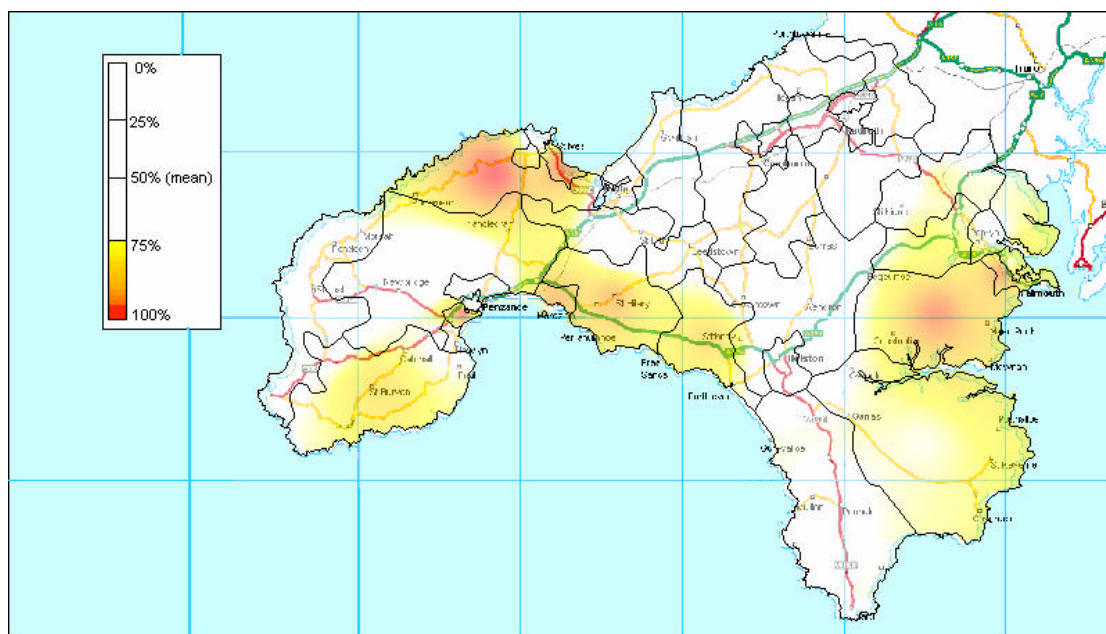
- ❑ Clever capitalists (A4)
- ❑ Ageing professionals (A5)
- ❑ Small town business (A6)
- ❑ Chattering classes (H36)
- ❑ High spending greys (I48)

Findings

The areas highlighted in Figures 2.26 and 2.27 represent the *upper quartile of the distribution* measuring the concentration of “social entrepreneurs” and “rural poor” respectively within each postal sector (ie. as a percentage of the total population). As Figure 2.26 shows, households defined as potential “social entrepreneurs” using the GB MOSAIC classification are concentrated in the coastal areas of Kerrier and Penwith – principally around St. Ives, in the south of the Land’s End peninsula, and in the west of the Lizard peninsula. Interestingly, comparing the distribution of these community “animateurs” with the geographical distribution of community organisation (see Figure 4.16) reveals an essentially *inverse* relationship – namely, those areas characterised by high levels of community organisation contain few households defined here as “social entrepreneurs”.

This pattern may reflect the low population densities of the areas containing high concentrations of “social entrepreneurs”. Community organisation tends to occur in populous areas – chiefly major towns – which act as nodes in the development of community networks due to their accessibility and physical infrastructure such as meeting halls and other venues. It is likely therefore that “social entrepreneurs” live outside these areas in more remote settlements and travel in to the main population centres. Alternatively the real “social entrepreneurs” in west Cornwall may not belong to any of these ‘middle-class’ professional groups, but may be largely composed of ‘poorer’ and/or younger social groups.

Figure 2.26: ‘Social Entrepreneurs’ in West Cornwall by Postcode Sector, 2000

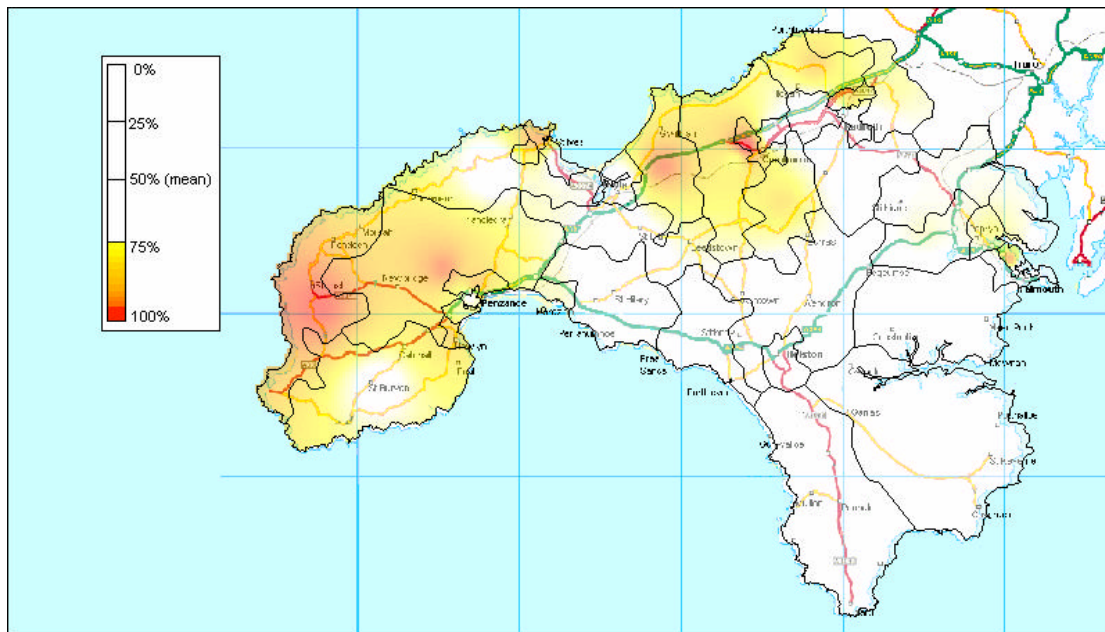


Source: GB MOSAIC © Experian

Households defined as “poor consumers” using the GB MOSAIC classification are concentrated largely in west Penwith (especially in the St. Just area), as well as in north Kerrier (principally in Camborne and Redruth), as Figure 2.27 (below) shows. Comparing the distribution of “poor consumers” with “social entrepreneurs” (Figure 2.26, above) again shows an inverse relationship such that in those areas with high concentrations of poverty as identified by GB MOSAIC “social entrepreneurs” are relatively scarce. This demonstrates the internal consistency of the GB MOSAIC classification.

However comparing the distribution of “poor consumers” with the geographical distribution of poverty using 1991 Census data (Figure 2.18) reveals the limitations of market research approach to social classification. There is some degree of consistency between the two approaches in the areas identified as containing large proportions of “poor” households. As Figure 2.27 reveals, in both approaches west Penwith figures prominently, as well as north Kerrier (especially Camborne and Redruth).

Figure 2.27: ‘Poor Consumers’ in West Cornwall by Postcode Sector, 2000



Source: GB MOSAIC © Experian

However, in contrast with the 1999 Census analyses, smaller predominantly rural settlements (eg. in the Lizard peninsula and in the Marazion area) are overlooked using a classification based upon GB MOSAIC. This inconsistency between Census based and GB MOSAIC based approaches is partly a result of the larger spatial scale of UK postal sectors in comparison with Enumeration Districts, which means that smaller pockets of deprivation within otherwise relatively affluent are often missed. However, it also reflects the different priorities of market research, which focus upon predicting consumer behaviour rather than upon the scientific measurement of poverty and social exclusion. These findings emphasise the fact that geo-demographic market researchers are primarily interested in the location of middle income and richer social groups, whereas social scientific research has often concentrated on mapping the distribution of poorer social groups.