

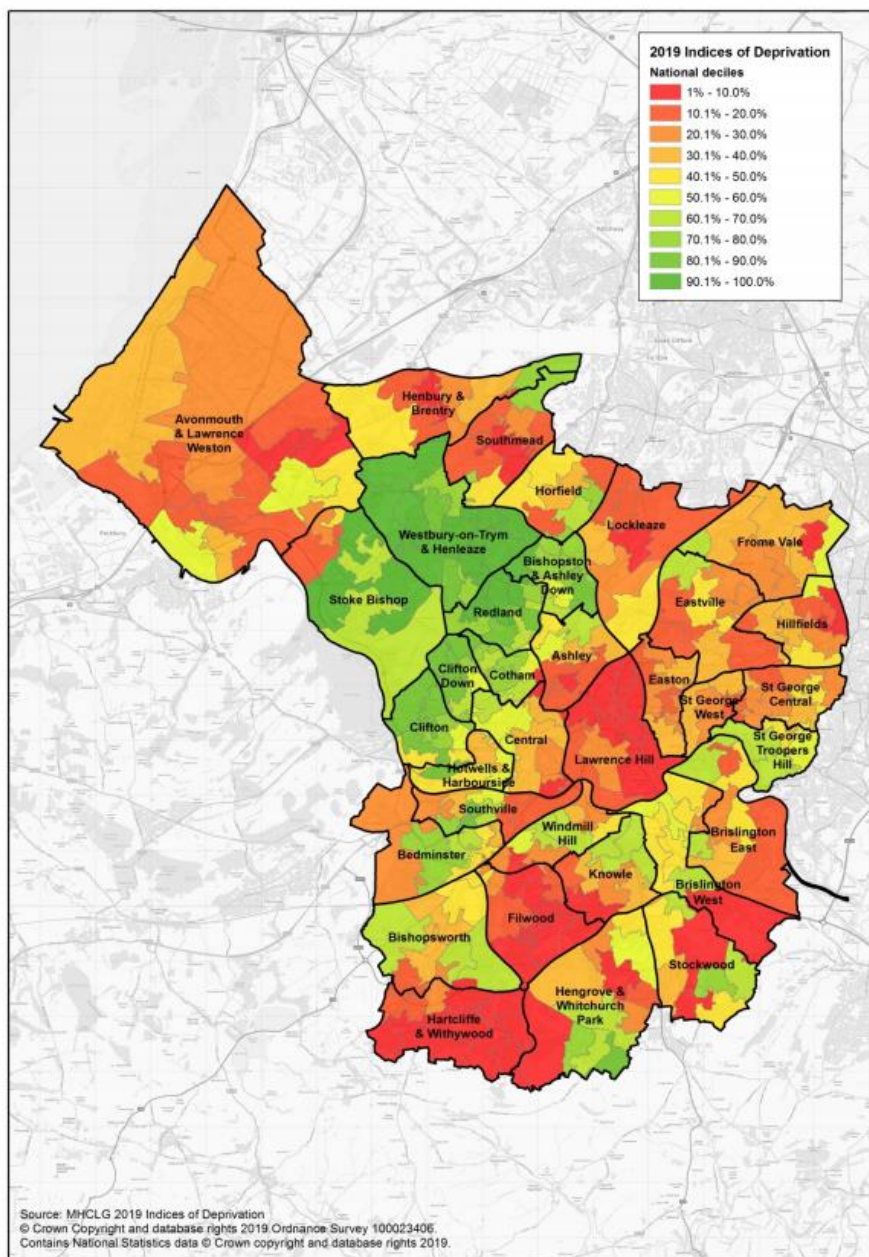
# Poverty Dimensions Webinar

## Opportunities in South Bristol



**Figure 1. 2019 National Deprivation Deciles by Lower Layer Super Output Area (LSOA)**

Source: Strategic Intelligence and Performance using MHCLG 2015 and 2019 Indices of Deprivation



- 15% of Bristol's residents, or around 70,000 people live in neighbourhoods that fall amongst the most deprived 10% in England
- Around 11,000 children in Bristol live in poverty, of which 65% are in working families
- In Bristol, the average life expectancy at birth for male is 83 years old in Clifton or Cotham but 73 in Knowle, Hartcliffe or Redcliffe
- The combination of low levels of education and therefore lower paying jobs mean that South Bristol represents an area with high levels of deprivation; low levels of satisfaction with either life or the area in which they live and the cost of living is difficult for many to manage.

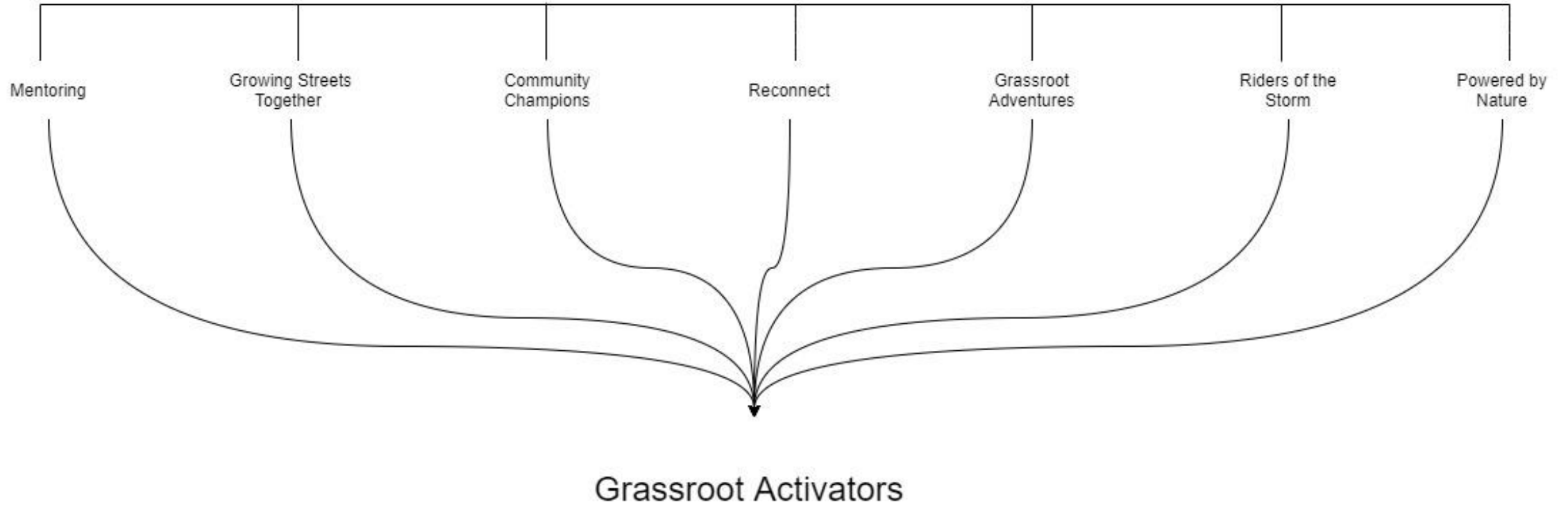
Lost services in Hartcliffe and Withywood



<https://www.facebook.com/watch/?v=727670204313073>



Grassroot Communities Project Models  
Delivered in identified schools or communities



The above project models, previous youth and community work projects and experiences inform much of the modules for the year long Grassroot Activators course in a version for schools / colleges and an access course for universities.

# Grassroot Activators Programme

## Course modules:

- Leadership
- Bushcraft and Nature Connection
- Social Action
- Mentoring
- Youth Work
- Developing Community Space Pt1 and Horticulture Pt2
- Entrepreneurism and Life Skills
- Work Experience

