

Office for
Students

The logo for the Office for Students, featuring a dark blue square with a yellow square in the top right corner containing the letters 'OfS' in white.

OfS

TUNDRA

Tracking Underrepresentation by Area

Catherine Barnaby / Norra Tengcharoensuk
Senior Analyst / Analyst

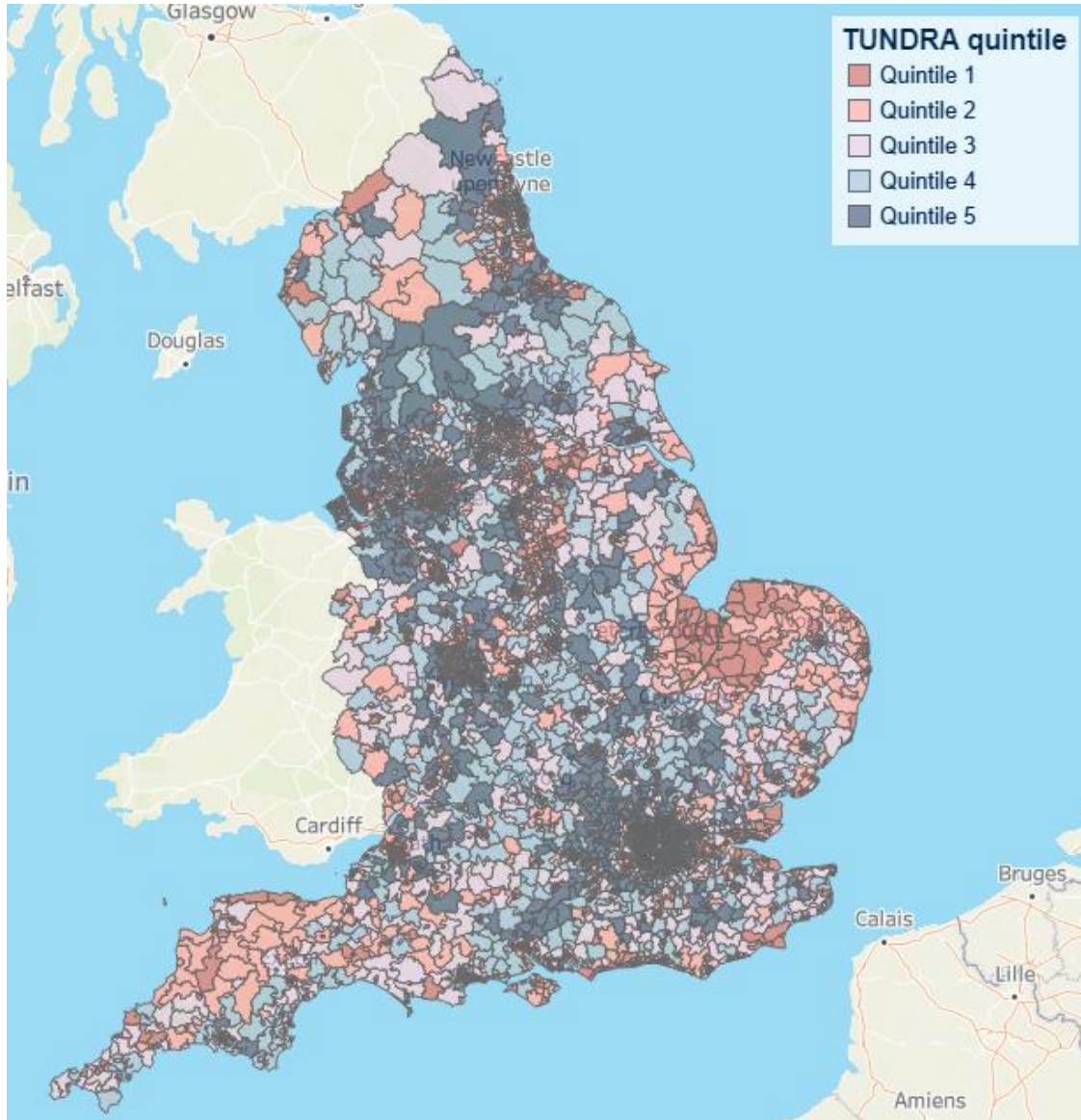
NPD User group
July 2021

Follow us on Twitter at
[@officestudents](https://twitter.com/officestudents)

What is TUNDRA?

An **area-based** classification which uses **tracking** of pupils from **state-funded mainstream schools in England** to calculate **young participation**.





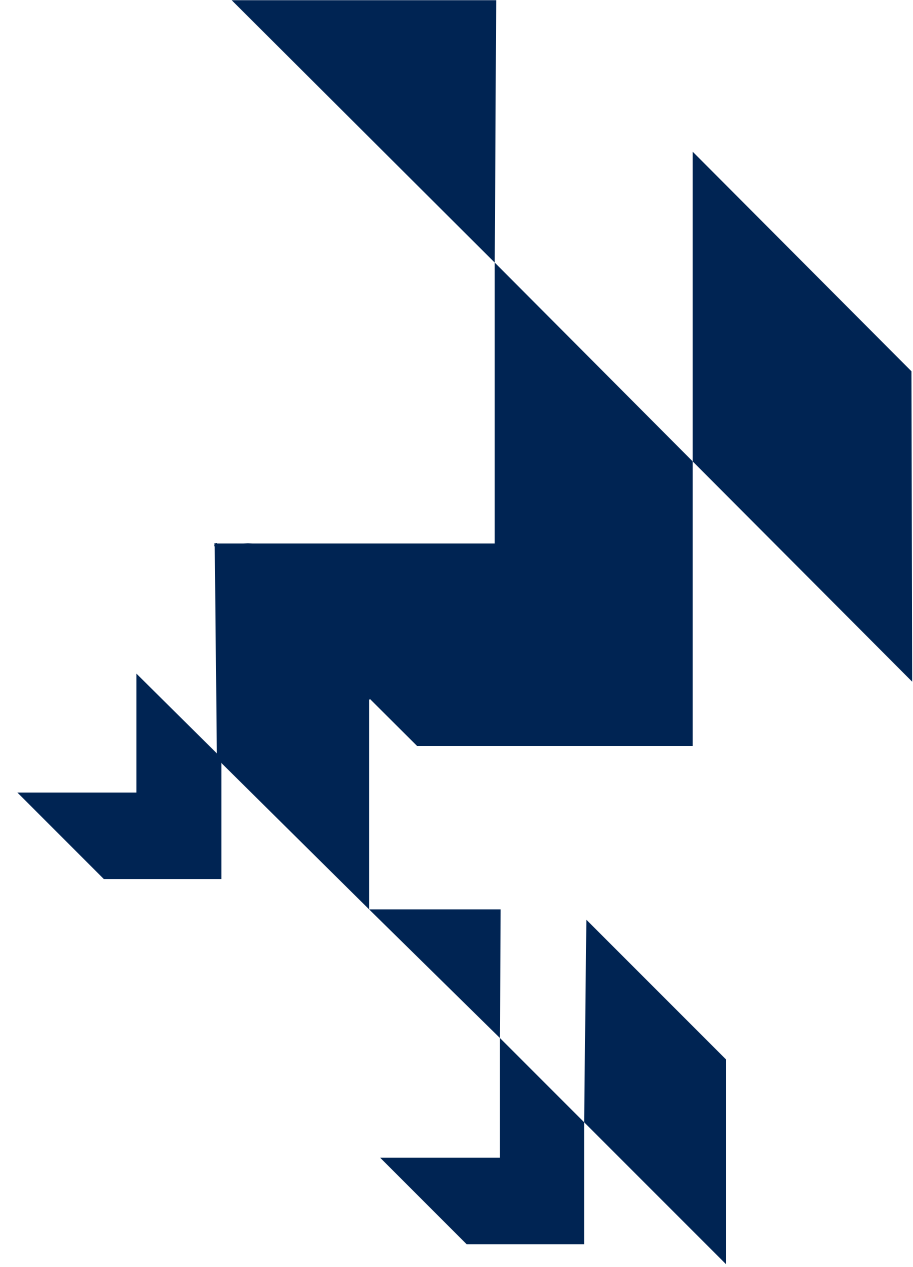
Key features

- Local areas in England classified into five equal groups (quintiles) based on young participation rates
- Quintile 1 – lowest participation
- Quintile 5 – highest participation
- This means young participation rates for different areas across England can be compared with each other, but it does not identify individuals' likelihood of participating in higher education

Some Choices

Why only students in state-funded mainstream schools?

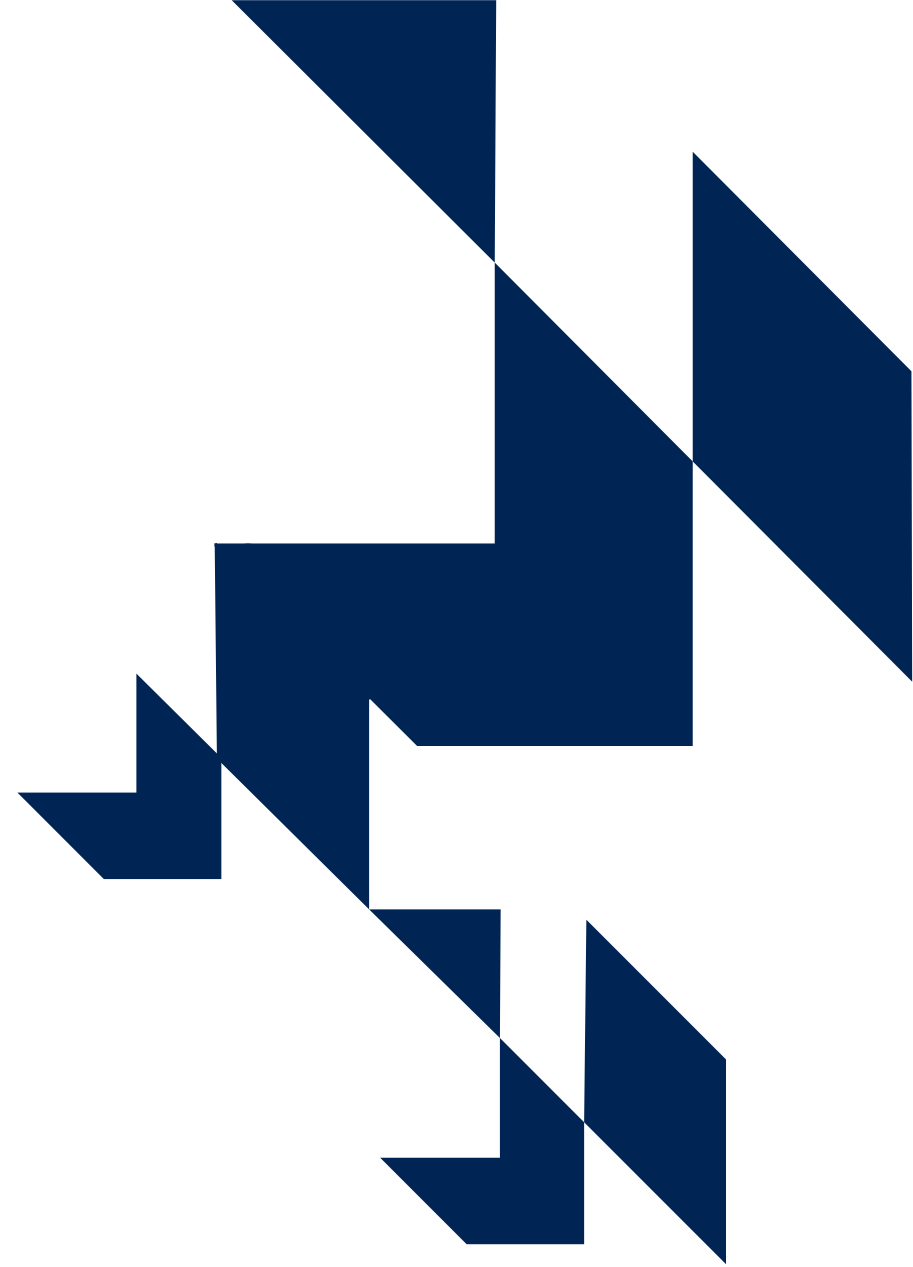
- State-funded intervention programmes typically target students in state-funded schools;
- Special schools, PRUs etc. are different - have wider catchments, low *young* participation, students get lost in an overall classification ;
- Uses the same definition as DfE - easier to “tell a story” by combining data;



Some Choices (2)

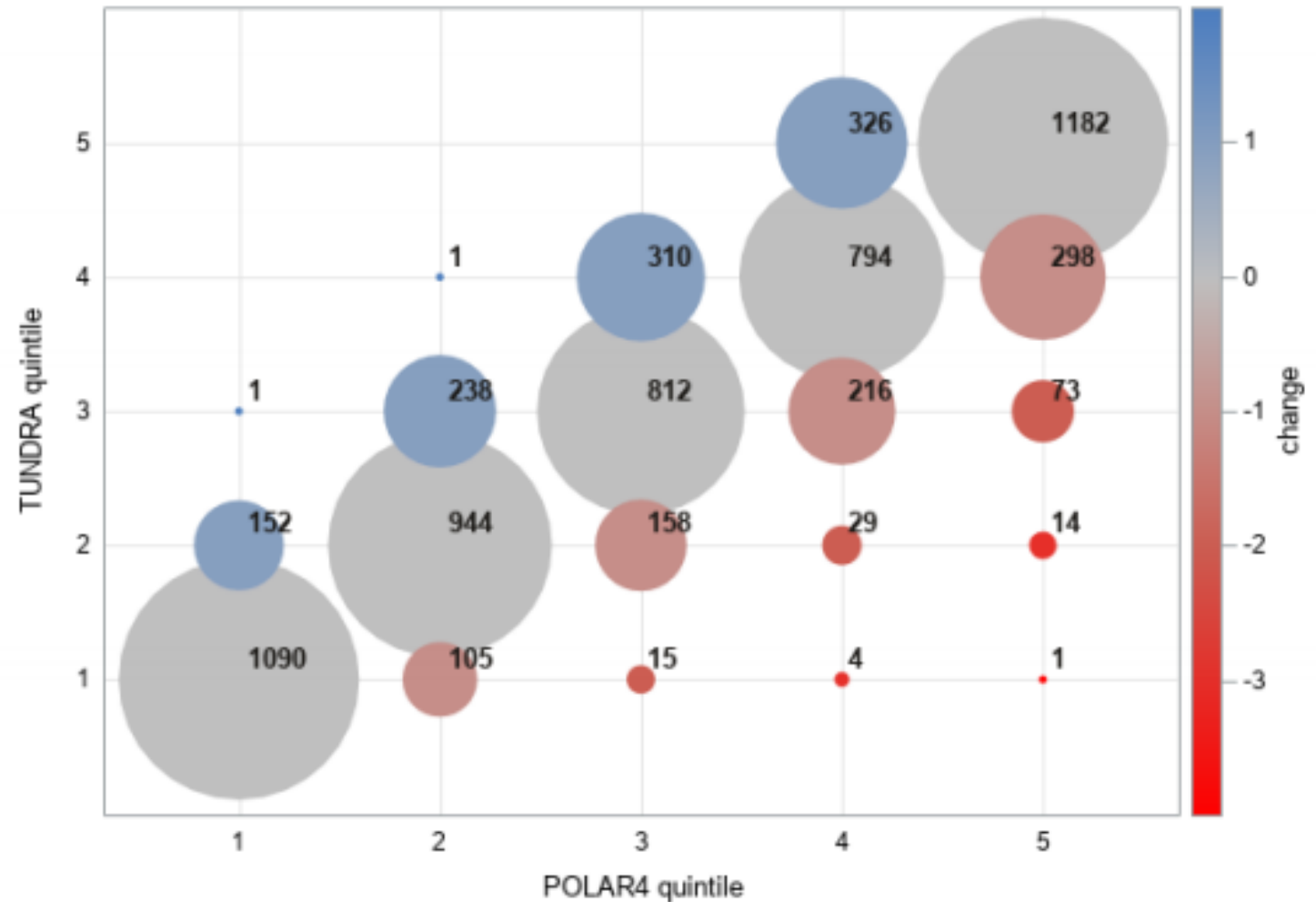
How small can the areas be?

- Random fluctuations noticeable in small populations, but suppressing data makes the classification less usable;
- MSOAs – suppress if less than 50 population. Stable, slow-moving;
- LSOAs - suppress if less than 30 population (more volatile, needs updating regularly);
- Combine 5 years of data – like a moving average.

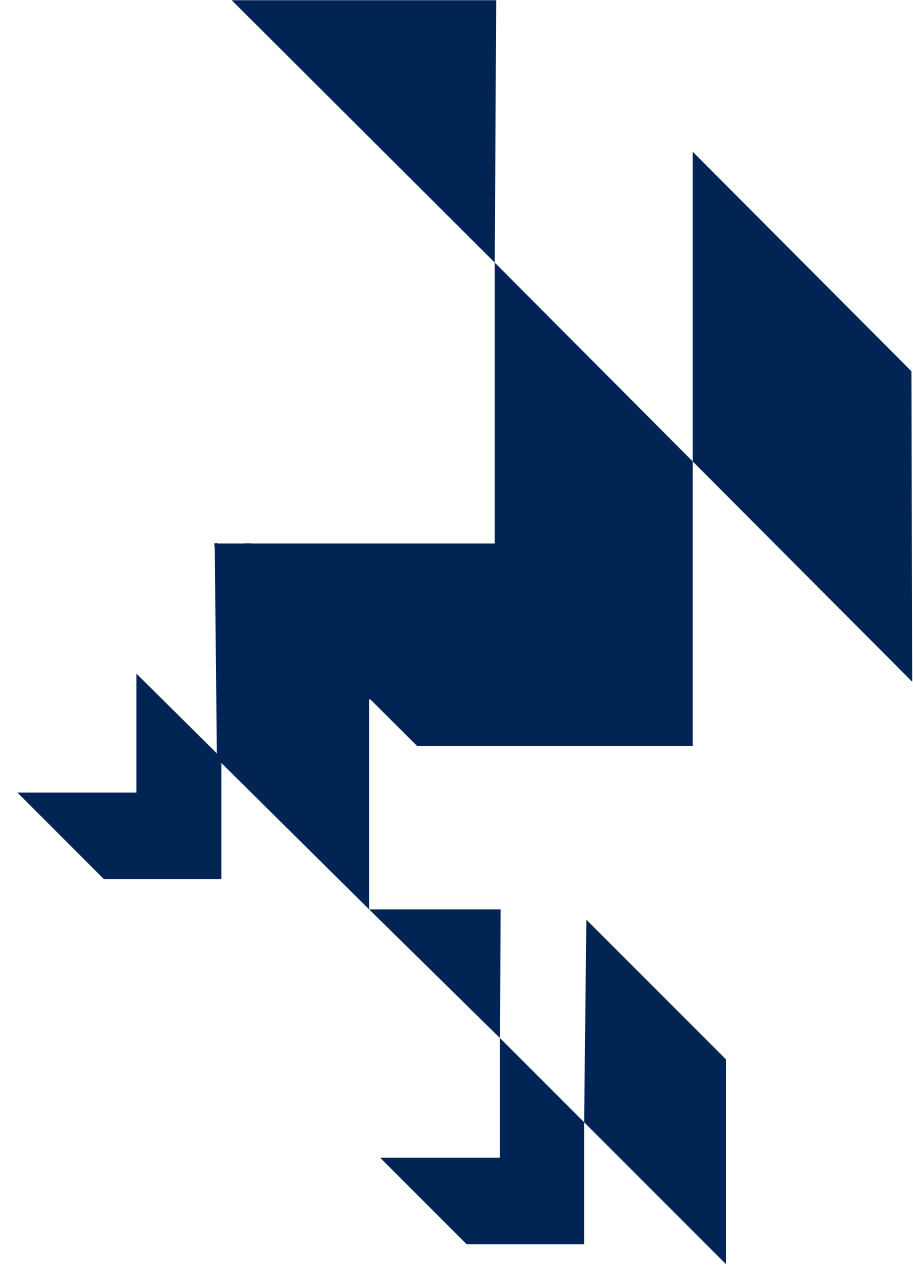


Uses and difference from POLAR4

- Outreach and identifying areas of low young participation
- POLAR4 will no longer be updated (but we will continue to publish postcodes added/removed)
- TUNDRA can be used with POLAR4 but does not replace it as it is a different measure



**How is TUNDRA
calculated?**



Population, Data Source, and Tracking

Denominator

- Individualised data from National Pupil Database (NPD)
- Cohorts of key stage 4 pupils (aged 16) in 2012-2016
- State-funded mainstream school in England
- Home postcode in England
- On the national roll



Numerator

- University data from Higher education statistics agency (HESA) and HESA Alternative Provider (HESA AP) student records
- College data from the individualised learner record (ILR)
- If these students were found 2-3 years later (aged 18-19) then they are HE participants

Participation Rates and Quintiles for each area

- The number of young participants is divided by the number of total KS4 pupils (who fit the criteria) in each local area in England to obtain the young participation rate
- Each local area is defined by a statistical geography where boundaries were created in a way that means each area contains similar characteristics
 - MSOA (Middle-layer Super Output Area)
 - LSOA (Lower-layer Super Output Area)
- The areas are ranked in order of their young participation rate, from lowest to highest, and segregated into approximately equal quintiles (in terms of population)

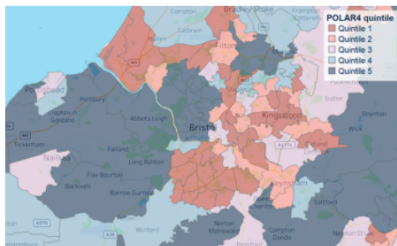
Visualisation

- <https://www.officeforstudents.org.uk/data-and-analysis/young-participation-by-area/>



Search by postcode

Search for levels of young participation by postcode



Interactive maps

See how likely young people are to participate in higher education according to where they live

Visualisation (Postcode look-up)

- <https://www.officeforstudents.org.uk/data-and-analysis/young-participation-by-area/>

Area-based measures postcode look-up

This tool can be used to find the area-based measure quintiles associated with a postcode.

Please note, quintiles are applied to areas and then all the postcodes within those areas are assigned that quintile. Quintiles are not specific to streets, buildings or postcodes.

ofs

Search postcode (Type a postcode in the search box and press 'enter')

BS34 8SR

Your POLAR4 quintile

The postcode you have searched for is in a POLAR4 **Quintile 5** area

POLAR4 assigns a quintile to an area based on how many 18-year-olds from that area started a higher education course between 2009-10 and 2013-14:

- quintile one shows the lowest rates of participation
- quintile five shows the highest rates.

Quintile not displayed or 'Removed'? Click 'View detailed results' to find out why.

See detailed results for this postcode

Click the button below to see the detailed results for your postcode, including quintiles for our other area-based measures:

- TUNDRA MSOA
- POLAR3
- TUNDRA LSOA
- Gaps GCSE
- Adult HE 2011
- Gaps GCSE Ethnicity.

You will also see the location of the postcode within the area used to calculate the quintile.

[View detailed results](#)

Area-based measure postcode look-up

You searched: **BS34 8SR**

[Want to search another postcode? Click here](#)

ofs

This postcode is in an area called: Frenchay and Great Stoke (MSOA E02003106)

This postcode is found in areas that have been assigned the following quintiles (hover over for more info):

POLAR4	Quintile 5	POLAR3	Quintile 3
TUNDRA MSOA	Quintile 3	Gaps GCSE	Quintile 1
TUNDRA LSOA	Quintile 2	Gaps GCSE Ethnicity	Quintile 1
Adult HE 2011	Quintile 4		

[Is this postcode in a Uni Connect target area? No](#)

[Quintile showing as 'Removed' or 'NA'? Click here to find out why](#)

See the area on a map

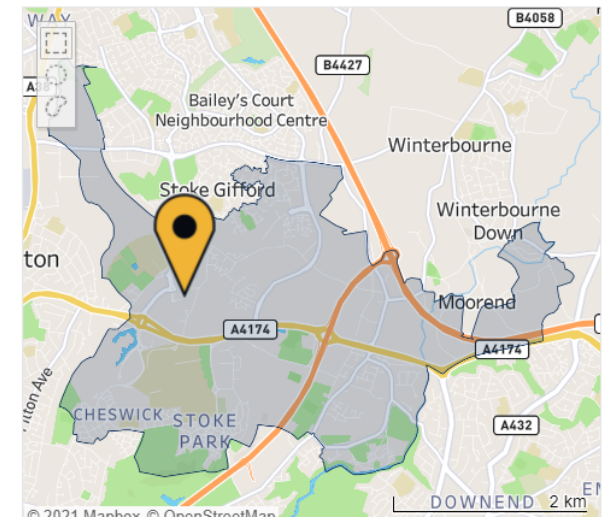
Below you can select a measure to see the area used to calculate the quintile for your postcode. Measures that use the same geographic areas are grouped.

Select measure:

- POLAR4/TUNDRA MSOA/Adult HE 2011
- TUNDRA LSOA
- POLAR3/Gaps

Type of area used: (hover over for more info) **MSOAs/IZs/SOAs**

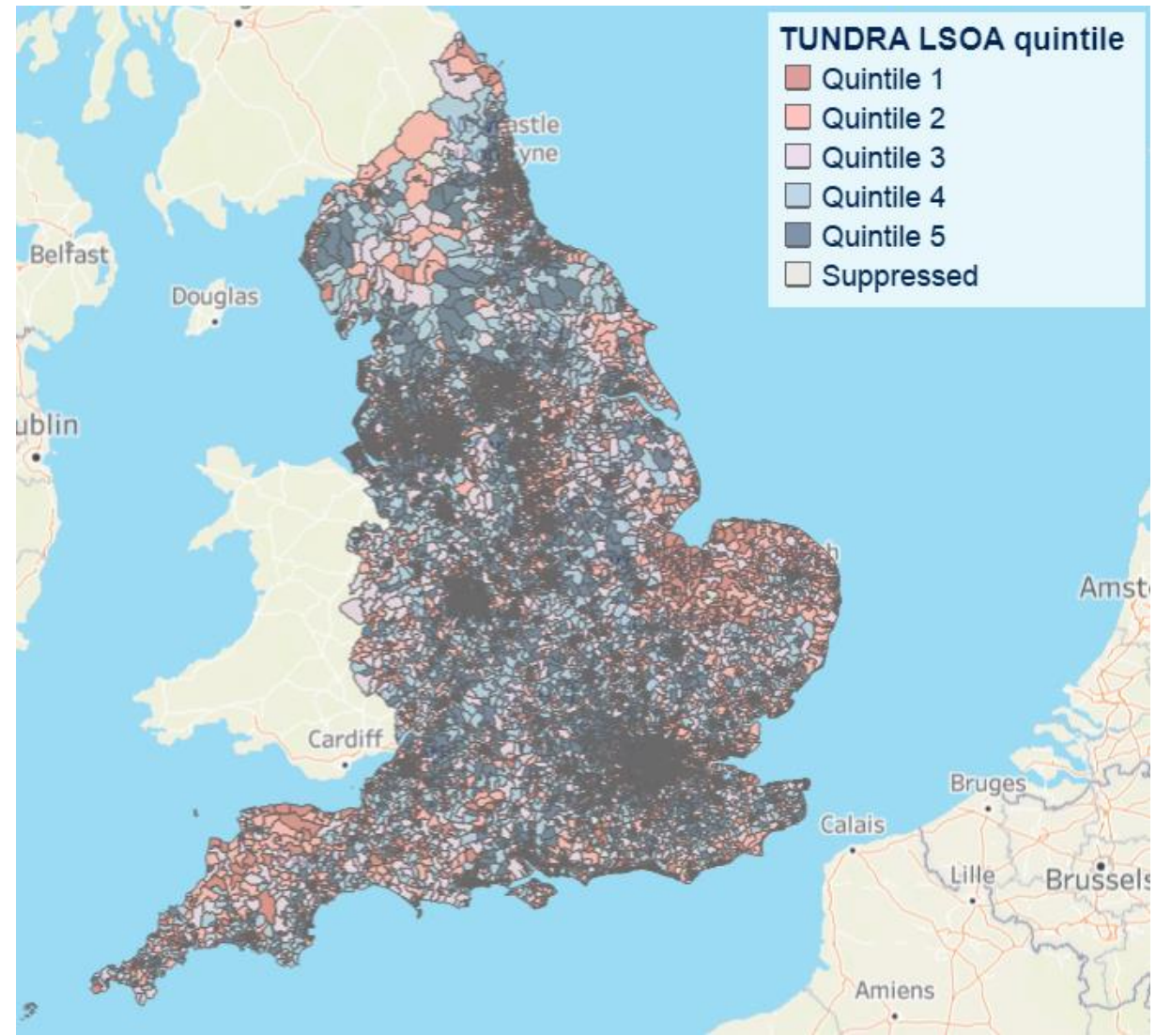
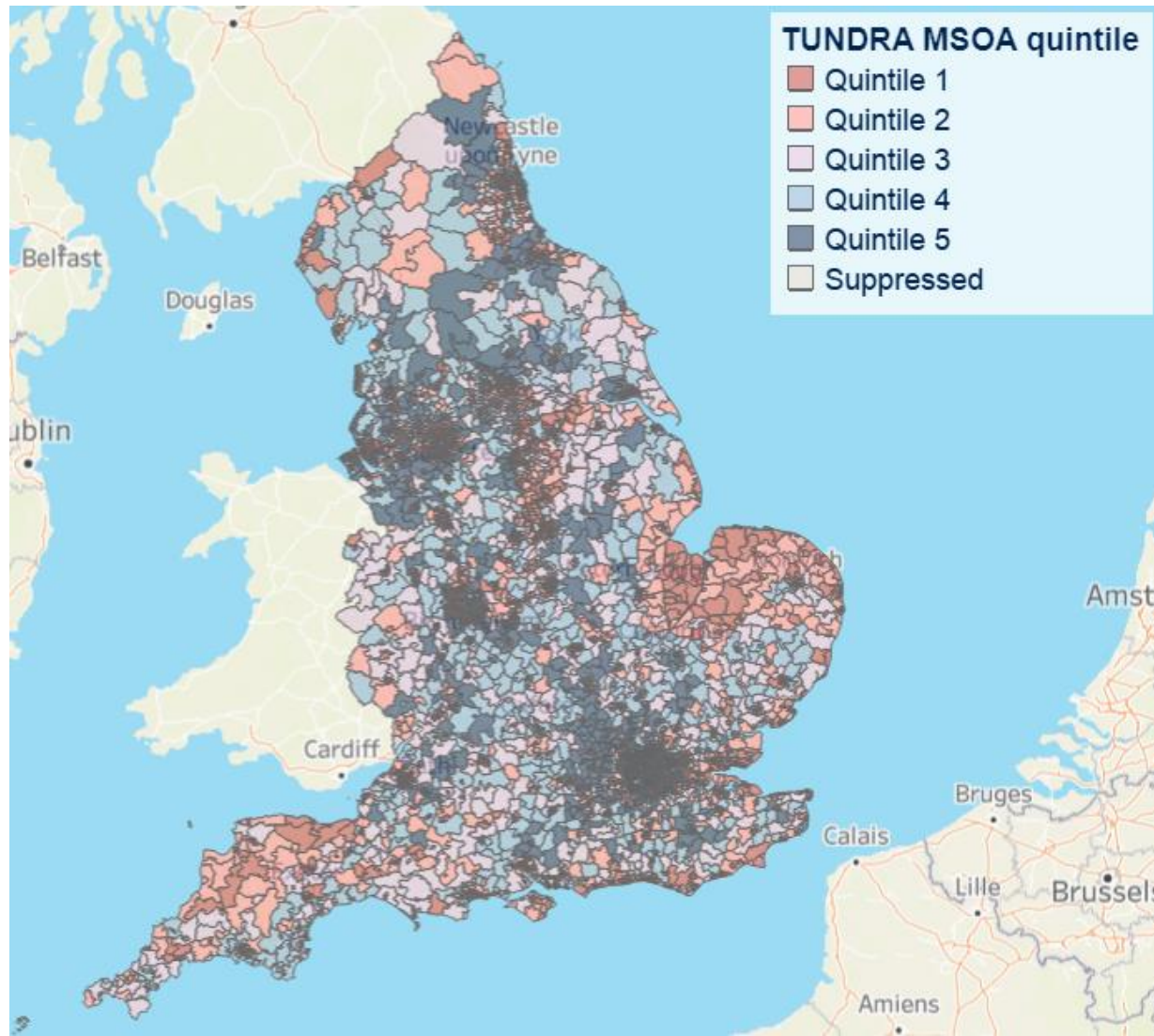
The map shows the postcode with a pin (not available in Northern Ireland) and the area in which it lies. The area outlined is the one used to calculate the measure selected above.



ofs

Visualisation (Maps)

- <https://www.officeforstudents.org.uk/data-and-analysis/young-participation-by-area/>

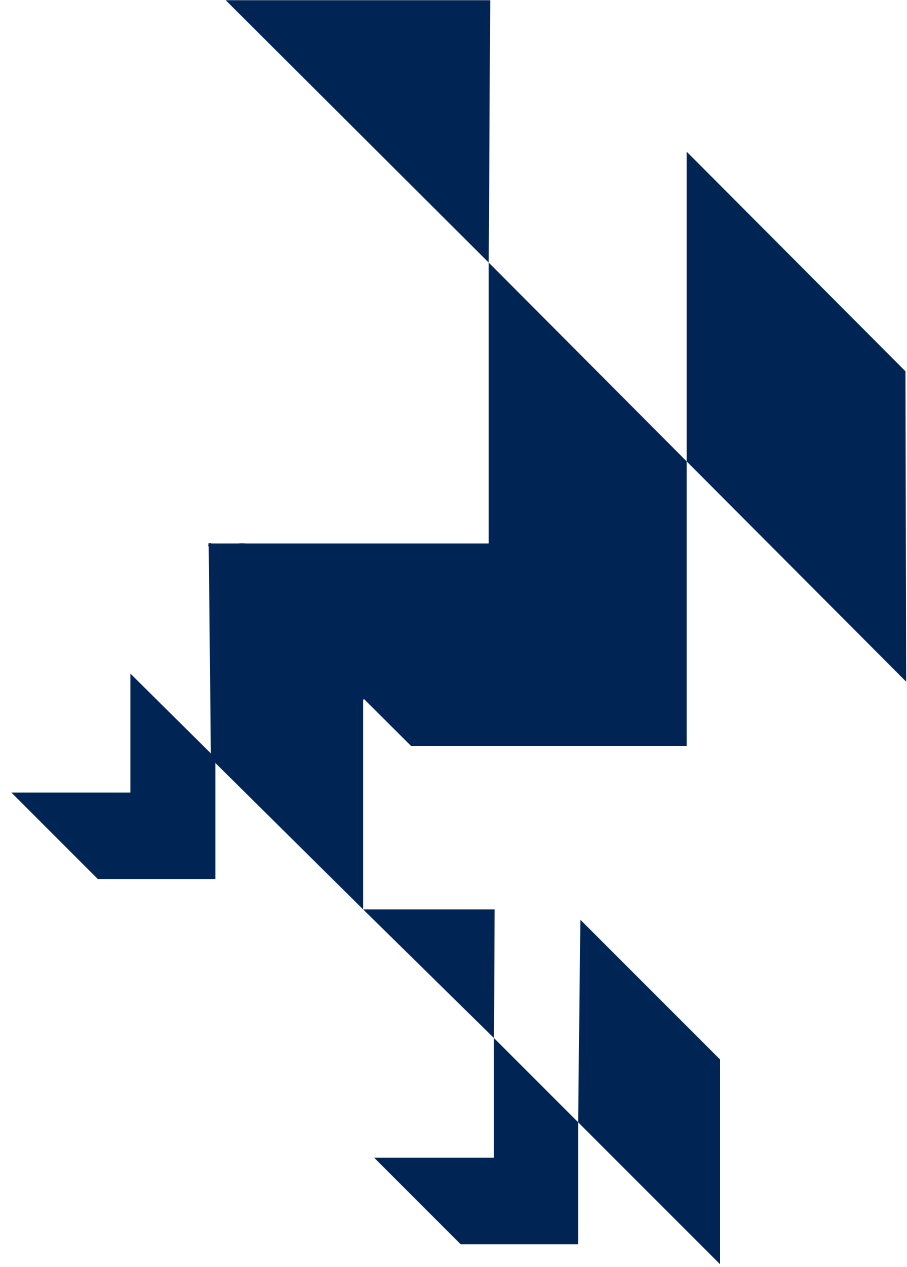


Other measures we are looking into

- Consulted on new approach to Uni Connect during Dec 2020 and Jan 2021 for approach to be used during 2021-22 to 2024-25
- Uni Connect is an outreach programme
- One of the results from this is that we will look into a school based measure instead of area based
- Hoping for more practical targeting and outreach

Any Questions?

Ask us now or contact us at
official.statistics@officeforstudents.org.uk



Office for
Students

The logo for the Office for Students, featuring a dark blue square with a yellow square in the top right corner containing the letters 'OfS' in white.

OfS

Thank you for listening

Copyright ©

The copyright in this presentation is held either by the Office for Students (OfS) or by the originating authors. Please contact info@officeforstudents.org.uk for further information and re-use requests.