



## Flow diagram to show options for the progression and completion of students on taught modular programmes

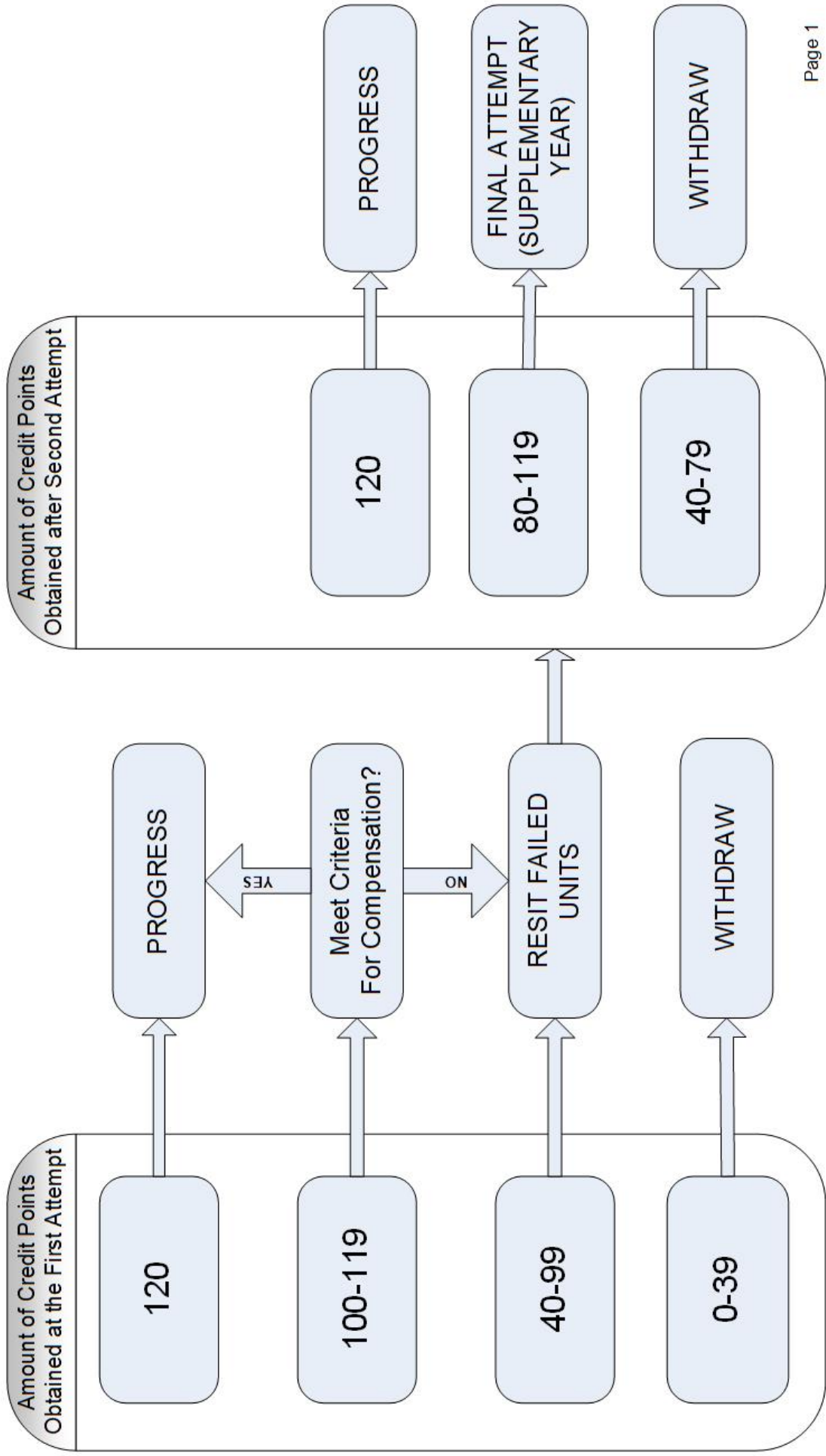
*These flow diagrams are for illustrative purposes only and must be read in conjunction with the relevant regulations that are set out in this Code.*

*The flow diagrams for progression and completion in an undergraduate modular programme represents a typical Honours Bachelors or Integrated Masters programme; they do not therefore reflect programme-specific regulations with regard to must-pass units and conditional progression.*

### Notes:

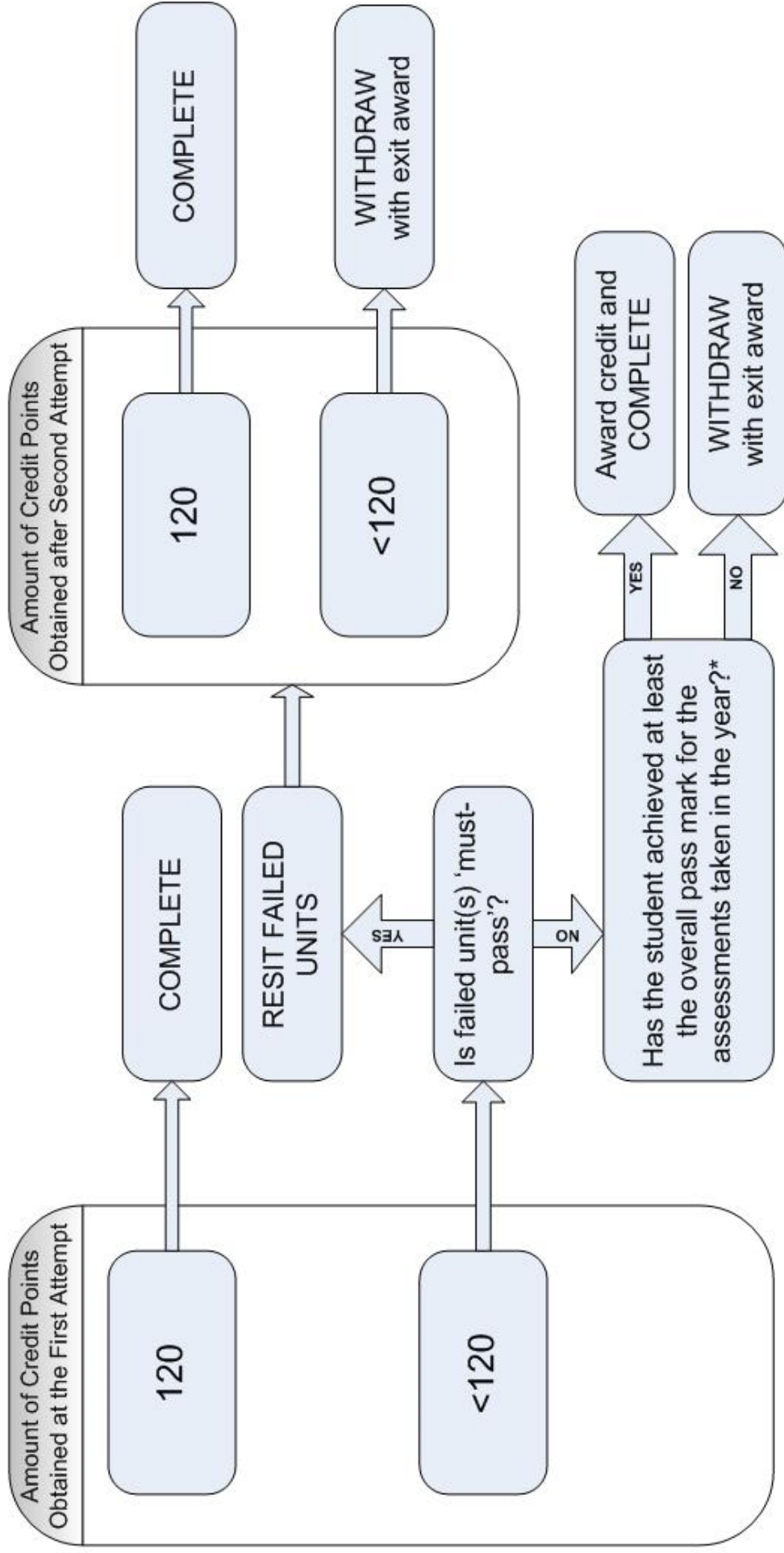
- *Students newly registered on programmes owned by the Faculty of Engineering from 2022/23 will be subject to different rules on compensation for the purposes of progression or completion of the programme, as set out in section 30 of the Taught Code.*
- *The flow diagram for taught postgraduate programmes represents a typical Masters programme where the taught component is 120 and the dissertation 60 credit points. The flow diagrams do not therefore represent the MRes or MSc in Social Work.*

## Flow Diagram for Student Progression in Undergraduate Modular Programmes



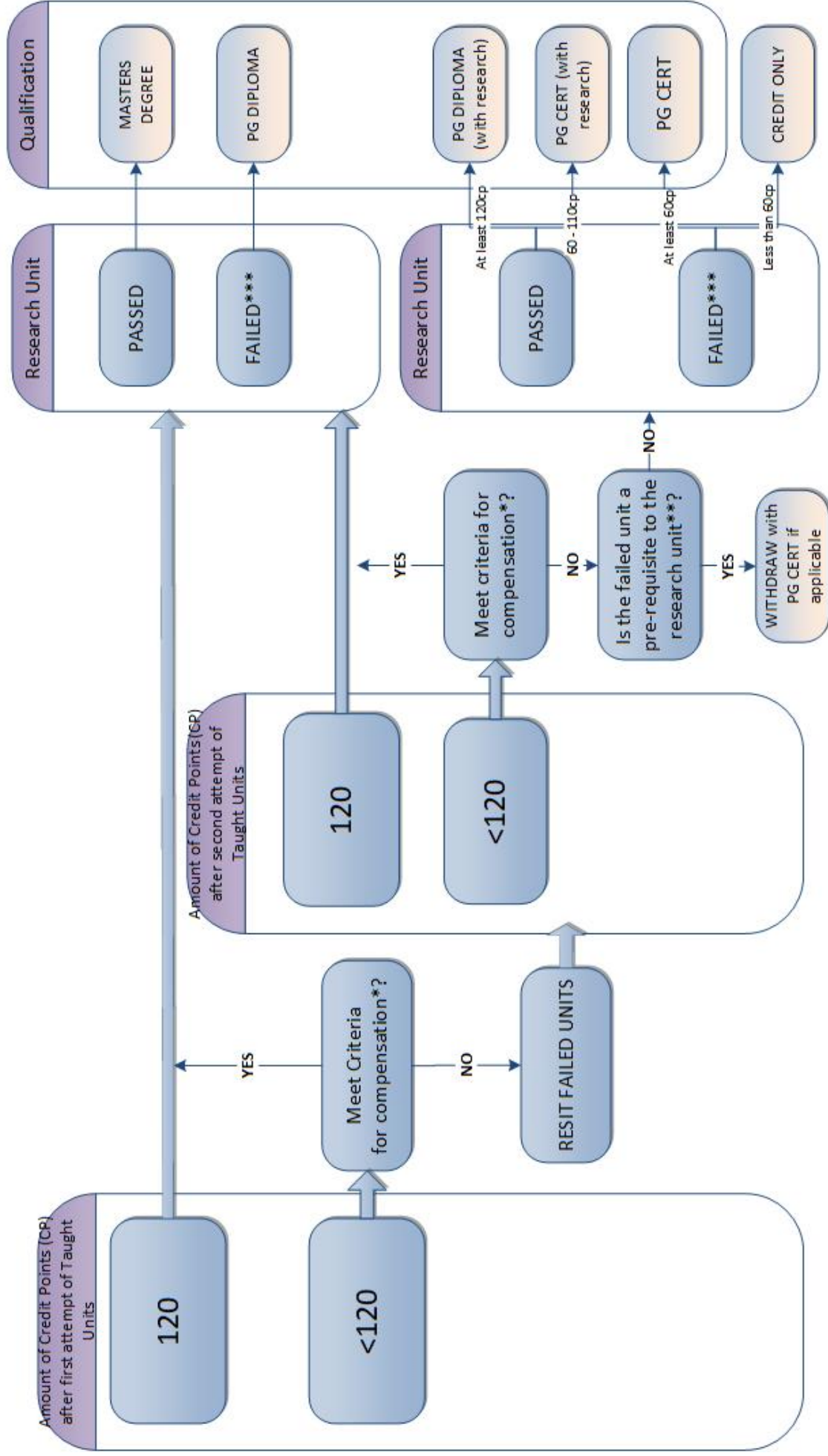
# Flow Diagram for Completion in the Final Year of Study in Undergraduate Modular Programmes

For newly registered students starting in and after 2011/12



\* a Faculty Board of Examiners can treat the final year of study as an overall block of 120 credit points for the purpose of awarding a qualification

## Flow Diagram for Taught Postgraduate Programmes (2024/25)



\* A programme may apply compensation at either the first or the second attempt.

\*\* Some programme may require a student to pass a taught unit as a condition to entry onto the research unit. This will be stated in the relevant programme specification where applicable.

\*\*\* Where a student has achieved a near-pass mark (between 45-49 out of 100) for the research unit, they will be permitted to re-submit the dissertation for a capped mark as a second attempt.